

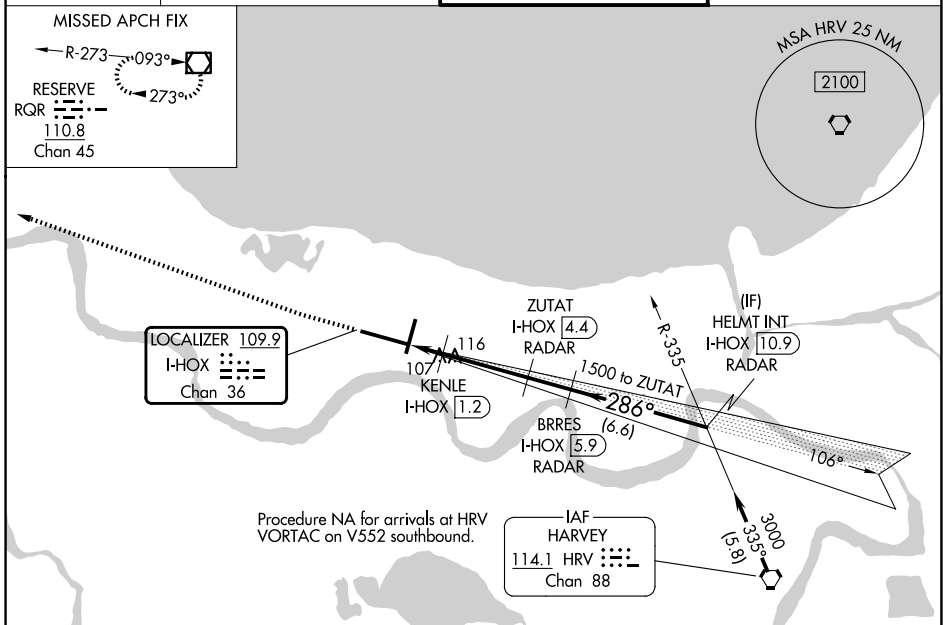
LOC/DME I-HOX 109.9 Chan 36	APP CRS 286°	Rwy Ldg 9800 TDZE 2 Apt Elev 3
-------------------------------------------------	------------------------	-----------------------------------------------------------

ILS or LOC RWY 29

LOUIS ARMSTRONG NEW ORLEANS INTL (MSY)

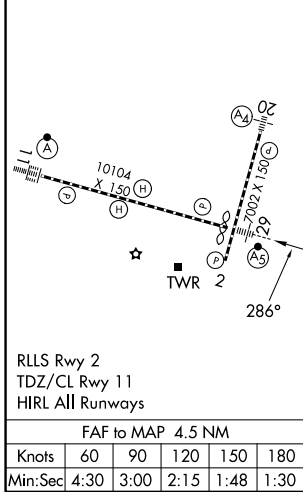
DME or RADAR required.	MALSR 	MISSED APPROACH: Climb to 600 then climbing right turn to 3000 direct RQR VOR/DME and hold.
▼ For inop ALS, increase S-LOC 29 Cat C/D visibility to 1 3/8 SM and increase KENLE Fix Minimums S-LOC 29 Cat C/D visibility to RVR 5500. * RVR 1800 authorized with use of FD or AP or HUD to DA.		

D-ATIS 127.55	NEW ORLEANS APP CON 125.5 350.35 (W) 133.15 290.3 (E)	NEW ORLEANS TOWER 119.5 254.3	GND CON 121.9 273.525
-------------------------	---------------------------------------------------------------------------	-----------------------------------------	---------------------------------



Procedure NA for arrivals at HRV VORTAC on V552 southbound.

ELEV 3	D	TDZE 2	600	3000	RQR	VGSI and ILS glidepath not coincident (VGSI Angle 3.00/TCH 68).
---------------	----------	---------------	-----	------	-----	-----------------------------------------------------------------



HELMT INT I-HOX 10.9 RADAR	BRRES I-HOX 5.9 RADAR	ZUTAT I-HOX 4.4 RADAR	KENLE I-HOX 1.2	I-HOX DME ANTENNA I-HOX 0.2
3000	2000	1500	480	
5 NM	1.6 NM	3.1 NM	1.4 NM	
C	B	A		
CATEGORY				
S-ILS 29*				
202/24 200 (200-1/2)				
S-LOC 29				
480/24 478 (500-1/2) 480/50 478 (500-1)				
CIRCLING				
520-1 517 (600-1) 540-1 537 (600-1) 580-1 1/2 577 (600-1 1/2) 580-2 577 (600-2)				
KENLE FIX MINIMUMS				
S-LOC 29				
360/24 358 (400-1/2) 360/30 358 (400-3/8)				
CIRCLING				
520-1 517 (600-1) 540-1 537 (600-1) 580-1 1/2 577 (600-1 1/2) 580-2 577 (600-2)				

SC-4, 16 APR 2026 to 14 MAY 2026

SC-4, 16 APR 2026 to 14 MAY 2026