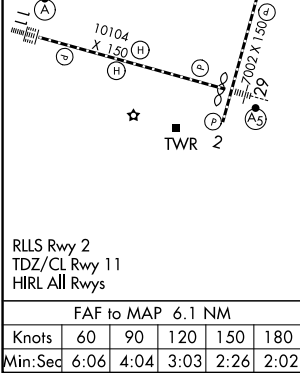
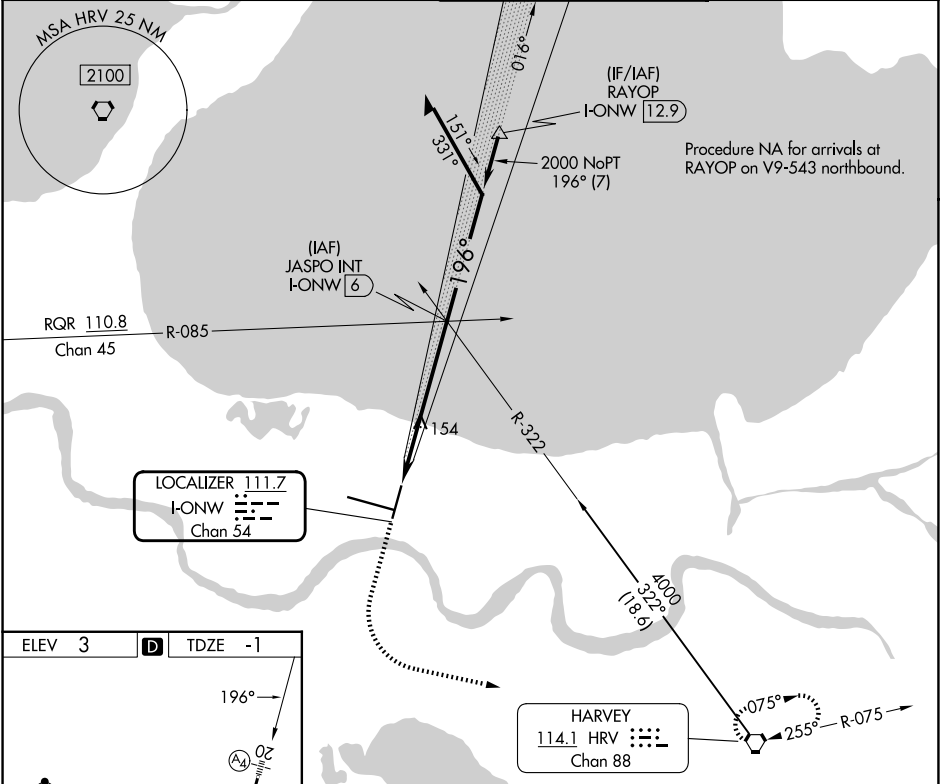


LOC/DME I-ONW <b>111.7</b> Chan <b>54</b>	APP CRS <b>196°</b>	Rwy Ldg <b>6948</b> TDZE <b>-1</b> Apt Elev <b>3</b>
---	------------------------	--

# LOC RWY 20

LOUIS ARMSTRONG NEW ORLEANS INTL (MSY)

Rwy 20 helicopter visibility reduction below RVR 4000 NA.		MALS 	MISSED APPROACH: Climb to 1300 then climbing left turn to 2100 direct HRV VORTAC and hold.
D-ATIS <b>127.55</b>	NEW ORLEANS APP CON <b>125.5 350.35 (W)</b> <b>133.15 290.3 (E)</b>	NEW ORLEANS TOWER <b>119.5 254.3</b>	GND CON <b>121.9 273.525</b>



ELEV 3	TDZE -1	1300 2100 HRV		JASPO INT I-ONW 6 Remain within 10 NM	
I-ONW DME ANTENNA I-ONW 0.2    I-ONW 1		016° 196° 4000 2000 ≤ 3.00° TCH 52			
CATEGORY S-20		A	B	C	D
CIRCLING		420/40 517 (600-1)	421 (500-¾) 540-1 537 (600-1)	420/50 580-1½ 577 (600-1½)	421 (500-1) 580-2 577 (600-2)

SC-4, 16 APR 2026 to 14 MAY 2026

SC-4, 16 APR 2026 to 14 MAY 2026