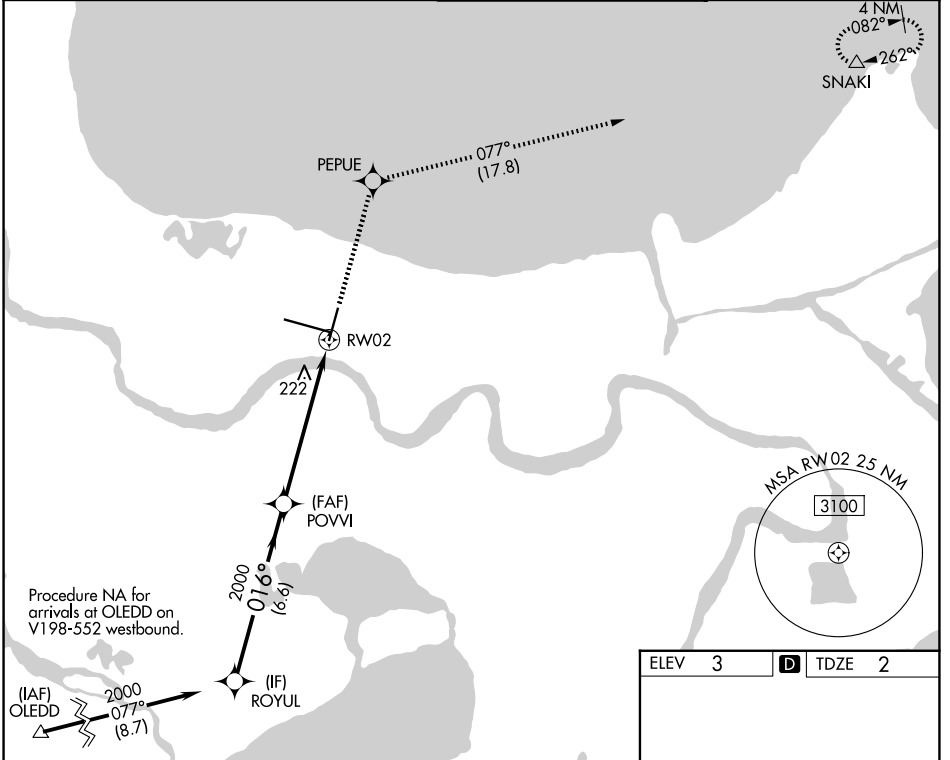


WAAS CH <b>49220</b> <b>W02A</b>	APP CRS <b>016°</b>	Rwy Ldg <b>7002</b> TDZE <b>2</b> Apt Elev <b>3</b>
--	------------------------	---

# RNAV (GPS) RWY 2

LOUIS ARMSTRONG NEW ORLEANS INTL (MSY)

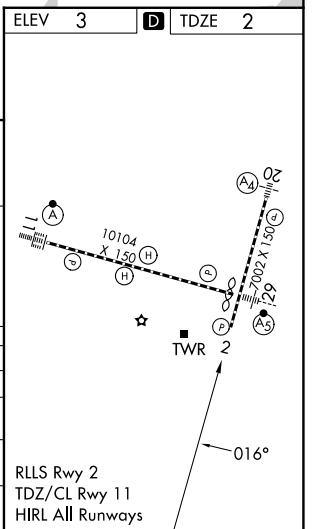
RNP APCH - GPS		MISSED APPROACH: Climb to 3000 direct PEPUE and on track 077° to SNAKI and hold.	
▼ Rwy 2 helicopter visibility reduction below RVR 4000 NA. For uncompensated Baro-VNAV systems, LNAV/VNAV NA below 0°C or above 54°C.			
D-ATIS <b>127.55</b>	NEW ORLEANS APP CON <b>125.5 350.35</b> <b>133.15 290.3</b> (E)	NEW ORLEANS TOWER <b>119.5 254.3</b>	GND CON <b>121.9 273.525</b>



VGSI and RNAV glidepath not coincident (VGSI Angle 3.00/TCH 52).

ROYUL	POVVI	PEPUE	SNAKI
2000	2000	3000	
GP 3.00° TCH 56		tr 077°	
6.6 NM	4.8 NM	1.3 NM	
016°			
1.3 NM to RW02			

CATEGORY	A	B	C	D
LPV DA		398/60	396 (400-1¼)	
LNAV/VNAV DA		379/55	377 (400-1)	
LNAV MDA	480/55	478 (500-1)	480-1¾ 478 (500-1¾)	
CIRCLING	520-1 517 (600-1)	540-1 537 (600-1)	580-1½ 577 (600-½)	580-2 577 (600-2)



SC-4, 16 APR 2026 to 14 MAY 2026

SC-4, 16 APR 2026 to 14 MAY 2026