

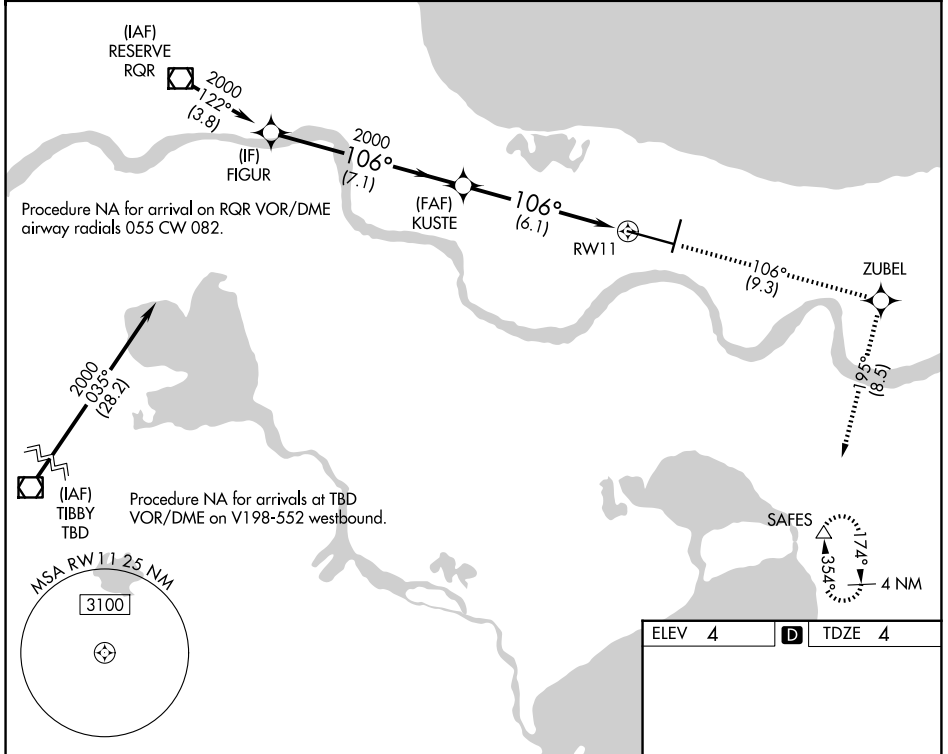
RNAV (RNP) Z RWY 11

LOUIS ARMSTRONG NEW ORLEANS INTL (MSY)

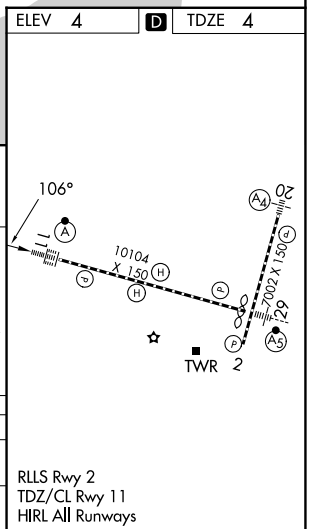
APP CRS 106°	Rwy Ldg TDZE Apt Elev	9800 4 4
------------------------	-----------------------------	-------------------------------------

RNP AR APCH - GPS.	ALSF-2 	MISSED APPROACH: Climb to 2000 on track 106° to ZUBEL and on track 195° to SAFES and hold.
For uncompensated Baro-VNAV systems, procedure NA below -1°C or above 54°C. For inop ALS, increase RNP 0.30 all Cats visibility to RVR 5500.		

D-ATIS 127.55	NEW ORLEANS APP CON 125.5 350.35 133.15 290.3 (W) (E)	NEW ORLEANS TOWER 119.5 254.3	GND CON 121.9 273.525
-------------------------	---	---	---------------------------------



VGSI and RNAV glidepath not coincident (VGSI Angle 2.80/TCH 73).	2000	↑	tr 106°	ZUBEL	↑	tr 195°	SAFES	△
FIGUR	KUSTE	RWY 11						
2000	2000	2000						
GP 3.00°								
TCH 55								
	7.1 NM		6.1 NM					
CATEGORY	A	B	C	D				
RNP 0.30 DA	367/35		363 (400-5/8)					
AUTHORIZATION REQUIRED								



SC-4, 16 APR 2026 to 14 MAY 2026

SC-4, 16 APR 2026 to 14 MAY 2026