

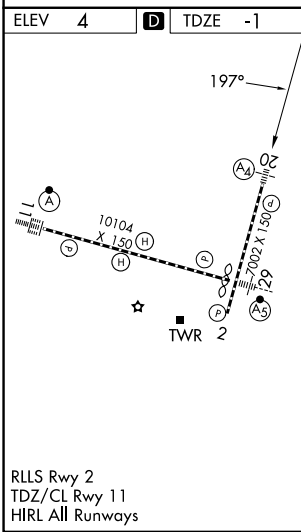
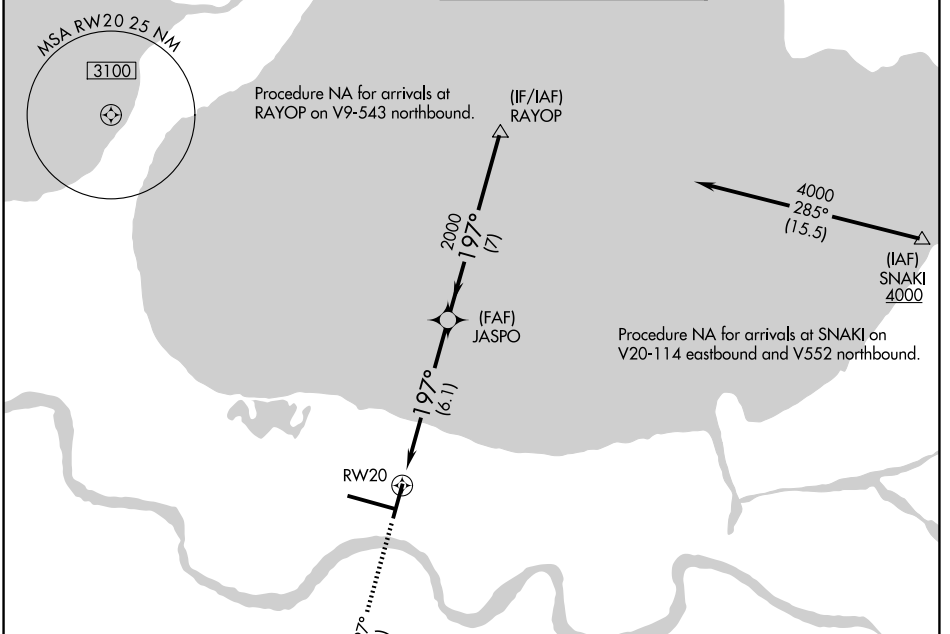
APP CRS 197°	Rwy Ldg 6948
	TDZE -1
	Apt Elev 4

RNAV (RNP) Z RWY 20

LOUIS ARMSTRONG NEW ORLEANS INTL (MSY)

RNP AR APCH - GPS.	MALS 	MISSED APPROACH: Climb to 2000 on track 197° to POLIY and track 109° to SAFES and hold.
For uncompensated Baro-VNAV systems, procedure NA below -1°C or above 54°C. For inop ALS, increase RNP 0.30 all Cats visibility to RVR 6000.		

D-ATIS 127.55	NEW ORLEANS APP CON 125.5 350.35 (W) 133.15 290.3 (E)	NEW ORLEANS TOWER 119.5 254.3	GND CON 121.9 273.525
-------------------------	---	---	---------------------------------



MISSED APCH FIX SAFES				
2000	tr 197°	POLIY	tr 109°	SAFES
CATEGORY	A	B	C	D
RNP 0.11 DA		363/40	364 (400-¾)	
RNP 0.30 DA		414/50	415 (500-1)	
AUTHORIZATION REQUIRED				

SC-4, 16 APR 2026 to 14 MAY 2026

SC-4, 16 APR 2026 to 14 MAY 2026