

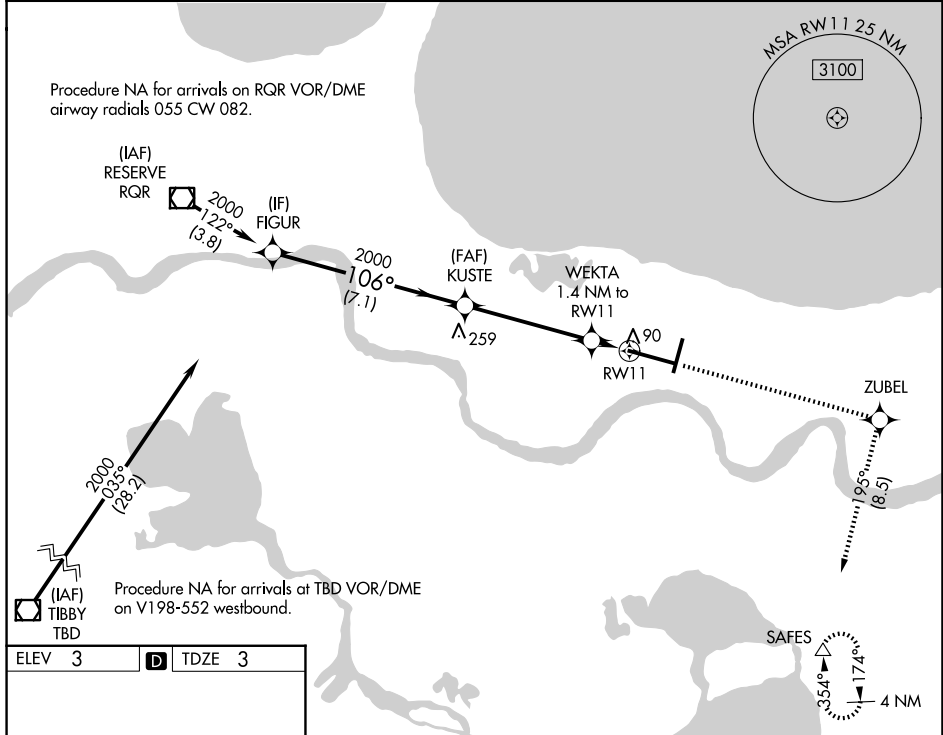
WAAS CH 61319 W11A	APP CRS 106°	Rwy Ldg TDZE Apt Elev	9800 3 3
--	------------------------	-----------------------------	-------------------------------------

RNAV (GPS) Y RWY 11

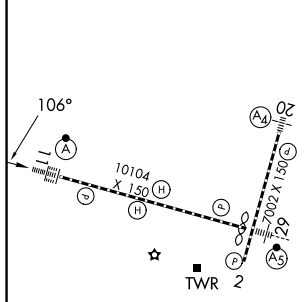
LOUIS ARMSTRONG NEW ORLEANS INTL (MSY)

RNP APCH - GPS.	ALSF-2	MISSED APPROACH: Climb to 2000 direct ZUBEL and on track 195° to SAFES and hold.
<p>▼ For uncompensated Baro-VNAV systems, LNAV/VNAV NA below -1°C or above 54°C. For inop ALS, increase LNAV/VNAV all Cats visibility to RVR 4000.</p>		

D-ATIS 127.55	NEW ORLEANS APP CON 125.5 350.35 (W) 133.15 290.3 (E)	NEW ORLEANS TOWER 119.5 254.3	GND CON 121.9 273.525
-------------------------	---	---	---------------------------------



ELEV 3	D	TDZE 3
--------	----------	--------



VGSI and RNAV glidepath not coincident (VGSI Angle 2.80/TCH 73).		2000	ZUBEL	SAFES
		↑	✧	tr 195°
FIGUR	KUSTE	WEKTA	RW11	
2000	2000	1.4 NM to RW11	RW11	
GP 3.00°				
TCH 55	7.1 NM	4.7 NM	1.4 NM	
CATEGORY	A	B	C	D
LPV DA	203/18		200 (200-½)	
LNAV/VNAV DA	253/24		250 (300-½)	
LNAV MDA	340/24	337 (400-½)	340/26	337 (400-½)
CIRCLING	520-1 517 (600-1)	540-1 537 (600-1)	580-1½ 577 (600-1½)	580-2 577 (600-2)

RLLS Rwy 2
TDZ/CL Rwy 11
HIRL All Runways

NEW ORLEANS, LOUISIANA
Amdt 2D 30OCT25

LOUIS ARMSTRONG NEW ORLEANS INTL (MSY)
30°00'N-90°16'W
RNAV (GPS) Y RWY 11

SC-4, 16 APR 2026 to 14 MAY 2026

SC-4, 16 APR 2026 to 14 MAY 2026