

WAAS CH 40007 W20A	APP CRS 197°	Rwy Ldg 6948 TDZE -1 Apt Elev 3
--	------------------------	--

RNAV (GPS) Y RWY 20

LOUIS ARMSTRONG NEW ORLEANS INTL (MSY)

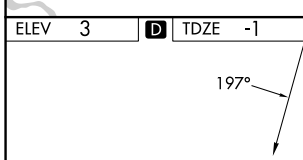
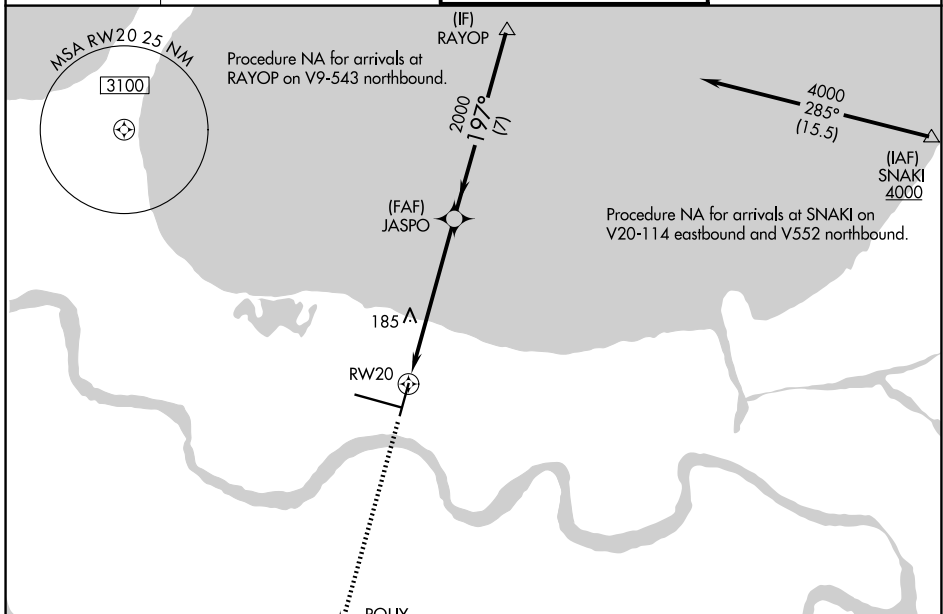
RNP APCH - GPS.

▼ Rwy 20 helicopter visibility reduction below RVR 4000 NA. Inop table does not apply to LPV all Cats. For uncompensated Baro-VNAV systems, LNAV/VNAV NA below -1°C or above 54°C. For inop ALS, increase LNAV Cat C/D visibility to 1½ SM.

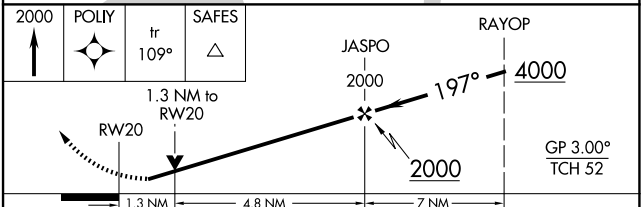
MALS

MISSED APPROACH:
Climb to 2000 direct POLY and on track 109° to SAFES and hold.

D-ATIS 127.55	NEW ORLEANS APP CON 125.5 350.35 (W) 133.15 290.3 (E)	NEW ORLEANS TOWER 119.5 254.3	GND CON 121.9 273.525
-------------------------	---	---	---------------------------------



ELEV 3	D	TDZE -1
<p>RLS Rwy 2 TDZ/CL Rwy 11 HIRL All Runways</p>		



CATEGORY	A	B	C	D
LPV DA		249/40	250 (300-¾)	
LNAV/VNAV DA		325/40	326 (400-¾)	
LNAV MDA	460/40	461 (500-¾)	460/55	461 (500-1)
CIRCLING	520-1 517 (600-1)	540-1 537 (600-1)	580-1½ 577 (600-1½)	580-2 577 (600-2)

SC-4, 16 APR 2026 to 14 MAY 2026

SC-4, 16 APR 2026 to 14 MAY 2026