

| | | |
|---|------------------------|---|
| LOC/DME I-TLK 111.5 Chan 52 | APP CRS 134° | Rwy Ldg 9093 TDZE 13 Apt Elev 13 |
|---|------------------------|---|

ILS RWY 13L (CAT II)

JOHN F KENNEDY INTL (JFK)

RNAV 1-GPS or RADAR required for procedure entry.

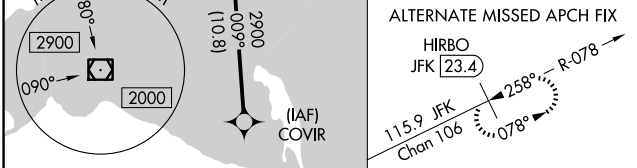
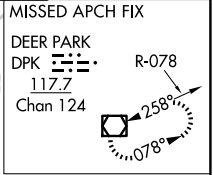
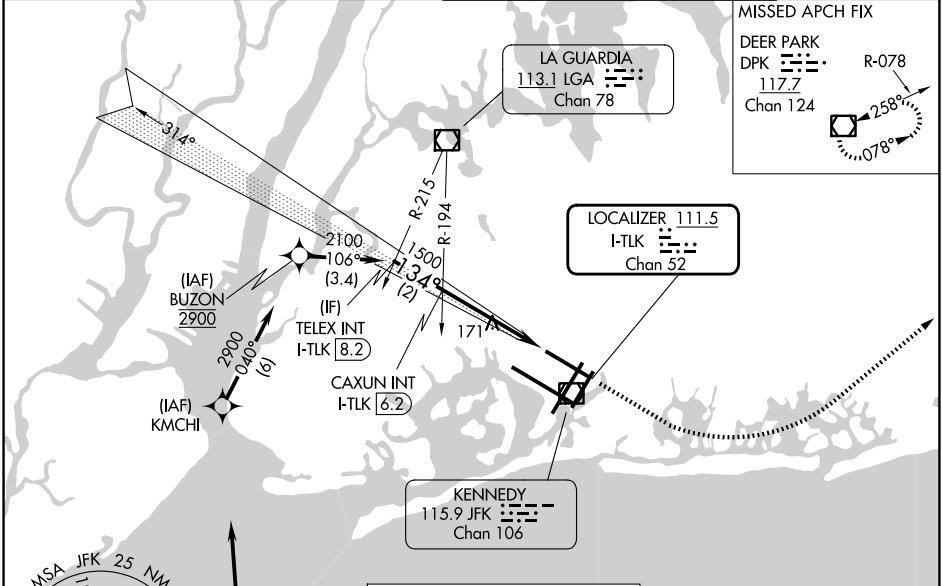
From COVIR, KMCHI, BUZON: RNAV-1 GPS required.

ALSF-2

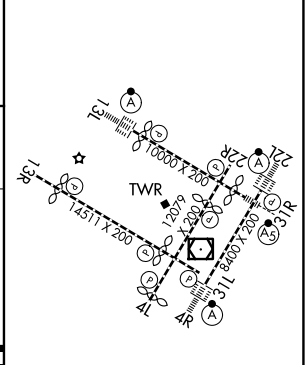
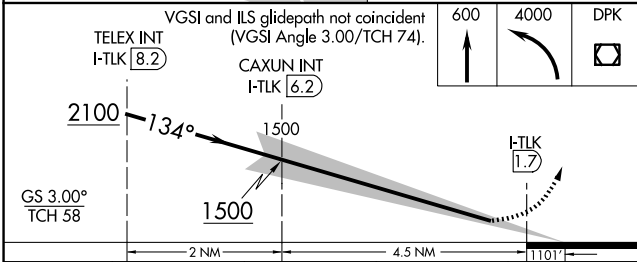


MISSED APPROACH: Climb to 600 then climbing left turn to 4000 direct DPK VOR/DME and hold.

| | | | |
|---|---|---|--------------------------------------|
| D-ATIS (SW) 115.4 (NE) 117.7 128.725 | NEW YORK APP CON 128.125 269.0 | KENNEDY TOWER 119.1 281.55 (4R/22L and 13L/31R) 123.9 281.55 (4L/22R and 13R/31L) | GND CON 121.9 348.6 |
|---|---|---|--------------------------------------|



| | |
|---------|------------------|
| ELEV 13 | D TDZE 13 |
|---------|------------------|



| | | | | |
|-----------|----------------------|---|---|---|
| CATEGORY | A | B | C | D |
| S-ILS 13L | RA 150/16 150 DA 163 | | | |

CATEGORY II ILS - SPECIAL AIRCREW & AIRCRAFT CERTIFICATION REQUIRED

RLS Rwy 13L and 13R
HIRL all Rwy
TDZ/CL Rwy 4L, 4R, 13L, 22L and 31R

NE-2, 16 APR 2026 to 14 MAY 2026

NE-2, 16 APR 2026 to 14 MAY 2026