

LOC/DME I-HWY <b>110.9</b> Chan <b>46</b>	APP CRS <b>224°</b>	Rwy Ldg <b>8400</b> TDZE <b>12</b> Apt Elev <b>13</b>
---	------------------------	---

# ILS RWY 22L (CAT II & III)

JOHN F KENNEDY INTL (JFK)

RNAV 1-GPS or RADAR required for procedure entry.  
From CIMBL, NRTON: RNAV 1-GPS required.

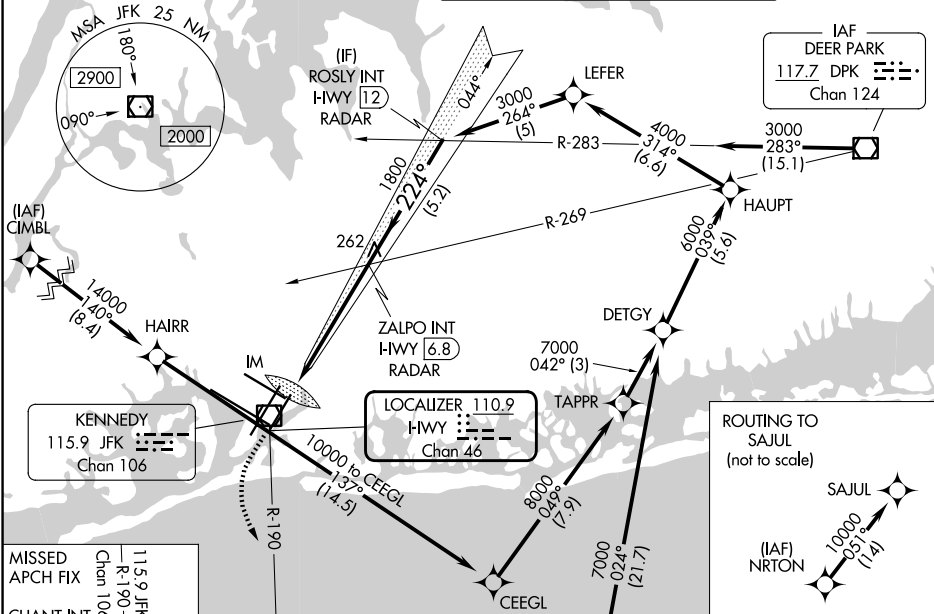
ALSF-2



MISSED APPROACH: Climb to 500 then climbing left turn to 3000 on JFK VOR/DME R-190 to CHANT INT/19 DME and hold.

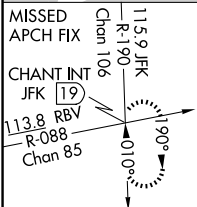
Simultaneous approach authorized.

D-ATIS (SW) <b>115.4</b>	D-ATIS (NE) <b>117.7</b>	NEW YORK APP CON <b>128.125 269.0</b>	KENNEDY TOWER <b>119.1 281.55</b> <b>123.9 281.55</b> (4R/22L and 13L/31R) (4L/22R and 13R/31L)	GND CON <b>121.9 348.6</b>
-----------------------------	-----------------------------	--	---	-------------------------------



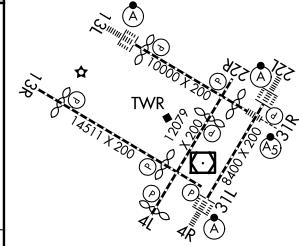
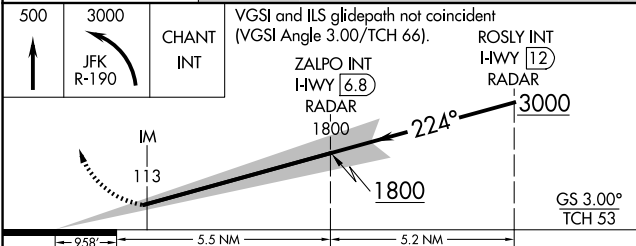
NE-2, 16 APR 2026 to 14 MAY 2026

NE-2, 16 APR 2026 to 14 MAY 2026



SEE INSET FOR ROUTING TO SAJUL

ELEV 13	<b>D</b>	TDZE 12
---------	----------	---------



CATEGORY	A	B	C	D
S-ILS 22L	CAT II RA 113/12 100 DA 112			
S-ILS 22L	CAT III RVR 06			

## CATEGORY II & III ILS - SPECIAL AIRCREW & AIRCRAFT CERTIFICATION REQUIRED

RLS Rwws 13L and 13R  
HIRL all Rwws  
TDZ/CL Rwws 4L, 4R, 13L, 22L and 31R