

LOC/DME I-JFK	APP CRS	Rwy Ldg	8400
109.5	044°	TDZE	12
Chan 32		Apt Elev	13

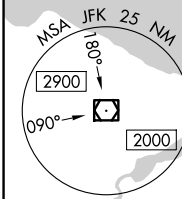
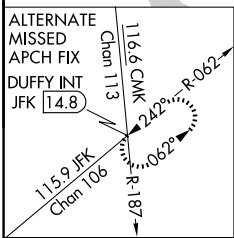
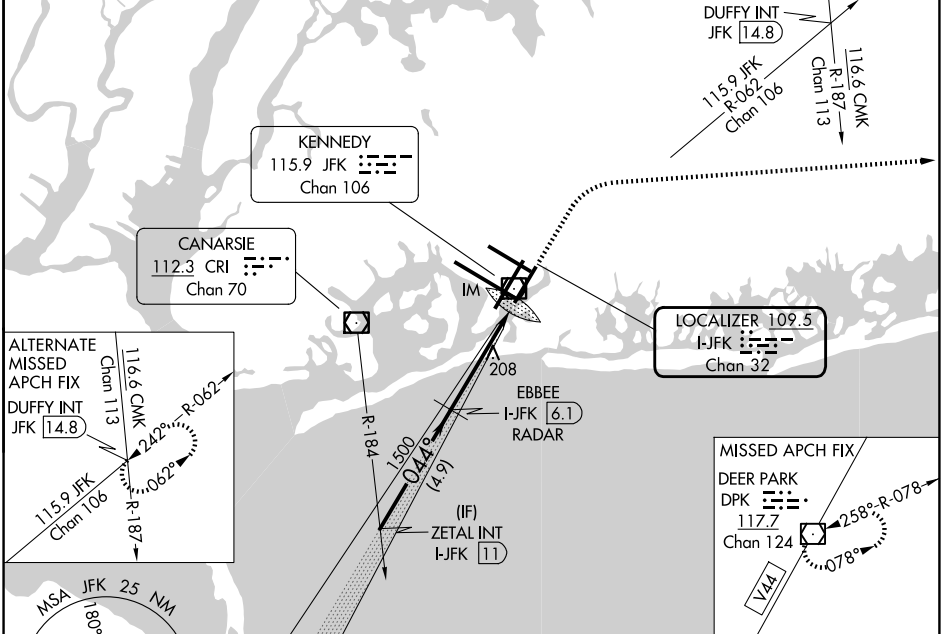
ILS RWY 4R (CAT II & III)

JOHN F KENNEDY INTL (JFK)

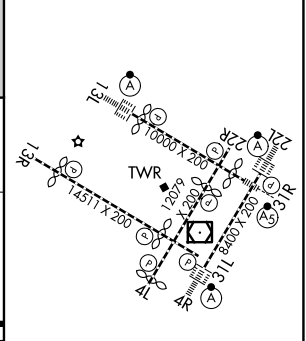
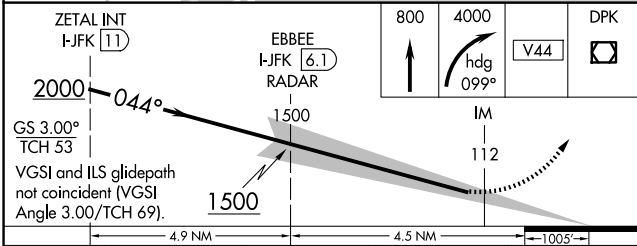
RADAR required for procedure entry. ALSF-2

Simultaneous approach authorized. MISSED APPROACH: Climb to 800 then climbing right turn to 4000 heading 099° and V44 to DPK VOR/DME and hold.

D-ATIS (SW)	D-ATIS (NE)	NEW YORK APP CON	KENNEDY TOWER	GND CON
115.4	117.7	128.125	119.1 281.55	121.9 348.6
			(4R/22L and 13L/31R)	
			(4L/22R and 13R/31L)	



ELEV 13	D	TDZE 12
---------	---	---------



CATEGORY	A	B	C	D
S-ILS 4R	CAT II RA 112/12		100 DA 112	
S-ILS 4R	CAT III		RVR 06	

CATEGORY II & III ILS - SPECIAL AIRCREW & AIRCRAFT CERTIFICATION REQUIRED

RLS Rwy's 13L and 13R
HIRL all Rwy's
TDZ/CL Rwy's 4L, 4R, 13L, 22L and 31R

NE-2, 16 APR 2026 to 14 MAY 2026

NE-2, 16 APR 2026 to 14 MAY 2026