

LOC/DME I-HWY	APP CRS	Rwy Ldg	8400
<b>110.9</b>	<b>224°</b>	TDZE	12
Chan <b>46</b>		Apt Elev	13

# ILS or LOC RWY 22L

JOHN F KENNEDY INTL (JFK)

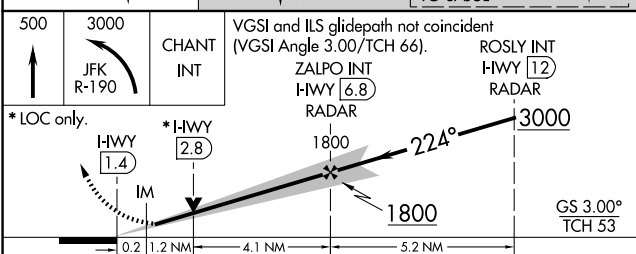
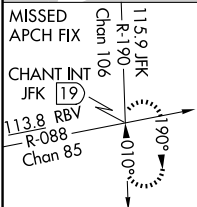
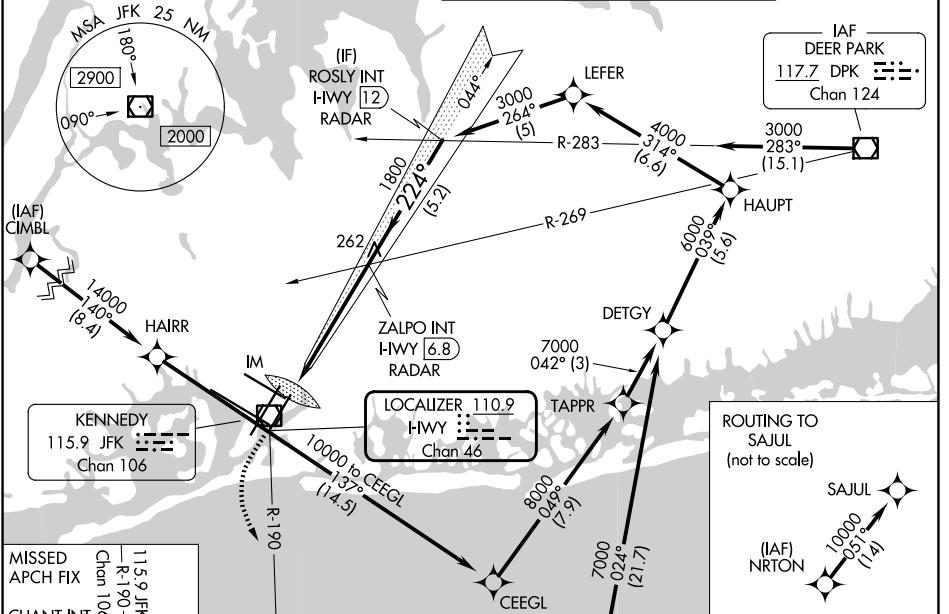
RNAV 1-GPS or RADAR required for procedure entry.  
 From CIMBL, NRTON: RNAV 1-GPS required.

ALSF-2

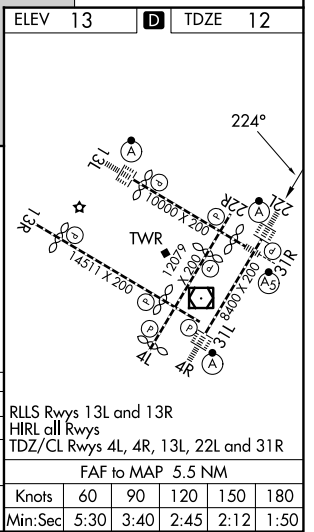
MISSED APPROACH: Climb to 500 then climbing left turn to 3000 on JFK VOR/DME R-190 to CHANT INT/19 DME and hold.

Simultaneous approach authorized.

D-ATIS (SW)	D-ATIS (NE)	NEW YORK APP CON	KENNEDY TOWER	GND CON
<b>115.4</b>	<b>117.7 128.725</b>	<b>128.125 269.0</b>	<b>119.1 281.55</b> (4R/22L and 13L/31R) <b>123.9 281.55</b> (4L/22R and 13R/31L)	<b>121.9 348.6</b>



CATEGORY	A	B	C	D
S-ILS 22L	212/18		200 (200-1/2)	
S-LOC 22L	520/24 508 (600-1/2)		520/55 508 (600-1)	
CIRCLING	640-1 627 (700-1)		680-1 3/4 667 (700-1 3/4) 680-2 667 (700-2)	



NE-2, 16 APR 2026 to 14 MAY 2026

NE-2, 16 APR 2026 to 14 MAY 2026