

LOC/DME I-JOC <b>109.5</b> Chan <b>32</b>	APP CRS <b>221°</b>	Rwy Ldg <b>7795</b> TDZE <b>13</b> Apt Elev <b>13</b>
---	------------------------	---

# ILS or LOC RWY 22R

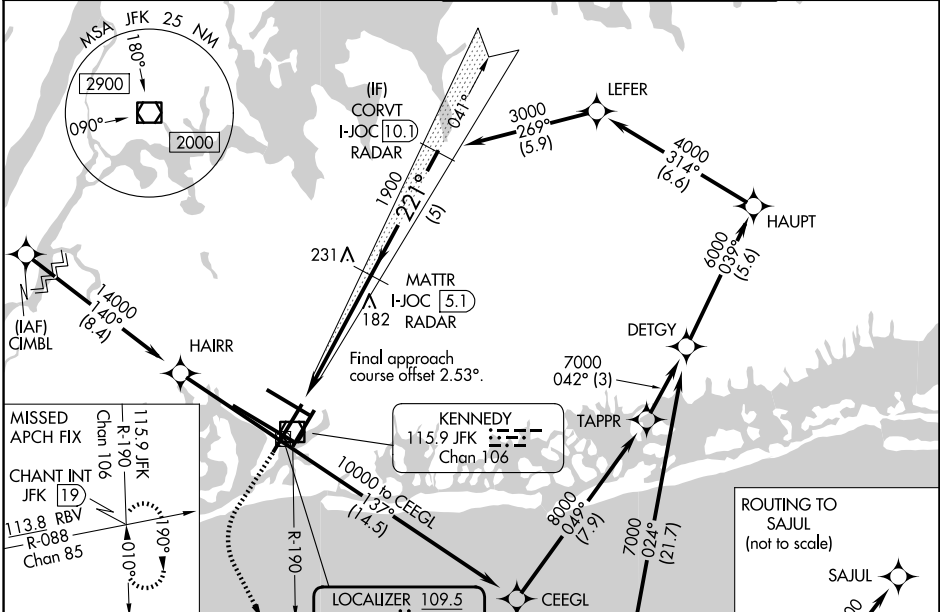
JOHN F KENNEDY INTL (JFK)

RNAV 1-GPS or RADAR required for procedure entry.  
From CIMBL, NRTON: RNAV 1-GPS required. DME or RADAR required.

**Simultaneous approach authorized.**

MISSED APPROACH: Climb to 2000 then climbing left turn to 4000 on JFK VOR/DME R-190 to CHANT INT and hold.

(SW) <b>115.4</b>	D-ATIS (NE) <b>117.7</b>	<b>128.725</b>	NEW YORK APP CON <b>128.125</b>	<b>269.0</b>	KENNEDY TOWER <b>119.1</b>	<b>281.55</b>	(4R/22L and 13L/31R) <b>123.9</b>	<b>281.55</b>	(4L/22R and 13R/31L)	GND CON <b>121.9</b>	<b>348.6</b>
----------------------	-----------------------------	----------------	------------------------------------	--------------	-------------------------------	---------------	--------------------------------------	---------------	----------------------	-------------------------	--------------



MISSED APCH FIX  
Chan 106

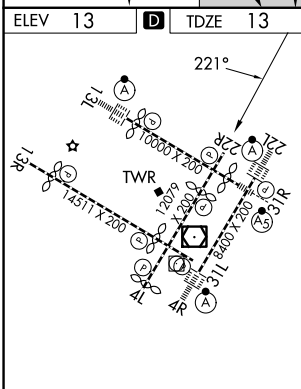
CHANT INT JFK [19]  
R-088  
Chan 85

113.8 RBV  
R-088  
Chan 85

14000 (8.4)  
140°

115.9 JFK  
R-190  
Chan 106

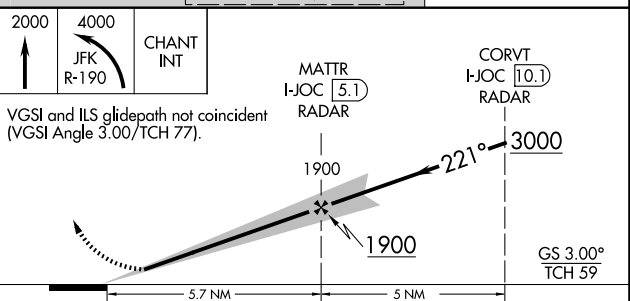
1010°



ROUTING TO SAJUL (not to scale)

SAJUL (IAF) NRTON 10000 (11.4)

SEE INSET FOR ROUTING TO SAJUL



RLS Rwws 13L and 13R  
HIRL all Rwws  
TDZ/CL Rwws 4L, 4R, 13L, 22L and 31R

FAF to MAP 5.7 NM

Knots	60	90	120	150	180
Min:Sec	5:42	3:48	2:51	2:17	1:54

CATEGORY	A	B	C	D
S-ILS 22R	263/40 250 (300-¾)			
S-LOC 22R	460/55	447 (500-1)	460-1⅜	447 (500-1⅜)
CIRCLING	640-1 627 (700-1)		680-1¾ 667 (700-1¾)	680-2 667 (700-2)

NE-2, 16 APR 2026 to 14 MAY 2026

NE-2, 16 APR 2026 to 14 MAY 2026