

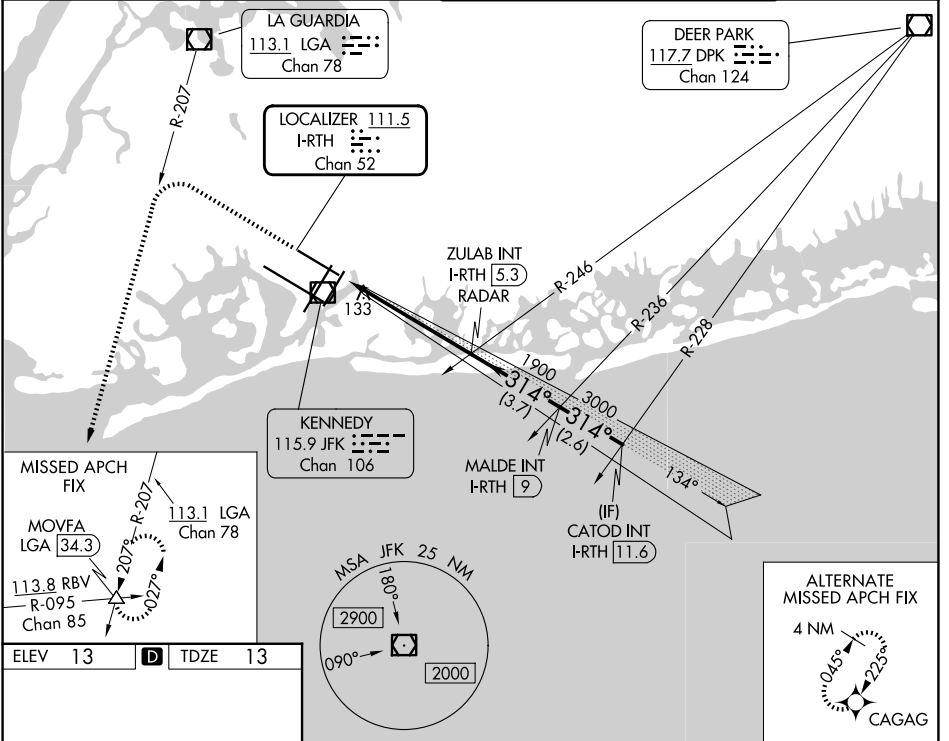
LOC/DME I-RTH 111.5 Chan 52	APP CRS 314°	Rwy Ldg 8486 TDZE 13 Apt Elev 13
--	------------------------	---

ILS or LOC RWY 31R

JOHN F KENNEDY INTL (JFK)

RADAR required for procedure entry.		MALSR 	MISSED APPROACH: Climb to 1800 then climbing left turn to 4000 on LGA VOR/DME R-207 to MOVFA INT/LGA 34.3 DME and hold.
Simultaneous approach authorized.			

(SW) 115.4	D-ATIS (NE) 117.7	128.725	NEW YORK APP CON 128.125	269.0	KENNEDY TOWER 119.1 281.55 (4R/22L and 13L/31R) 123.9 281.55 (4L/22R and 13R/31L)	GND CON 121.9 348.6
----------------------	-----------------------------	----------------	------------------------------------	--------------	---	--------------------------------------

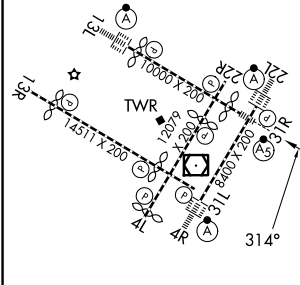


NE-2, 16 APR 2026 to 14 MAY 2026

NE-2, 16 APR 2026 to 14 MAY 2026

ELEV 13	D	TDZE 13
---------	----------	---------

1800	4000	LGA R-207	MOVFA \triangle	VGSI and ILS glidepath not coincident (VGSI Angle 3.00°/TCH 54).
------	------	-----------	-------------------	--



* LOC only.	ZULAB INT I-RTH 5.3 RADAR	MALDE INT I-RTH 9	CATOD INT I-RTH 11.6
I-RTH 0.4	I-RTH 0.8	1900	3000
1.2	4.5 NM	3.7 NM	2.6 NM
GS 3.00° TCH 42			

RLS Rwy's 13L and 13R
HIRL all Rwy's
TDZ/CL Rwy's 4L, 4R, 13L, 22L and 31R
FAF to MAP 5.7 NM

Knots	60	90	120	150	180
Min:Sec	5:42	3:48	2:51	2:17	1:54

CATEGORY	A	B	C	D
S-ILS 31R	212/18 200 (200-½)			
S-LOC 31R	440/24	428 (500-½)	440/40	428 (500-¾)
CIRCLING	640-1	627 (700-1)	680-1¾ 667 (700-1¾)	680-2 667 (700-2)