

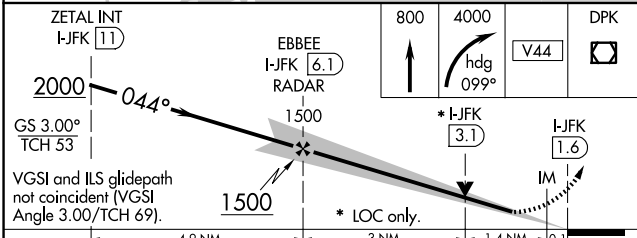
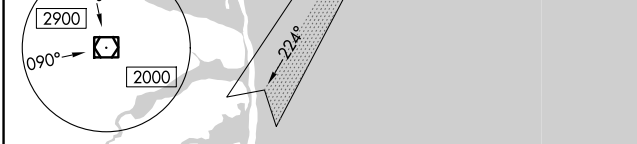
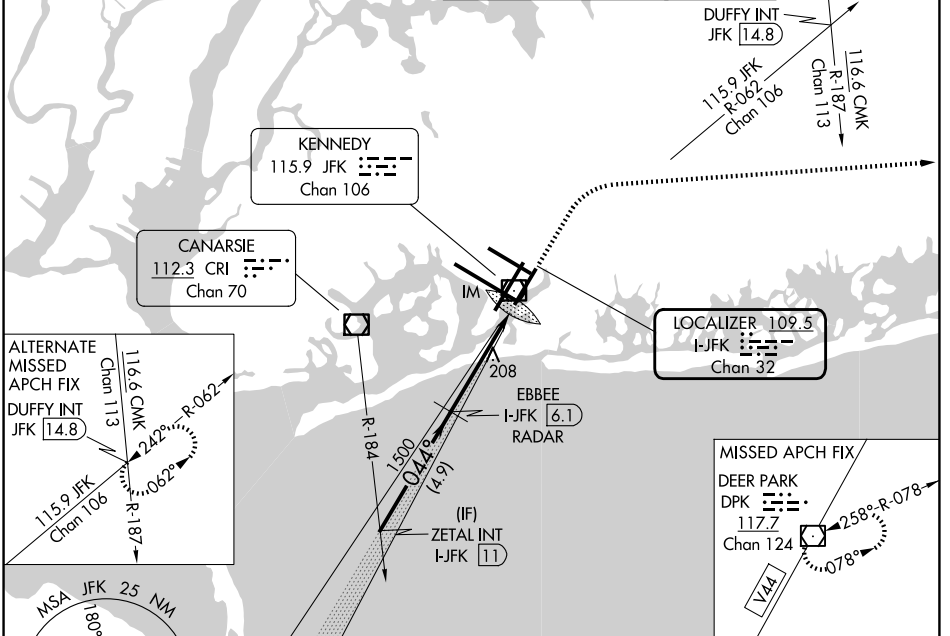
LOC/DME I-JFK	APP CRS	Rwy Ldg	8400
109.5	044°	TDZE	12
Chan 32		Apt Elev	13

ILS or LOC RWY 4R

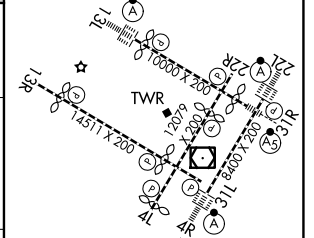
JOHN F KENNEDY INTL (JFK)

RADAR required for procedure entry.		ALSF-2	MISSED APPROACH: Climb to 800 then climbing right turn to 4000 heading 099° and V44 to DPK VOR/DME and hold.
Simultaneous approach authorized.			

(SW)	D-ATIS (NE)	NEW YORK APP CON	KENNEDY TOWER	GND CON
115.4	117.7 128.275	128.125 269.0	119.1 281.55 (4R/22L and 13L/31R) 123.9 281.55 (4L/22R and 13R/31L)	121.9 348.6



ELEV 13	TDZE 12
RLS Rwy 13L and 13R	
HIRL all Rwy	
TDZ/CL Rwy 4L, 4R, 13L, 22L and 31R	



	ZETAL INT I-JFK (11)		EBBEE I-JFK (6.1) RADAR		800	4000	DPK
	2000		1500		↑	hdg 099°	
	GS 3.00° TCH 53		* I-JFK (3.1)		V44		
	VGSi and ILS glidepath not coincident (VGSi Angle 3.00/TCH 69).		* LOC only.		I-JFK (1.6)		
	4.9 NM		3 NM		1.4 NM		0.1
CATEGORY	A	B	C	D			
S-ILS 4R	212/18		200 (200-½)				
S-LOC 4R	540/24	528 (600-½)	540/55	528 (600-1)			
CIRCLING	640-1	627 (700-1)	680-1¾ 667 (700-1¾)	680-2 667 (700-2)			

FAF to MAP 4.5 NM					
Knots	60	90	120	150	180
Min:Sec	4:30	3:00	2:15	1:48	1:30

NE-2, 16 APR 2026 to 14 MAY 2026

NE-2, 16 APR 2026 to 14 MAY 2026