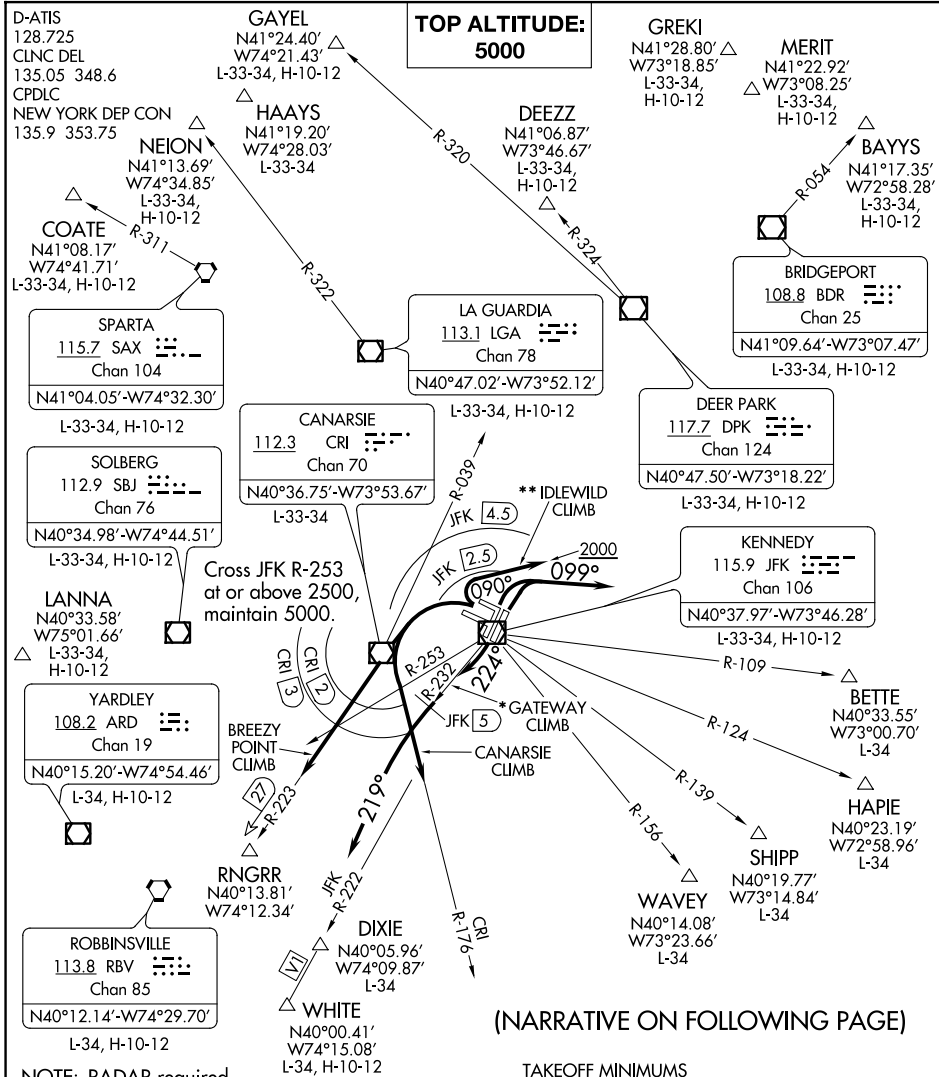


# KENNEDY FIVE DEPARTURE

AL-610 (FAA)

JOHN F KENNEDY INTL (JFK)  
NEW YORK, NEW YORK



NE-2, 16 APR 2026 to 14 MAY 2026

NE-2, 16 APR 2026 to 14 MAY 2026

(NARRATIVE ON FOLLOWING PAGE)

- NOTE: RADAR required.
- NOTE: BAYYS departures expect vectors to BDR VOR/DME or BDR R-054.
- NOTE: BETTE departures expect vectors to JFK R-109.
- NOTE: COATE departures expect vectors to SAX VORTAC or SAX R-311.
- NOTE: DIXIE departures expect vectors to JFK R-222.
- NOTE: HAPIE departures expect vectors to JFK R-124.
- NOTE: RBV departures expect vectors to RBV after RNGRR.
- NOTE: SHIPP departures expect vectors to JFK R-139.
- NOTE: WAVEY departures expect vectors to JFK R-156.
- NOTE: WHITE departures expect vectors to V1.

- TAKEOFF MINIMUMS  
Rwys 4L/R, 13L/R, 22L/R, 31L/R: Standard.
- \* NOTE: DME required. To be assigned during the period of 2200-0700 local.
- \*\* NOTE: To be assigned to non-turbojet aircraft. If unable to remain within JFK 2.5 DME, advise ATC.

NOTE: Chart not to scale.



DEPARTURE ROUTE DESCRIPTION

TAKEOFF RUNWAYS 4L/R: Climbing right turn heading 099°, thence . . . .

TAKEOFF RUNWAYS 13L/R: Climb on assigned heading, thence . . . .

TAKEOFF RUNWAYS 22L/R: Climb heading 224°, thence . . . .

\* GATEWAY CLIMB: Climbing right turn to intercept the JFK R-232 until 5 DME, then turn left heading 219°, thence . . . .

TAKEOFF RUNWAYS 31L/R:

BREEZY POINT CLIMB: Climbing left turn direct CRI VOR/DME. Make turn east of CRI R-039 (remain within JFK 4.5 DME), then via CRI R-223 to RNGRR/CRI 27 DME. Cross CRI 3 DME or JFK R-253 at or above 2500, thence . . . .

CANARSIE CLIMB: Climbing left turn direct CRI VOR/DME. Make turn east of CRI R-039 (remain within JFK 4.5 DME), then via CRI R-176. Cross CRI 2 DME or JFK R-253 at or above 2500, thence . . . .

\*\* IDLEWILD CLIMB: Climbing right turn to 2000 heading 090° (remain within JFK 2.5 DME), thence . . . .

. . . . via RADAR vectors to assigned route/fix, maintain 5000. Expect clearance to filed altitude/flight level ten (10) minutes after departure.

NE-2, 16 APR 2026 to 14 MAY 2026

NE-2, 16 APR 2026 to 14 MAY 2026