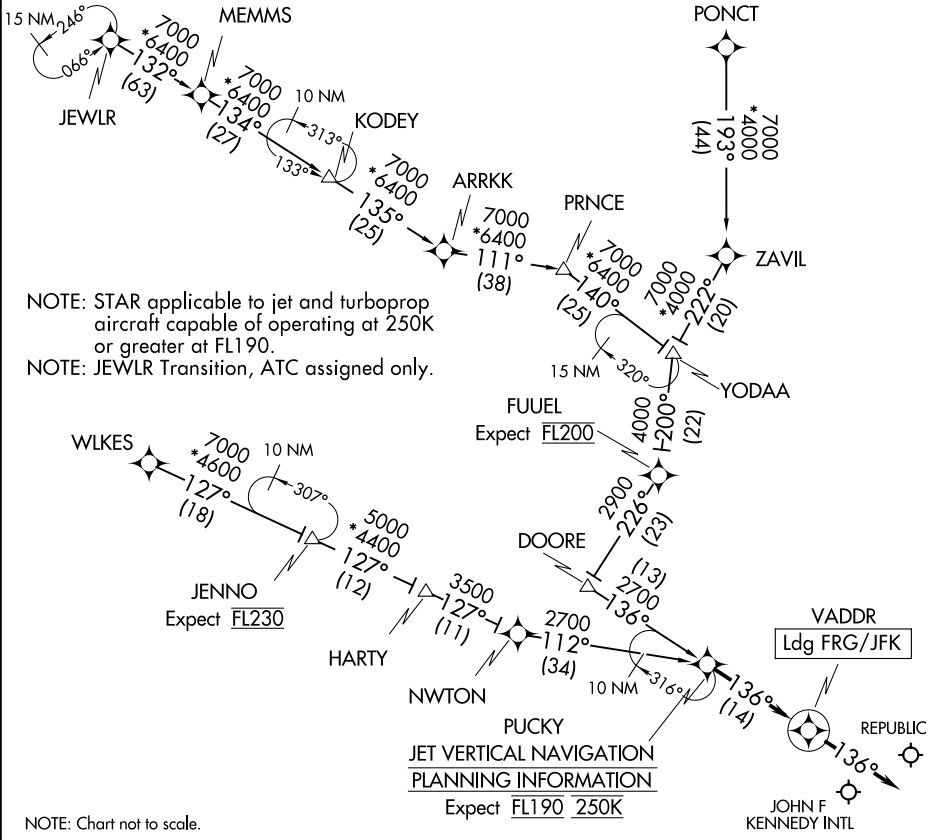


PUCKY ONE ARRIVAL (RNAV)

NEW YORK, NEW YORK

NEW YORK APP CON
 128.125 269.0
 FRG ATIS
 126.65
 JFK D-ATIS
 128.725 (ARR/DEP)
 117.7 (ARR-NE)
 115.4 (ARR-SW)

RNAV 1 - DME/DME/IRU or GPS.
 RADAR required.



NOTE: Chart not to scale.

ARRIVAL ROUTE DESCRIPTION

- ARRKK TRANSITION (ARRKK.PUCKY1)
- JEWLR TRANSITION (JEWLR.PUCKY1)
- MEMMS TRANSITION (MEMMS.PUCKY1)
- PONCT TRANSITION (PONCT.PUCKY1)
- WLKES TRANSITION (WLKES.PUCKY1)
- YODAA TRANSITION (YODAA.PUCKY1)

LANDING ALL AIRPORTS: From PUCKY on track 136° to VADDR, then on track 136°.
 Expect RADAR vectors to final approach course.

PUCKY ONE ARRIVAL (RNAV)

NEW YORK, NEW YORK

NE-2, 16 APR 2026 to 14 MAY 2026

NE-2, 16 APR 2026 to 14 MAY 2026