

WAAS CH <b>40019</b> <b>W22B</b>	APP CRS <b>224°</b>	Rwy Ldg <b>7795</b> TDZE <b>13</b> Apt Elev <b>13</b>
--	------------------------	---

# RNAV (GPS) RWY 22R

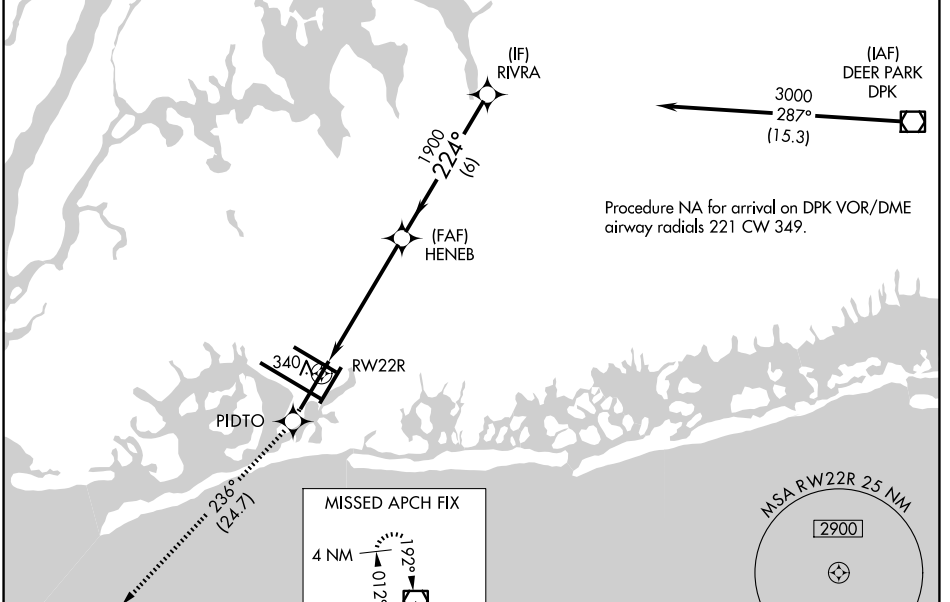
JOHN F KENNEDY INTL (JFK)

RNP APCH.

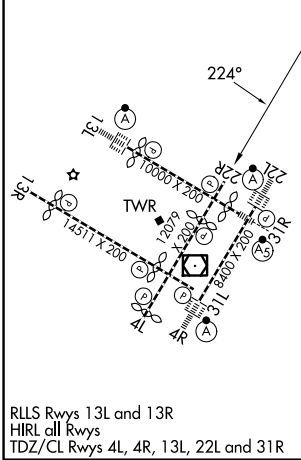
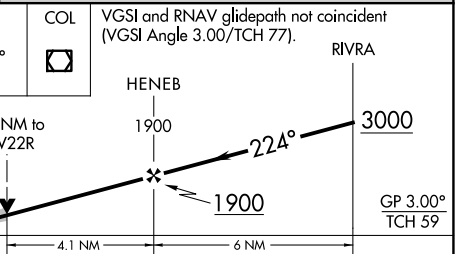
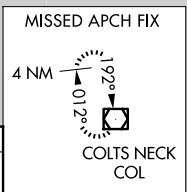
Simultaneous approach authorized. Use of FD or AP providing RNAV track guidance required during simultaneous operations. LNAV procedure NA during simultaneous operations. For uncompensated Baro-VNAV systems, LNAV/VNAV NA below -12°C or above 54°C.

MISSED APPROACH:  
Climb to 4000 direct  
PIDTO and on track 236°  
to COL VOR/DME and hold.

(SW)	D-ATIS (NE)	NEW YORK APP CON	KENNEDY TOWER	GND CON
<b>115.4</b>	<b>117.7 128.725</b>	<b>128.125 269.0</b>	<b>119.1 281.55</b> (4R/22L and 13L/31R) <b>123.9 281.55</b> (4L/22R and 13R/31L)	<b>121.9 348.6</b>



ELEV 13	<b>D</b>	TDZE 13
---------	----------	---------



CATEGORY	A	B	C	D
LPV DA		269/40	256 (300-¾)	
LNAV/VNAV DA		501-1½	488 (500-1½)	
LNAV MDA	600/55	587 (600-1)	600-1¾	587 (600-1¾)
CIRCLING	640-1	627 (700-1)	680-1¾ 667 (700-1¾)	680-2 667 (700-2)

NEW YORK, NEW YORK  
Amdt 1G 21MAY20

40°38'N-73°47'W

# RNAV (GPS) RWY 22R

NE-2, 16 APR 2026 to 14 MAY 2026

NE-2, 16 APR 2026 to 14 MAY 2026