

WAAS CH 81819	APP CRS 044°	Rwy Ldg 8400 TDZE 12 Apt Elev 13
-------------------------	------------------------	---

RNAV (GPS) Y RWY 4R

JOHN F KENNEDY INTL (JFK)

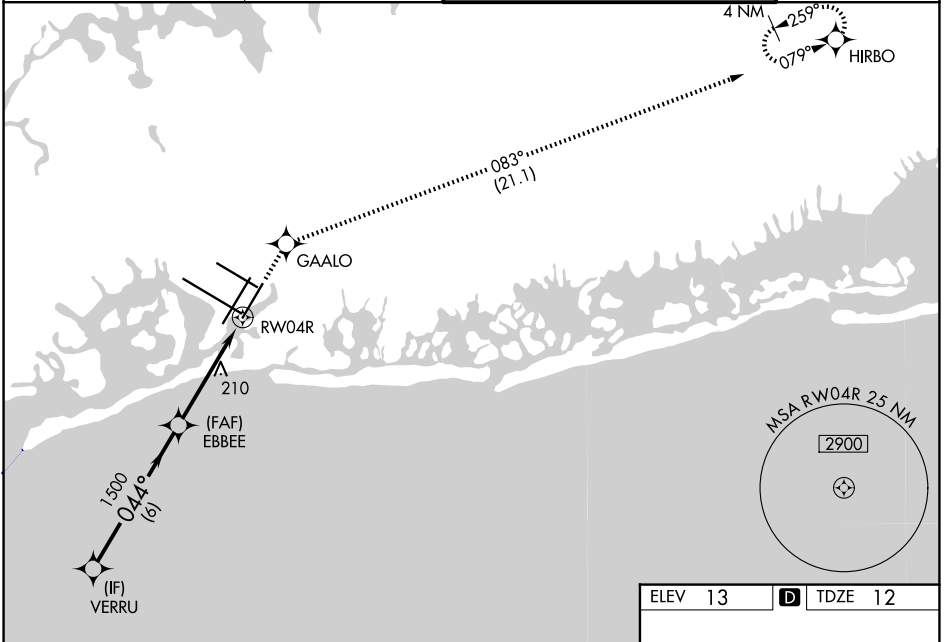
RNP APCH.

Simultaneous approach authorized. LNAV procedure NA during simultaneous operations. Use of FD or AP providing RNAV track guidance required during simultaneous operations. For uncompensated Baro-VNAV systems, LNAV/VNAV NA below -12°C or above 54°C. For inop ALS, increase LNAV/VNAV all Cats visibility to RVR 6000 and LNAV Cat C/D visibility to 1% SM.

ALSF-2

MISSED APPROACH: (Do not exceed 210K until GAALO) Climb to 4000 direct GAALO and on track 083° to HIRBO and hold.

(SW)	D-ATIS (NE)	NEW YORK APP CON	KENNEDY TOWER	GND CON
115.4	117.7 128.725	128.125 269.0	119.1 281.55 (4R/22L and 13L/31R) 123.9 281.55 (4L/22R and 13R/31L)	121.9 348.6



VGSI and RNAV glidepath not coincident (VGSI Angle 3.00/TCH 69).

4000 GAALO tr 083° HIRBO

VERRU

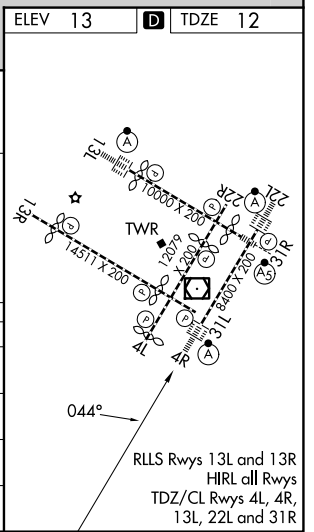
GP 3.00° TCH 53

2000 044° 1500 1500

6 NM 3.1 NM 1.4 NM

*LNAV only

CATEGORY	A	B	C	D
LPV DA		212/18	200 (200-½)	
LNAV/VNAV DA		369/40	357 (400-¾)	
LNAV MDA	520/24	508 (600-½)	520/55	508 (600-1)
CIRCLING	640-1	627 (700-1)	680-1¾ 667 (700-1¾)	680-2 667 (700-2)



NE-2, 16 APR 2026 to 14 MAY 2026

NE-2, 16 APR 2026 to 14 MAY 2026