

(SKORR6.SKORR) 26078

AL-610 (FAA)

JOHN F KENNEDY INTL (JFK)

# SKORR SIX DEPARTURE (RNAV)

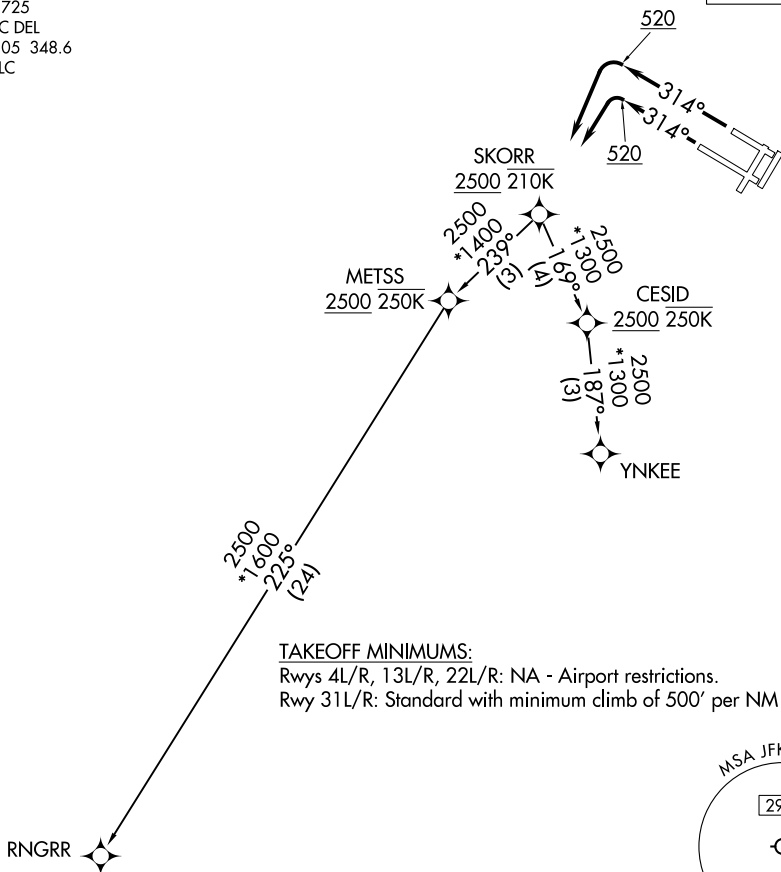
NEW YORK, NEW YORK

NEW YORK DEP CON  
135.9 353.75  
D-ATIS  
128.725  
CLNC DEL  
135.05 348.6  
CPDLC

RNAV 1 - DME/DME/IRU or GPS required.

RADAR required.

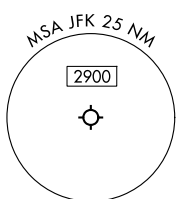
**TOP ALTITUDE:  
5000**



### TAKEOFF MINIMUMS:

Rwys 4L/R, 13L/R, 22L/R: NA - Airport restrictions.

Rwy 31L/R: Standard with minimum climb of 500' per NM to 520.



NOTE: Chart not to scale.

### DEPARTURE ROUTE DESCRIPTION

**TAKEOFF RUNWAYS 31L/R:** Climb on heading 314° to 520, then left turn direct to cross SKORR at or above 2500 and at or below 210K, then on assigned transition, maintain 5000, expect filed altitude 10 minutes after departure.

All aircraft ATC climb gradient: if unable to accept climb rate advise ATC prior to taxi:  
Rwy 31L/R: 620' per NM to 520'.

RNGRR TRANSITION (SKORR6.RNGRR)

YNKEE TRANSITION (SKORR6.YNKEE)

**SKORR SIX DEPARTURE (RNAV)**  
(SKORR6.SKORR) 19MAR26

NEW YORK, NEW YORK  
JOHN F KENNEDY INTL (JFK)

NE-2, 16 APR 2026 to 14 MAY 2026

NE-2, 16 APR 2026 to 14 MAY 2026