

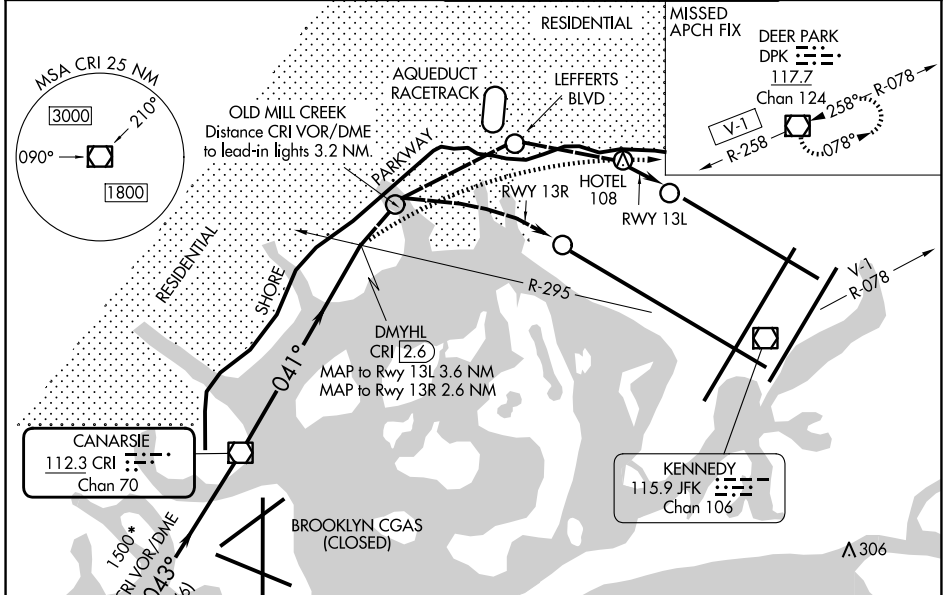
VOR/DME CRI 112.3 Chan 70	APP CRS 041°	Rwy Ldg 13R 12467 TDZE 13L 9093 Apt Elev 13
--	------------------------	--

VOR or GPS RWY 13L/R

JOHN F KENNEDY INTL (JFK)

For inop lead-in lights, procedure NA.	Rwy13L ALSF-2 	MISSED APPROACH: At or beyond MAP, climbing right turn to 4000 on heading 100° and V-1 to DPK VOR/DME and hold.

(SW) D-ATIS (NE) 115.4 117.7 128.725	NEW YORK APP CON 128.125 269.0	KENNEDY TOWER 119.1 281.55 (4R/22L and 13L/31R) 123.9 281.55 (4L/22R and 13R/31L)	GND CON 121.9 348.6
--	--	---	-------------------------------



DME or RADAR REQUIRED

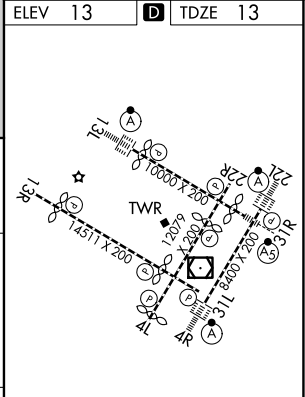
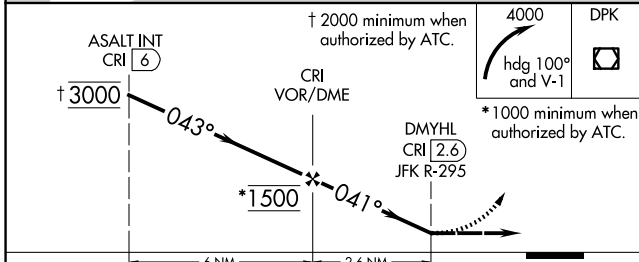
ELEV 13 **TDZE 13**

○ Lead-in light groups

When visual reference established, fly visual to airport via lead-in lights to Rwy 13L or 13R. Close adherence to flight track required for noise abatement.

† 2000 minimum when authorized by ATC.

* 1000 minimum when authorized by ATC.



CATEGORY	A	B	C	D
RLLS-13L	800-2 787 (800-2)		800-2½ 787 (800-2¼)	800-2½ 787 (800-2½)
RLLS-13R	800-2 787 (800-2)		800-2½ 787 (800-2¼)	800-2½ 787 (800-2½)

RLLS Rws 13L and 13R
HIRL all Rws
TDZ/CL Rws 4L, 4R, 13L, 22L and 31R
FAF to MAP 2.6 NM

Knots	60	90	120	150	180
Min:Sec	2:36	1:44	1:18	1:02	0:52

NE-2, 16 APR 2026 to 14 MAY 2026

NE-2, 16 APR 2026 to 14 MAY 2026