

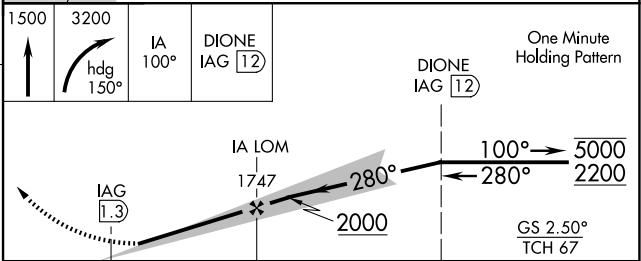
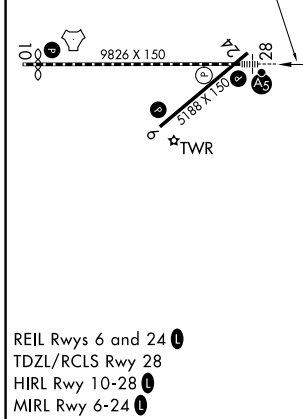
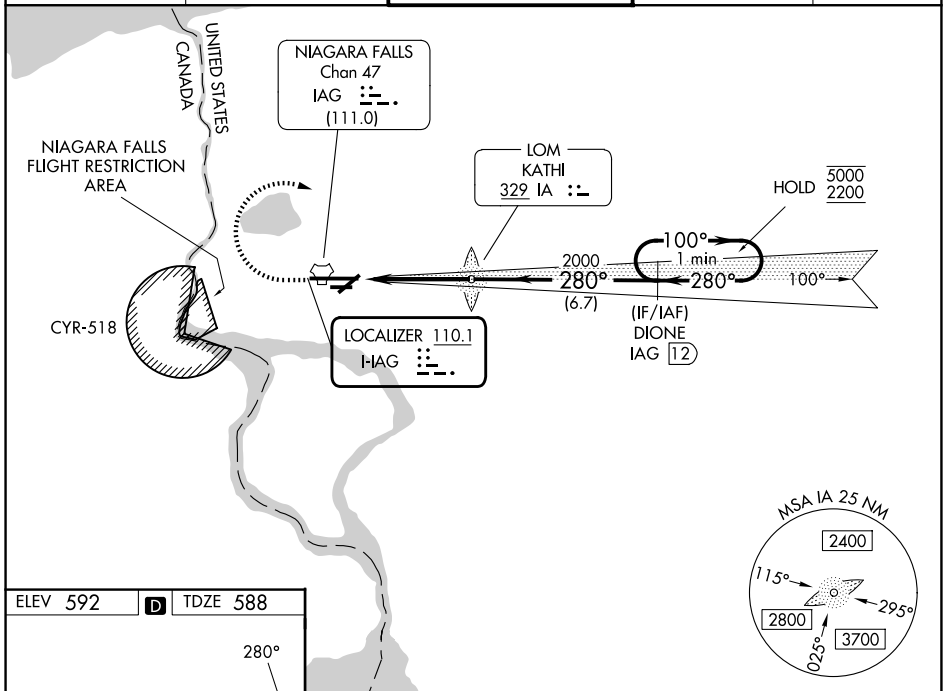
LOC I- IAG 110.1	APP CRS 280°	Rwy Ldg TDZE Apt Elev	9129 588 592
-----------------------------------	------------------------	-----------------------------	---

ILS Z or LOC Z RWY 28

NIAGARA FALLS INTL (IAG)

ADF required. DME required.	MALSR	MISSED APPROACH: Climb to 1500 then climbing right turn to 3200 on heading 150° and KATHI LOM BRG-100 to DIONE/IAG 12 DME and hold.
<p>▼ Circling Rwy 6 NA at night. Rwy 28 helicopter visibility reduction below RVR 4000 NA. Circling NA for Cat E southeast of Rwy 6-24. Inop table does not apply to S-ILS 28 all Cats. For inop ALS, increase S-LOC 28 visibility Cats A/B RVR 5500, Cats C/D/E 1 3/8 SM.</p> <p>▲</p>		

ATIS 120.8 269.4	BUFFALO APP CON 126.5 317.6	NIAGARA TOWER ★ 118.5 (CTAF) 0 349.0	GND CON 125.3 275.8	UNICOM 122.95
----------------------------	---------------------------------------	--	-------------------------------	-------------------------



CATEGORY	A	B	C	D	E
S-ILS 28	838/40		250 (300-3/4)		
S-LOC 28	1080/40	492 (500-3/4)	1080/50	492 (500-1)	
CIRCLING	1100-1	508 (600-1)	1280-2 688 (700-2)	1280-2 1/4 688 (700-2 1/4)	1280-2 1/2 688 (700-2 1/2)

NE-2, 16 APR 2026 to 14 MAY 2026

NE-2, 16 APR 2026 to 14 MAY 2026