


LOM IA 329	APP CRS 280°	Rwy Ldg TDZE Apt Elev	9129 588 592
----------------------	------------------------	-----------------------------	---

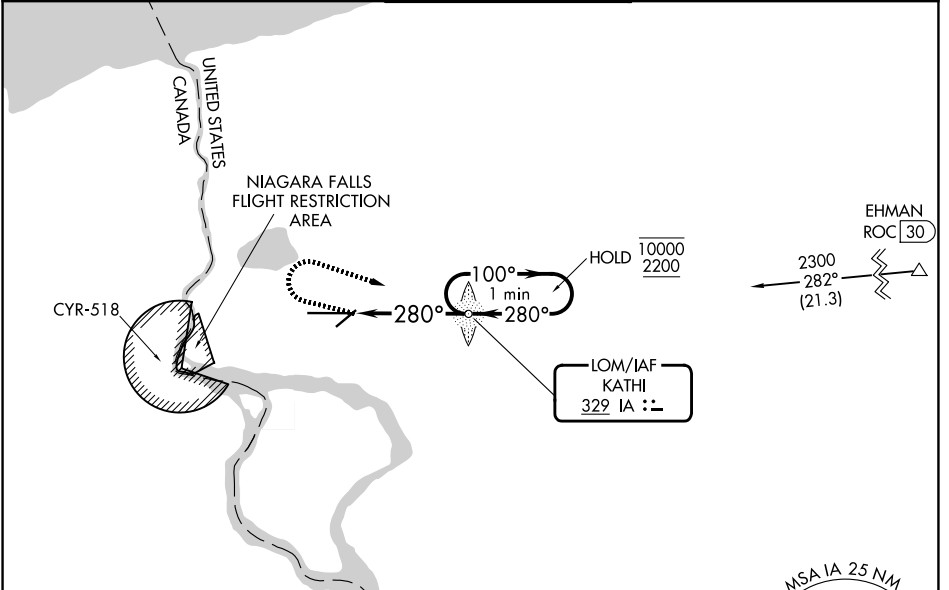
NDB RWY 28

NIAGARA FALLS INTL (IAG)

⚠ Circling Rwy 6 NA at night.
⚠ Rwy 28 helicopter visibility reduction below RVR 4000 NA.
 Circling NA for Cat E southeast of Rwy 6-24.
 For inop ALS, increase visibility Cats A/B to RVR to 5500, Cats C/D/E to 1 3/4 SM.

MALSR  MISSED APPROACH: Climb to 1600 on heading 294° then climbing right turn to 3200 direct KATHI LOM and hold, continue climb-in-hold to 3200.

ATIS 120.8 269.4	BUFFALO APP CON 126.5 317.6	NIAGARA TOWER ★ 118.5 (CTAF) 0 349.0	GND CON 125.3 275.8	UNICOM 122.95
----------------------------	---------------------------------------	--	-------------------------------	-------------------------



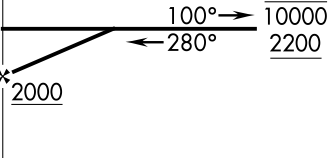


NE-2, 16 APR 2026 to 14 MAY 2026

NE-2, 16 APR 2026 to 14 MAY 2026

ELEV 592	D	TDZE 588
----------	----------	----------



1600	3200	IA	IA LOM KATHI	One Minute Holding Pattern
hdg 294°				
		280°	2000	
		3.10° TCH 55		
		4.1 NM		

	CATEGORY A		CATEGORY B		CATEGORY C		CATEGORY D		CATEGORY E	
S-28	1200/40	612 (700-3/4)	1200-1 3/8		612 (700-1 3/8)					
CIRCLING	1200-1	608 (700-1)	1280-2	1280-2 1/4	1280-2 1/2	688 (700-2)	688 (700-2 1/4)	688 (700-2 1/2)		