

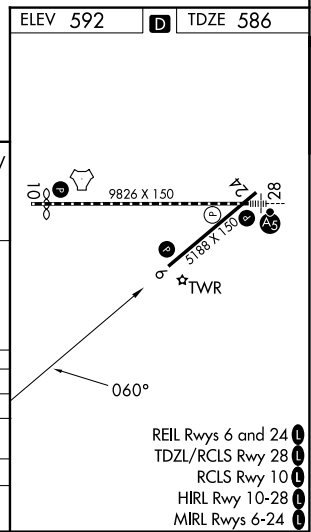
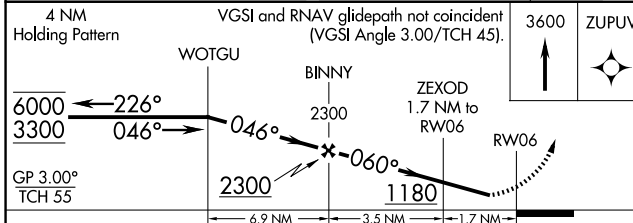
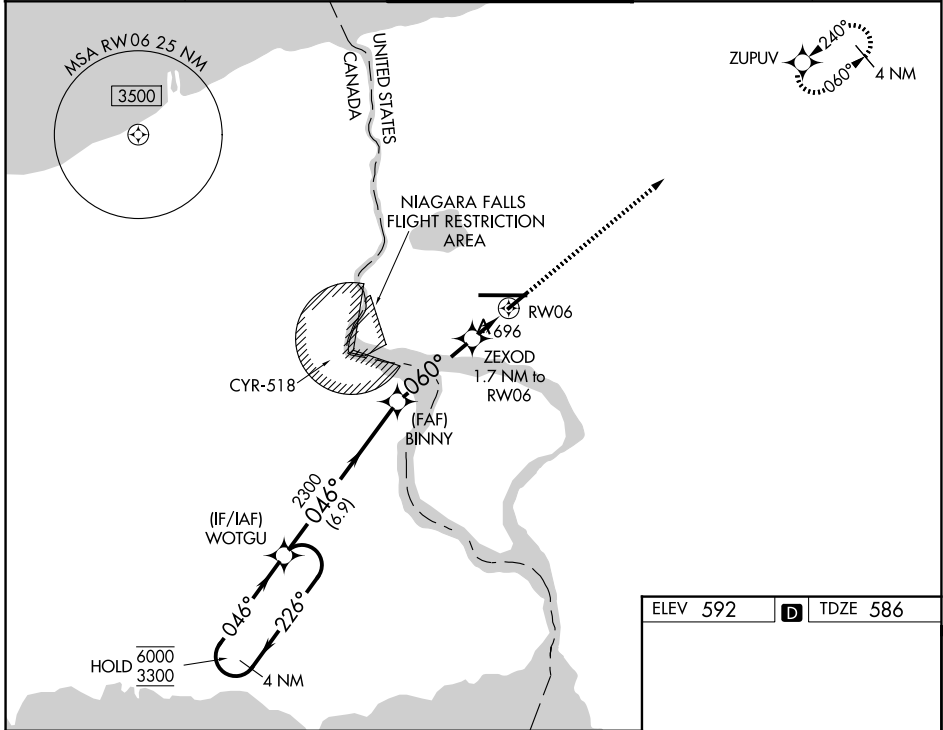
WAAS CH 90132 W06A	APP CRS 060°	Rwy Ldg TDZE Apt Elev	5188 586 592
--	------------------------	-----------------------------	---

RNAV (GPS) RWY 6

NIAGARA FALLS INTL (IAG)

RNP APCH - GPS.		<p>▼ For uncompensated Baro-VNAV systems, LNAV/VNAV NA below -17°C or above 54°C. ▲ Rwy 6 helicopter visibility reduction below 1 SM NA. Rwy 6 Straight-in and Circling minimums NA at night.</p>		<p>MISSED APPROACH: Climb to 3600 direct ZUPUV and hold, continue climb-in-hold to 3600.</p>	
-----------------	--	---	--	--	--

ATIS 120.8 269.4	BUFFALO APP CON 126.5 317.6	NIAGARA TOWER ★ 118.5 (CTAF) 0 349.0	GND CON 125.3 275.8	UNICOM 122.95
----------------------------	---------------------------------------	--	-------------------------------	-------------------------



NE-2, 16 APR 2026 to 14 MAY 2026

NE-2, 16 APR 2026 to 14 MAY 2026