

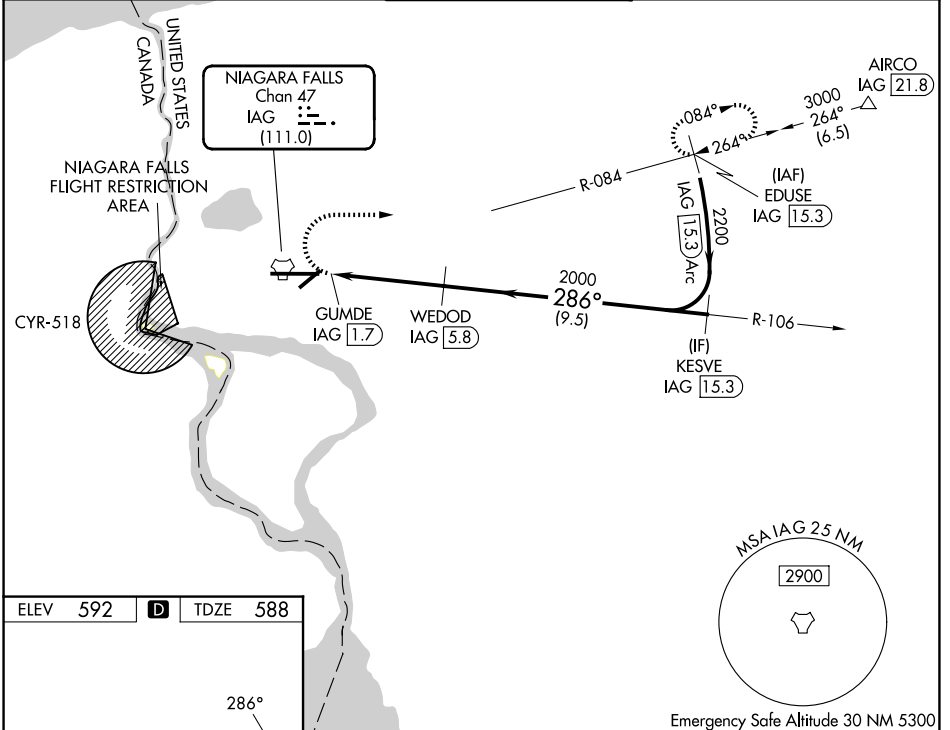
TACAN IAG Chan 47 (111.0)	APP CRS 286°	Rwy Ldg TDZE Apt Elev	9129 588 592
---	------------------------	-----------------------------	---

TACAN RWY 28

NIAGARA FALLS INTL (IAG)

<p>▼ Rwy 28 helicopter visibility reduction below RVR 4000 NA. Circling NA for Cat E southeast of Rwy 6-24. For inop ALS, increase visibility Cats A/B to RVR 5500, Cats C/D/E to 1$\frac{1}{2}$ SM.</p>	<p>MALSR</p>	<p>MISSED APPROACH: Climbing right turn to 3000 on heading 100° and IAG TACAN R-084 to EDUSE/IAG 15.3 DME and hold, continue climb-in-hold to 3000.</p>

ATIS 120.8 269.4	BUFFALO APP CON 126.5 317.6	NIAGARA TOWER ★ 118.5 (CTAF) 0 349.0	GND CON 125.3 275.8	UNICOM 122.95
----------------------------	---------------------------------------	--	-------------------------------	-------------------------



ELEV 592	D	TDZE 588
----------	----------	----------

REIL Rws 6 and 24 **1**
 TDZL/RCLS Rwy 28 **1**
 RCLS Rwy 10 **1**
 HIRL Rwy 10-28 **1**
 MIRL Rwy 6-24 **1**

3000	hdg 100°	IAG R-084	EDUSE IAG 15.3	VGS1 and descent angles not coincident (VGS1 Angle 2.50/TCH 67).	
IAG TACAN		GUMDE IAG 1.7	IAG 2.9	WEDOD IAG 5.8	KESVE IAG 15.3
0.5 NM		1.1 NM		3 NM	
0.5 NM		1.1 NM		3 NM	
CATEGORY	A	B	C	D	E
S-28	1080/40	492 (500- $\frac{3}{4}$)	1080/50	492 (500-1)	
CIRCLING	1100-1	508 (600-1)	1280-2 688 (700-2)	1280-2 $\frac{1}{4}$ 688 (700-2 $\frac{1}{4}$)	1280-2 $\frac{1}{2}$ 688 (700-2 $\frac{1}{2}$)

NE-2, 16 APR 2026 to 14 MAY 2026

NE-2, 16 APR 2026 to 14 MAY 2026