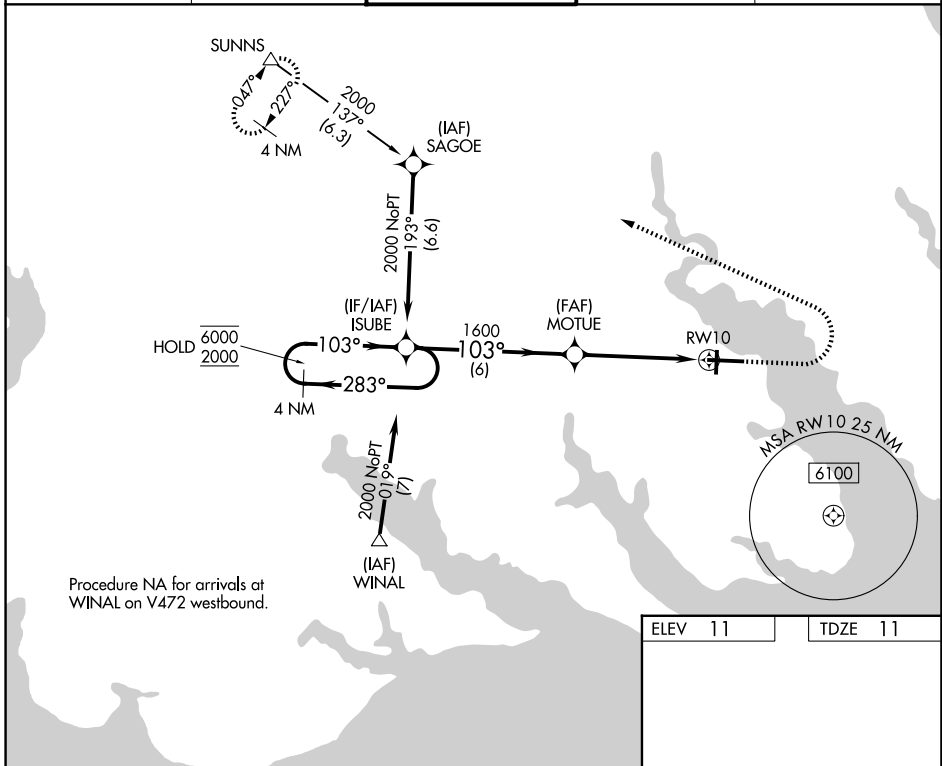


WAAS CH <b>65703</b> <b>W10A</b>	APP CRS <b>103°</b>	Rwy Ldg <b>7219</b> TDZE <b>11</b> Apt Elev <b>11</b>
--	------------------------	---

**RNAV (GPS) RWY 10**  
ELIZABETH CITY CG AIR STATION/RGNL (E/C/G)

RNP APCH - GPS.	SALS A2	MISSED APPROACH: Climb to 500 then climbing left turn 2000 direct SUNNS and hold.
<p>⚠ Circling Rwy 1 NA at night. Inop table does not apply to LPV.                  Procedure NA when tethered balloon located approximately 2 miles southeast of airport is flying.</p>		

ASOS <b>124.375</b>	NORFOLK APP CON <b>119.55 269.425</b>	ELIZABETH CITY TOWER★ <b>120.5 (CTAF) 355.6</b>	GND CON <b>121.9</b>	UNICOM <b>122.95</b>
------------------------	--	--	-------------------------	-------------------------

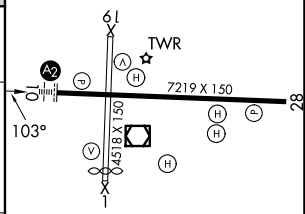
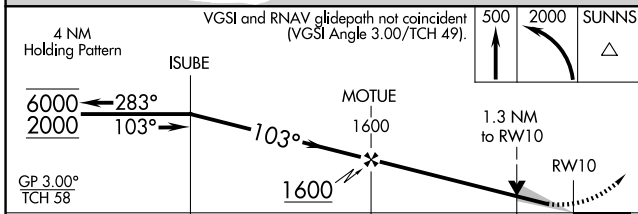


SE-2, 16 APR 2026 to 14 MAY 2026

SE-2, 16 APR 2026 to 14 MAY 2026

Procedure NA for arrivals at WINAL on V472 westbound.

ELEV 11	TDZE 11
---------	---------



CATEGORY	A	B	C	D
LPV DA	261-3/4		250 (300-3/4)	
LNNAV MDA	480-3/4	469 (500-3/4)	480-1 1/8	469 (500-1 1/8)
CIRCLING	480-1	469 (500-1)	640-1 3/4 629 (700-1 3/4)	640-2 629 (700-2)

MIRL Rwy 1-19  
HIRL Rwy 10-28  
REIL Rwy 10 and 28