

LOC I-FNT 109.9	APP CRS 094°	Rwy Ldg 7201 TDZE 771 Apt Elev 782
---------------------------	------------------------	---------------------------------------------------------------

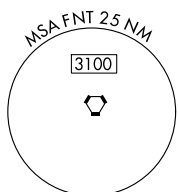
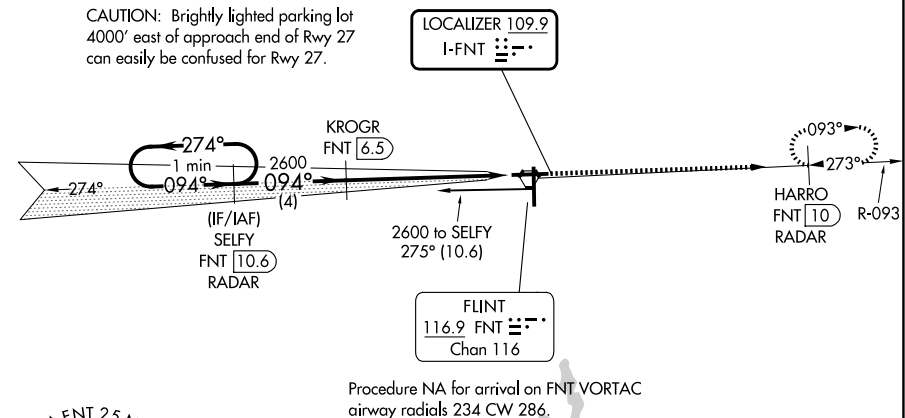
ILS or LOC RWY 9

BISHOP INTL (FNT)

DME or RADAR required for procedure entry. DME or RADAR required.		MALSR 	MISSED APPROACH: Climb to 3000 on FNT VORTAC R-093 to HARRO/FNT VORTAC 10 DME/RADAR and hold.
	DME from FNT VORTAC. Simultaneous reception of I-FNT and FNT DME required. For inop ALS, increase S-LOC 9 Cat C/D visibility to 1 3/8 SM. ** RVR 1800 authorized with use of FD or AP or HUD to DA.		

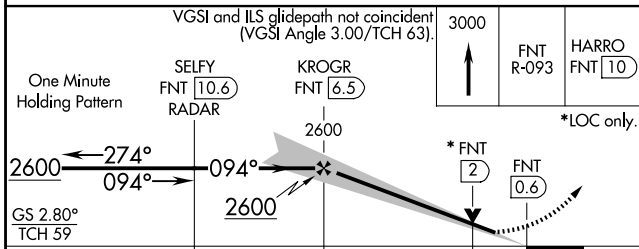
ATIS 133.15	GREAT LAKES APP CON * 118.8 257.9	FLINT TOWER * 126.3 (CTAF) 257.9	GND CON 121.9	UNICOM 122.95
-----------------------	---------------------------------------------	--------------------------------------------	-------------------------	-------------------------

CAUTION: Brightly lighted parking lot 4000' east of approach end of Rwy 27 can easily be confused for Rwy 27.

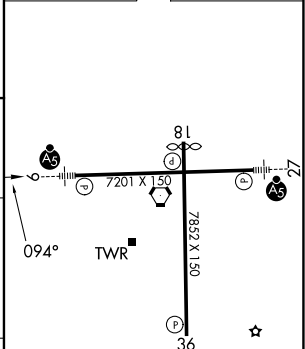


EC-1, 16 APR 2026 to 14 MAY 2026

EC-1, 16 APR 2026 to 14 MAY 2026



ELEV 782	D TDZE 771
----------	-------------------



CATEGORY	A	B	C	D
S-ILS 9 **	971/24 200 (200-1/2)			
S-LOC 9	1280/24	509 (500-1/2)	1280/55	509 (500-1)
CIRCLING	1280-1 498 (500-1)	1300-1 518 (600-1)	1300-1 1/2 518 (600-1 1/2)	1520-2 1/4 738 (800-2 1/4)

HIRL Rwy 9-27 and 18-36	D
REIL Rwy 18 and 36	D
FAF to MAP 6 NM	
Knots	60 90 120 150 180
Min:Sec	6:00 4:00 3:00 2:24 2:00