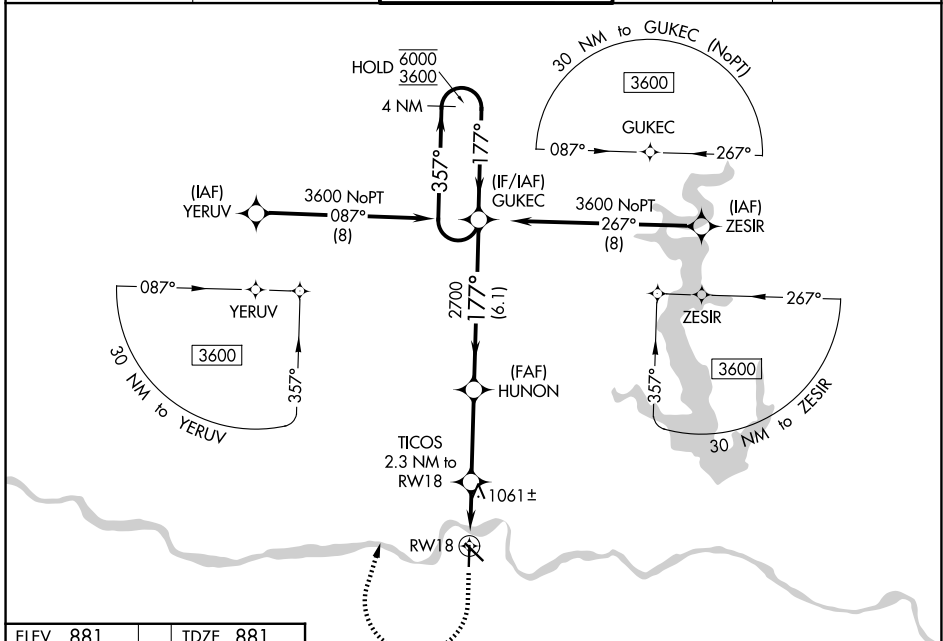


WAAS CH 53634 W18A	APP CRS 177°	Rwy Ldg TDZE Apt Elev	4331 881 881
--	------------------------	-----------------------------	---

RNAV (GPS) RWY 18

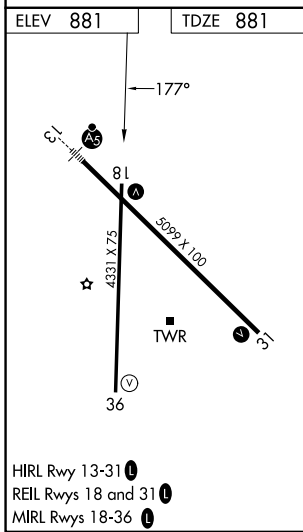
PHILIP BILLARD MUNI (TOP)

RNP APCH. ▼ Rwy 18 helicopter visibility reduction below 3/4 SM NA. For uncompensated Baro-VNAV systems, LNAV/VNAV NA below -19°C or above 54°C.		MISSED APPROACH: Climb to 1500 then climbing right turn to 3600 direct GUKEC and hold.	
ASOS 121.275	KANSAS CITY CENTER 123.8 343.7	TOPEKA TOWER * 118.7 0 (CTAF) 257.8	GND CON 121.9
		UNICOM 122.95	



NC-2, 16 APR 2026 to 14 MAY 2026

NC-2, 16 APR 2026 to 14 MAY 2026



1500	3600	GUKEC	GUKEC	4 NM Holding Pattern
*LNAV only	TICOS 2.3 NM to RW18	HUNON 2700	GUKEC	4 NM Holding Pattern
RW18	*1.3 NM to RW18	1640*	177°	357° → 6000 ← 177° 3600
1.3 NM	1 NM	3.3 NM	6.1 NM	GP 3.00° TCH 35
CATEGORY	A	B	C	D
LPV DA	1174-1 293 (300-1)			NA
LNAV/VNAV DA	1340-1½ 459 (500-1½)			NA
LNAV MDA	1320-1 439 (500-1)	1320-1¼ 439 (500-1¼)		NA
CIRCLING	1360-1 479 (500-1)	1440-1 559 (600-1)	1600-2 719 (800-2)	NA