

LOC/DME I-BDR 110.7 Chan 44	APP CRS 060°	Rwy Ldg TDZE Apt Elev	4677 7 9
--	------------------------	-----------------------------	-------------------------------------

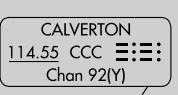
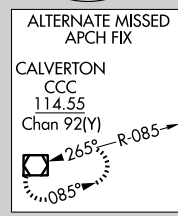
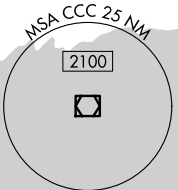
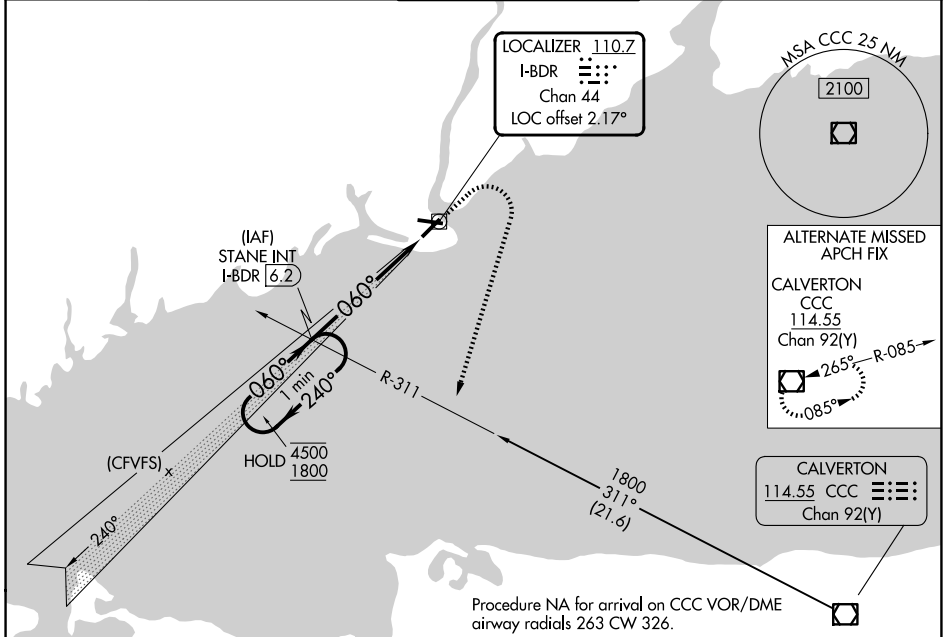
ILS or LOC RWY 6

BRIDGEPORT/SIKORSKY (BDR)

⚠ Circling to Rwy 11, 29 NA at night. Rwy 6 helicopter visibility reduction below ¼ SM NA. Autopilot coupled approach NA below 350.

⚠ MISSED APPROACH: Climb to 500 then climbing right turn to 1800 on heading 210° and CCC VOR/DME R-311 to STANE INT/I-BDR 6.2 DME and hold, continue climb-in-hold to 1800.

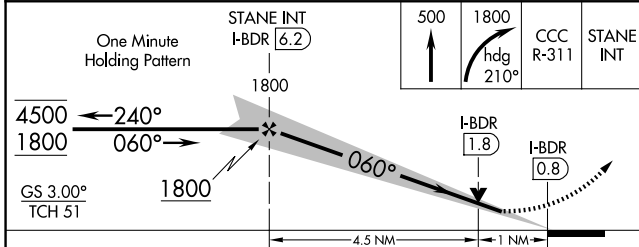
ATIS 119.15	NEW YORK APP CON 124.075 343.65	BRIDGEPORT TOWER★ 120.9 (CTAF) 257.8	GND CON 121.75 257.8	UNICOM 123.0
-----------------------	---	---	--------------------------------	------------------------



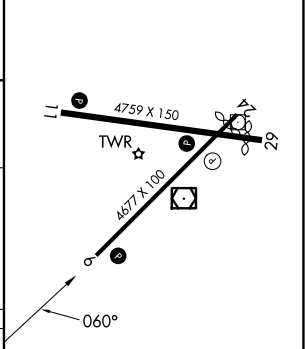
Procedure NA for arrival on CCC VOR/DME airway radials 263 CW 326.

NE-1, 16 APR 2026 to 14 MAY 2026

NE-1, 16 APR 2026 to 14 MAY 2026



ELEV	9	D	TDZE	7
------	---	---	------	---



CATEGORY	A	B	C	D
S-ILS 6		257-1	250 (300-1)	
S-LOC 6		380-1	373 (400-1)	
CIRCLING	480-1 471 (500-1)	620-1 611 (700-1)	820-2½ 811 (900-2½)	820-2¾ 811 (900-2¾)

REIL Rwy 6, 11, 24, and 29	
HIRL Rwy 6-24 and 11-29	
FAF to MAP 5.5 NM	
Knots	60 90 120 150 180
Min:Sec	5:30 3:40 2:45 2:12 1:50