

WAAS CH <b>49047</b> <b>W24A</b>	APP CRS <b>238°</b>	Rwy Ldg TDZE Apt Elev	<b>4357</b> <b>7</b> <b>9</b>
--	------------------------	-----------------------------	-------------------------------------

# RNAV (GPS) RWY 24

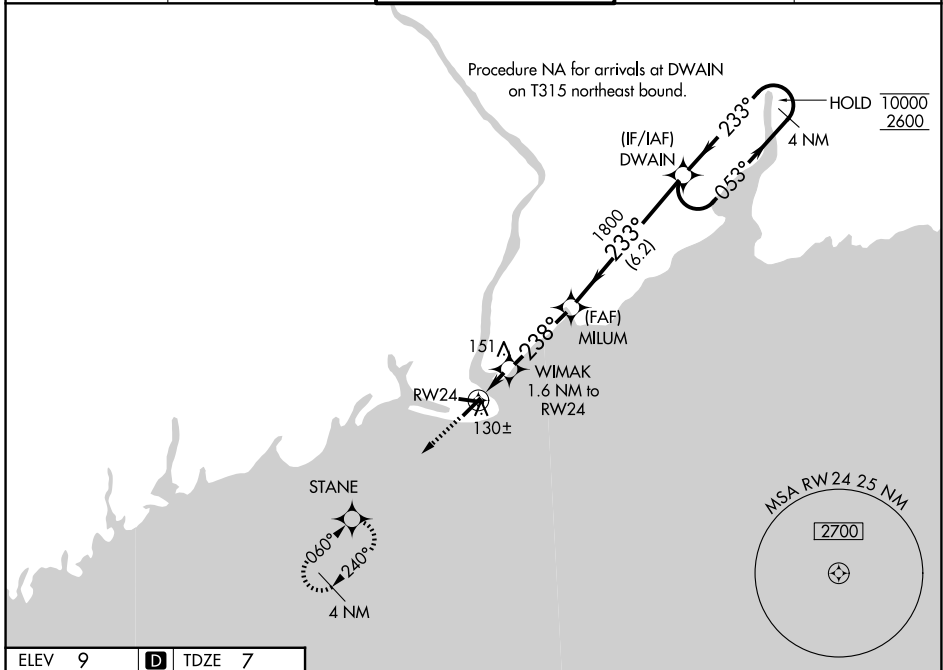
BRIDGEPORT/SIKORSKY (BDR)

RNP APCH - GPS.

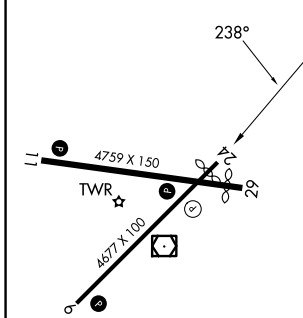
**⚠** Circling to Rwy 11, 29 NA at night. Rwy 24 helicopter visibility reduction below 3/4 SM NA. For uncompensated Baro-VNAV systems, LNAV/VNAV NA below -1.4°C or above 47°C.

**MISSED APPROACH:** Climb to 500, then climb to 1800 direct STANE and hold, continue climb-in-hold 1800.

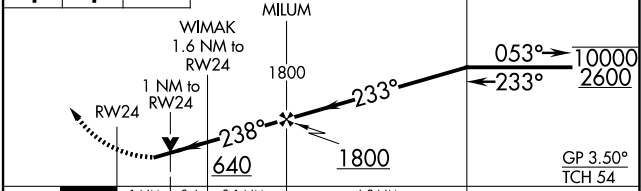
ATIS <b>119.15</b>	NEW YORK APP CON <b>124.075 343.65</b>	BRIDGEPORT TOWER* <b>120.9</b> (CTAF) <b>257.8</b>	GND CON <b>121.75 257.8</b>	UNICOM <b>123.0</b>
-----------------------	---	---	--------------------------------	------------------------



ELEV <b>9</b>	<b>D</b>	TDZE <b>7</b>
---------------	----------	---------------



500 1800 STANE VGSI and RNAV glidepath not coincident (VGSI Angle 3.00/TCH 52). 4 NM Holding Pattern



CATEGORY	A	B	C	D
LPV DA		301-1	294 (300-1)	
LNAV/VNAV DA		311-1	304 (400-1)	
LNAV MDA		380-1	373 (400-1)	
CIRCLING	480-1 471 (500-1)	620-1 611 (700-1)	820-2½ 811 (900-2½)	820-2¾ 811 (900-2¾)

REIL Rwy 6, 11, 24, and 29 **Ⓛ**  
HIRL Rwy 6-24 and 11-29 **Ⓛ**