

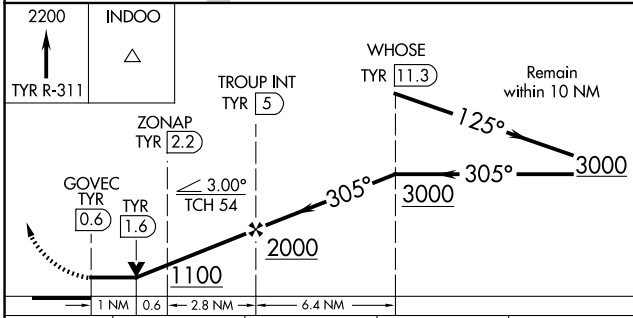
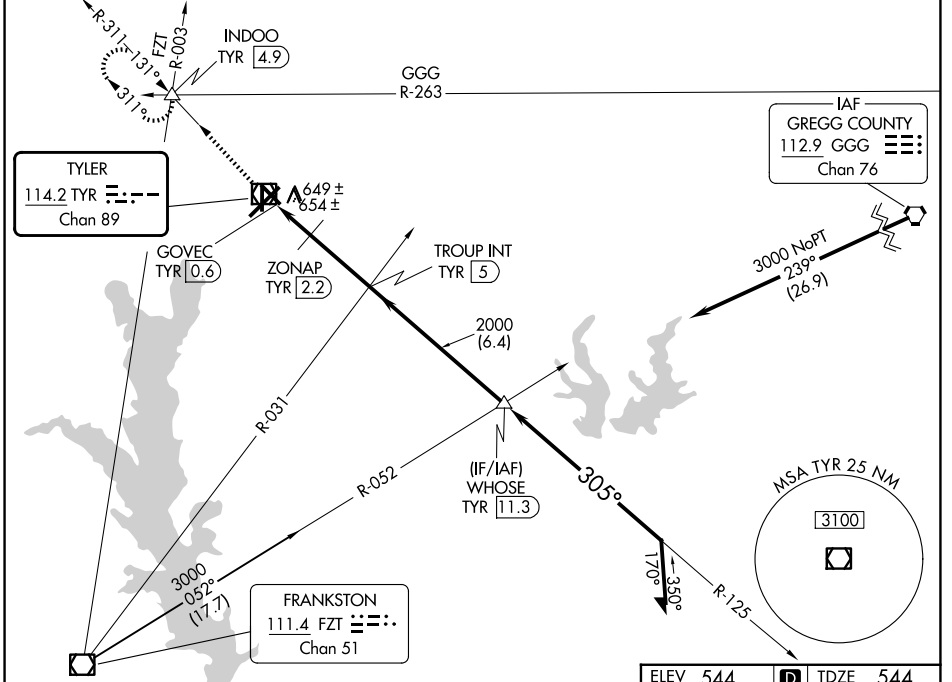
VOR/DME TYR	APP CRS	Rwy Ldg	5198
114.2	305°	TDZE	544
Chan 89		Apt Elev	544

VOR RWY 31

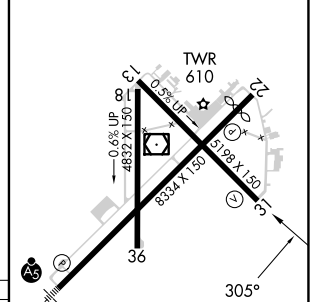
TYLER POUNDS RGNL (TYR)

▼ Rwy 31 helicopter visibility reduction below 3/4 SM NA. **▲** MISSED APPROACH: Climb to 2200 on TYR VOR/DME R-311 to INDOO INT/4.9 DME and hold.

ATIS 126.25	LONGVIEW APP CON ★ 128.75 379.15	POUNDS TOWER ★ 120.1 (CTAF) 257.8	GND CON 121.9	UNICOM 122.95
-----------------------	--	---	-------------------------	-------------------------



ELEV 544 **D** TDZE 544



CATEGORY	A	B	C	D
S-31	1100-1	556 (600-1)	1100-1 1/2	556 (600-1 1/2)
CIRCLING	1100-1	556 (600-1)	1160-1 1/4 616 (700-1 1/4)	1280-2 1/4 736 (800-2 1/4)
ZONAP FIX MINIMUMS (DME REQUIRED)				
S-31	920-1 376 (400-1)			
CIRCLING	980-1 436 (500-1)	1020-1 476 (500-1)	1160-1 1/4 616 (700-1 1/4)	1280-2 1/4 736 (800-2 1/4)

REIL Rwy 22	1
MRL Rwy 18-36	1
HIRL Rwy 4-22 and 13-31	1
FAF to MAP 4.4 NM	
Knots	60 90 120 150 180
Min:Sec	4:24 2:56 2:12 1:46 1:28

SC-2, 16 APR 2026 to 14 MAY 2026

SC-2, 16 APR 2026 to 14 MAY 2026