

WAAS CH 70607 W 13A	APP CRS 129°	Rwy Idg 7202 TDZE 607 Apt Elev 612
---	------------------------	---

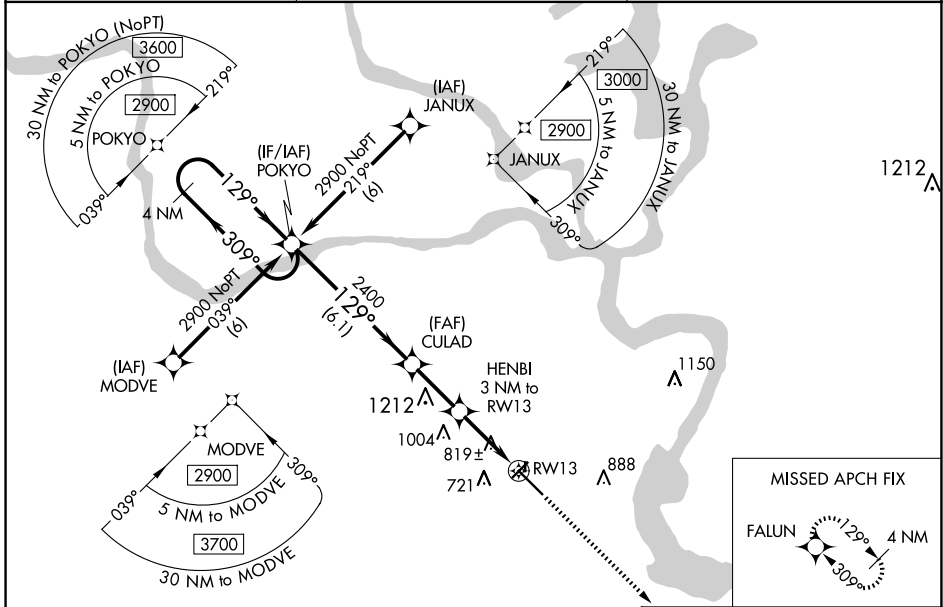
RNAV (GPS) RWY 13

MUSKOGEE-DAVIS RGNL (MKO)

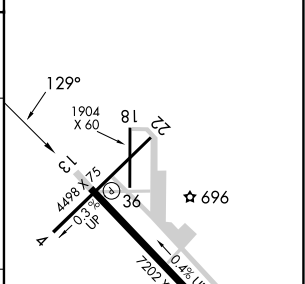
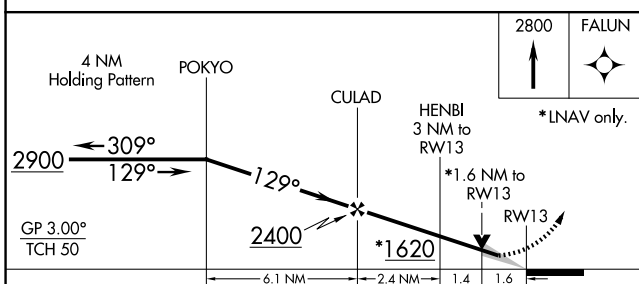
▼ For uncompensated Baro-VNAV systems, procedure NA below -16°C (4°F) or above 47°C (116°F).
▲ DME/DME RNP-0.3 NA. Baro-VNAV and VDP NA when using Tahlequah altimeter setting. When local altimeter setting not received, use Tahlequah altimeter setting: increase LPV DA to 948, LNAV/VNAV DA to 1233, and visibility LPV all Cats ½ SM and LNAV/VNAV all Cats ¼ SM; increase all MDA 100 feet and visibility LNAV Cat C/D/E and Circling Cat D ½ SM, and Circling Cat C ¼ SM. Circling Rwy 4, 18, 22, 36 NA at night. Rwy 4, 18, 22, 36 helicopter visibility reduction below 1 SM NA.

MISSED APPROACH:
Climb to 2800 direct FALUN and hold.

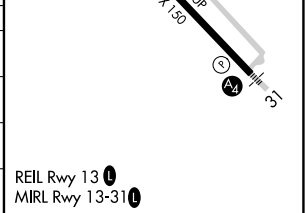
ASOS 135.025	FORT WORTH CENTER 132.2 338.35	UNICOM 122.8 (CTAF) 0
------------------------	--	---------------------------------



ELEV 612	TDZE 607
----------	----------



CATEGORY	A	B	C	D	E
LPV DA	857-¾		250 (300-¾)		
LNAV/VNAV DA	1142-2		535 (600-2)		
LNAV MDA	1180-1	573 (600-1)	1180-1½ 573 (600-1½)	1180-1¾ 573 (600-1¾)	1180-2 573 (600-2)
CIRCLING	1180-1	568 (600-1)	1320-2 708 (800-2)	1400-2½ 788 (800-2½)	1580-3 968 (1000-3)



SC-1, 16 APR 2026 to 14 MAY 2026

SC-1, 16 APR 2026 to 14 MAY 2026