

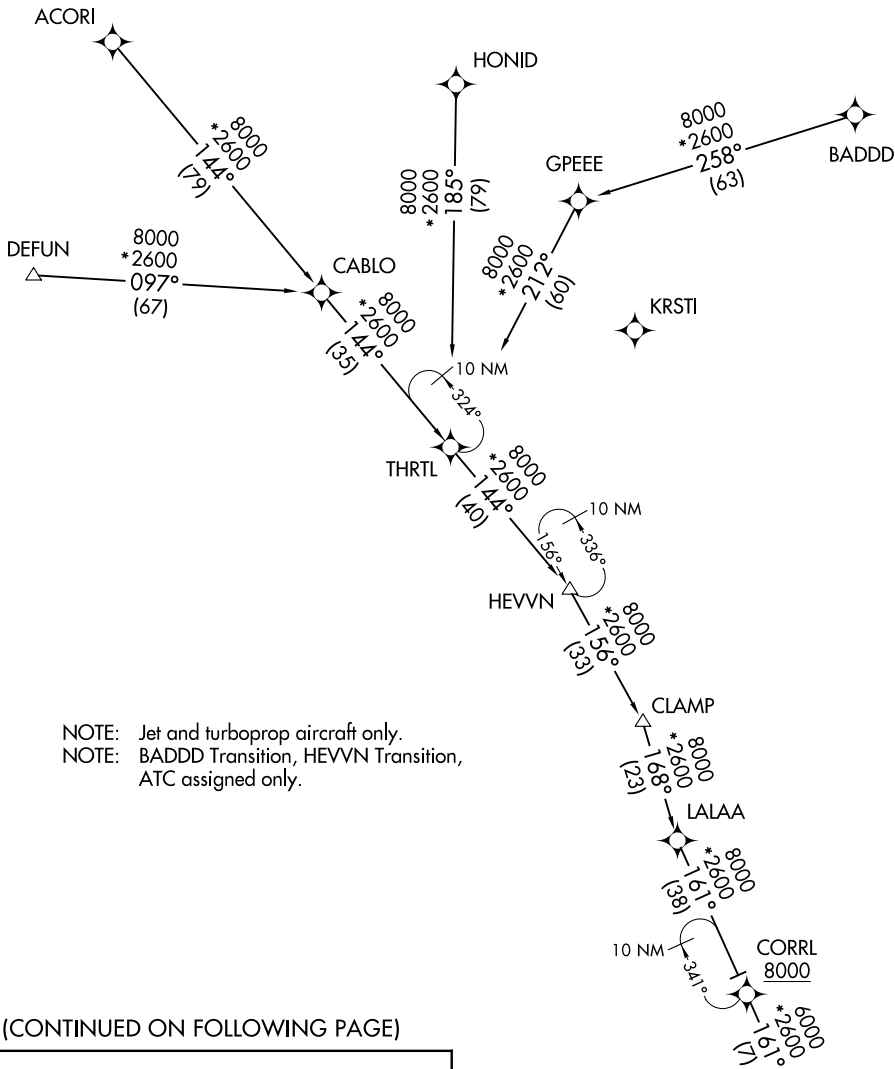
BANGZ TWO ARRIVAL (RNAV)

ST PETERSBURG-CLEARWATER, FLORIDA

RNAV 1 - DME/DME/IRU or GPS.

RADAR required.

TAMPA APP CON
118.8 239.3
PIE ATIS
134.5
SRQ ATIS
124.375



NOTE: Jet and turboprop aircraft only.
NOTE: BADD Transition, HEVVN Transition, ATC assigned only.

(CONTINUED ON FOLLOWING PAGE)

- ACORI TRANSITION (ACORI.BANGZ2)
- BADD TRANSITION (BADD.BANGZ2)
- DEFUN TRANSITION (DEFUN.BANGZ2)
- HEVVN TRANSITION (HEVVN.BANGZ2)
- HONID TRANSITION (HONID.BANGZ2)

BANGZ
13000
7000

See following page for arrival routes.

NOTE: Chart not to scale.

SE-3, 16 APR 2026 to 14 MAY 2026

SE-3, 16 APR 2026 to 14 MAY 2026

(BANGZ.BANGZ2) 25331

AL-625 (FAA)

Arrival Routes

BANGZ TWO ARRIVAL (RNAV)

ST PETERSBURG-CLEARWATER, FLORIDA

RNAV 1 - DME/DME/IRU or GPS.

RADAR required.

TAMPA APP CON

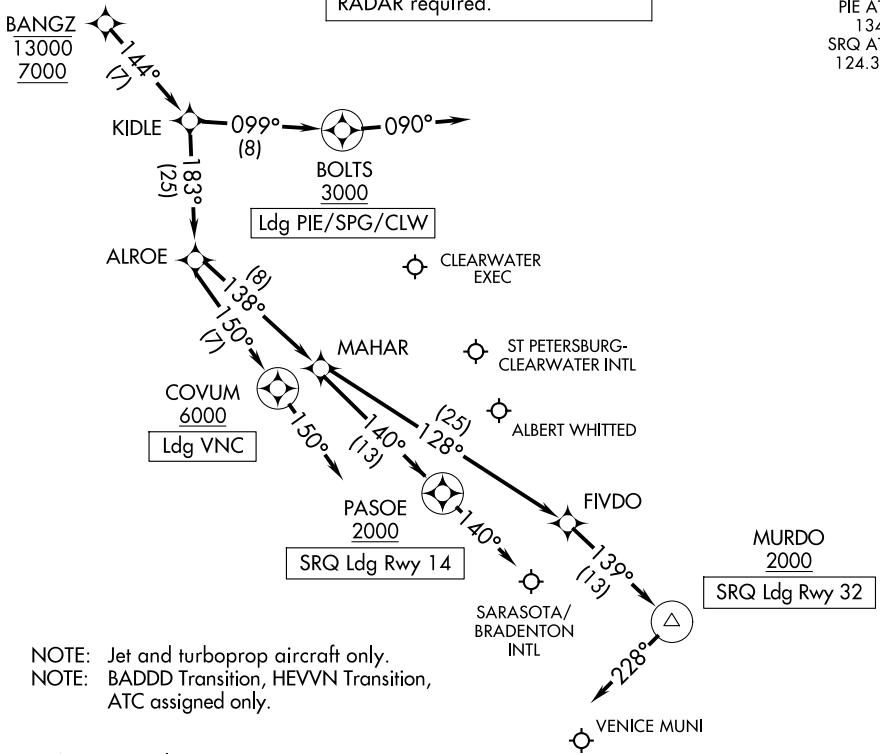
118.8 239.3

PIE ATIS

134.5

SRQ ATIS

124.375



NOTE: Jet and turboprop aircraft only.
 NOTE: BADD Transition, HEVVN Transition, ATC assigned only.

NOTE: Chart not to scale.

ARRIVAL ROUTE DESCRIPTION

LANDING SRQ RUNWAY 14: From BANGZ on track 144° to KIDLE, then on track 183° to ALROE, then on track 138° to MAHAR, then on track 140° to cross PASOE at or above 2000, then on track 140°. Expect RADAR vectors to final approach course.

LANDING SRQ RUNWAY 32: From BANGZ on track 144° to KIDLE, then on track 183° to ALROE, then on track 138° to MAHAR, then on track 128° to FIVDO, then on track 139° to cross MURDO at or above 2000, then on track 228°. Expect RADAR vectors to final approach course.

LANDING PIE/CLW/SPG: From BANGZ on track 144° to KIDLE, then on track 099° to cross BOLTS at or above 3000, then on track 090°. Expect RADAR vectors to final approach course.

LANDING VNC: From BANGZ on track 144° to KIDLE, then on track 183° to ALROE, then on track 150° to cross COVUM at or above 6000, then on track 150°. Expect RADAR vectors to final approach course.

BANGZ TWO ARRIVAL (RNAV)

ST PETERSBURG-CLEARWATER, FLORIDA

(BANGZ.BANGZ2) 17APR25

Arrival Routes

SE-3, 16 APR 2026 to 14 MAY 2026

SE-3, 16 APR 2026 to 14 MAY 2026