

(BAYPO2.BAYPO) 25219

AL-625 (FAA)

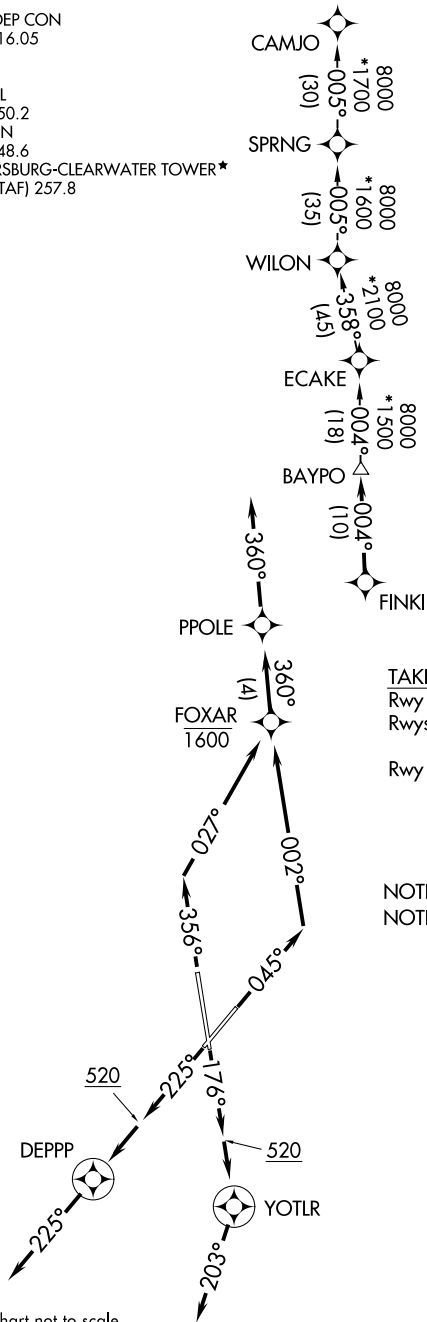
ST PETE-CLEARWATER INTL (PIE)
ST PETERSBURG-CLEARWATER, FLORIDA

BAYPO TWO DEPARTURE (RNAV)

TAMPA DEP CON
125.3 316.05
ATIS
134.5
CLNC DEL
120.6 350.2
GND CON
121.9 348.6
ST. PETERSBURG-CLEARWATER TOWER*
118.3 (CTAF) 257.8

**TOP ALTITUDE:
1600**

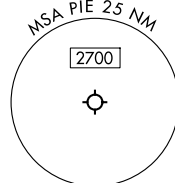
RNAV 1 - DME/DME/IRU or GPS required.
RADAR required.



TAKEOFF MINIMUMS

Rwy 18: Standard.
Rwys 4, 36: Standard with minimum climb of 500'/NM to 520.
Rwy 22: Standard with minimum climb of 230'/NM to 300.

NOTE: Jet aircraft only.
NOTE: WILON Transition for use by aircraft filed to Jacksonville area airports only, or as assigned by ATC.



NOTE: Chart not to scale.

(CONTINUED ON FOLLOWING PAGE)

BAYPO TWO DEPARTURE (RNAV)
(BAYPO2.BAYPO) 16MAY24

ST PETERSBURG-CLEARWATER, FLORIDA
ST PETE-CLEARWATER INTL (PIE)

SE-3, 16 APR 2026 to 14 MAY 2026

SE-3, 16 APR 2026 to 14 MAY 2026

BAYPO TWO DEPARTURE (RNAV)



DEPARTURE ROUTE DESCRIPTION

TAKEOFF RUNWAY 4: Climb on heading 045° to intercept course 002° to cross FOXAR at or below 1600, then on track 360° to PPOLE, then on track 360° for vectors to FINKI, thence

TAKEOFF RUNWAY 18: Climb on heading 176° to 520, then direct YOTLR, then on heading 203° for vectors to FINKI, thence

TAKEOFF RUNWAY 22: Climb on heading 225° to 520, then direct DEPPP, then on heading 225° for vectors to FINKI, thence

TAKEOFF RUNWAY 36: Climb on heading 356° to intercept course 027° to cross FOXAR at or below 1600, then on track 360° to PPOLE, then on track 360° for vectors to FINKI, thence

. . . . on track 004° to BAYPO. Maintain 1600. Expect clearance to filed altitude within ten minutes after departure.

CAMJO TRANSITION (BAYPO2.CAMJO)

WILON TRANSITION (BAYPO2.WILON)

SE-3, 16 APR 2026 to 14 MAY 2026

SE-3, 16 APR 2026 to 14 MAY 2026