

VORTAC PIE	APP CRS	Rwy Ldg	6000
<b>116.4</b>	<b>039°</b>	TDZE	<b>11</b>
Chan <b>111</b>		Apt Elev	<b>11</b>

# VOR RWY 4

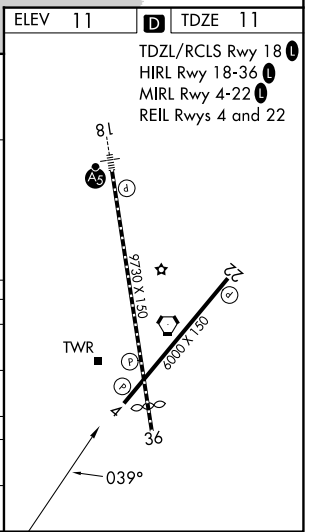
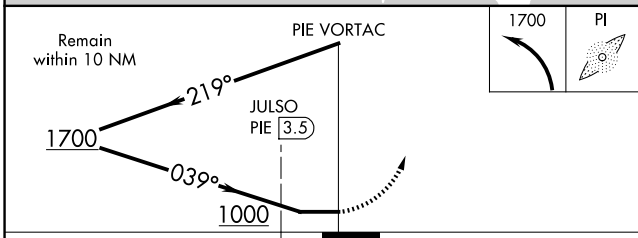
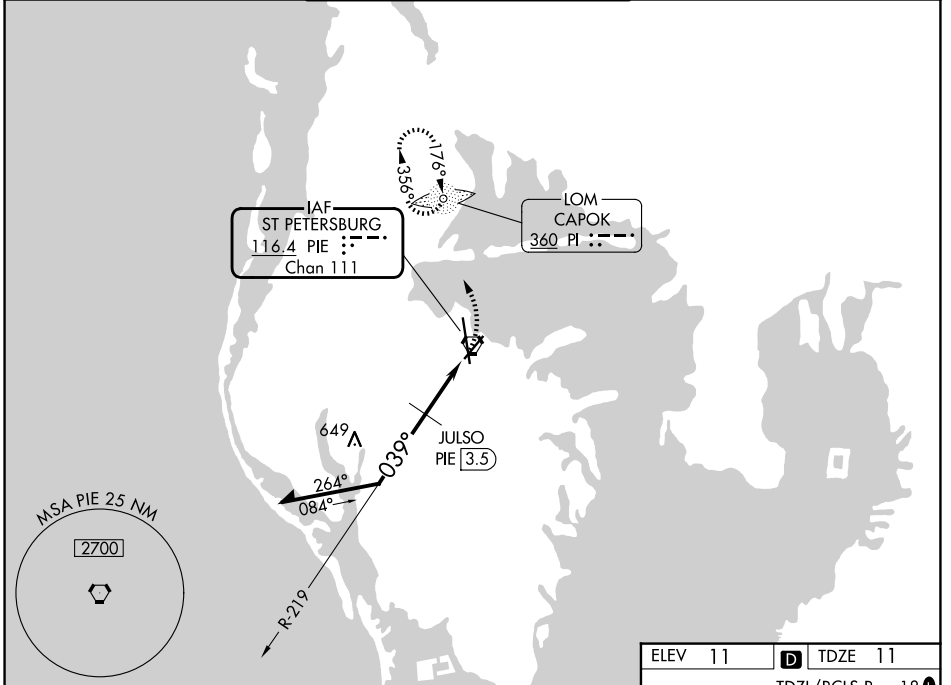
ST PETE-CLEARWATER INTL (PIE)

ADF required.

When local altimeter setting not received, use Tampa Intl altimeter setting and increase all MDA's 40 feet; JULSO fix minimums: increase Circling Cat C/D visibility ¼ SM. Helicopter visibility reduction below ¾ SM NA.

MISSED APPROACH: Climbing left turn to 1700 direct CAPOK LOM and hold.

ATIS	TAMPA APP CON	ST PETERSBURG-CLEARWATER TOWER *	GND CON	UNICOM
<b>134.5</b>	<b>125.3 316.05</b>	<b>118.3 (CTAF) 257.8</b>	<b>121.9 348.6</b>	<b>122.95</b>



CATEGORY	A	B	C	D
S-4	1000-1¼ 989 (1000-1¼)	1000-1½ 989 (1000-1½)	1000-3	989 (1000-3)
CIRCLING	1000-1¼ 989 (1000-1¼)	1000-1½ 989 (1000-1½)	1000-3	989 (1000-3)
JULSO FIX MINIMUMS				
S-4	480-1	469 (500-1)	480-1¾	469 (500-1¾)
CIRCLING	520-1	509 (600-1)	600-1½ 589 (600-1½)	620-2 609 (700-2)

SE-3, 16 APR 2026 to 14 MAY 2026

SE-3, 16 APR 2026 to 14 MAY 2026