

HI-TACAN Y RWY 4

VORTAC HRV 114.1 Chan 88	APCH CRS 046°	Rwy Idg 10,000 TDZE Arprt Elev -2
--	-------------------------	---

[USN]

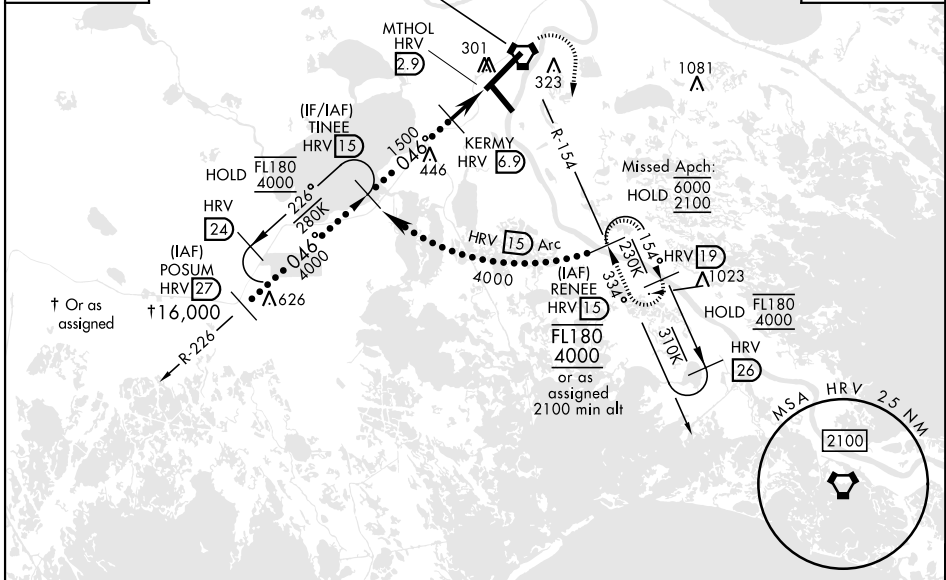
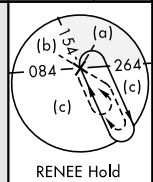
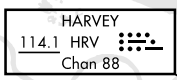
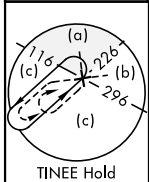
NEW ORLEANS NAS JRB (ALVIN CALLENDER FLD) (KNBG)

⚠ * When ALS inop, increase CAT CDE vis to 1¾ miles.
 ** Circling not authorized for CAT E NW of Rwy 4-22.



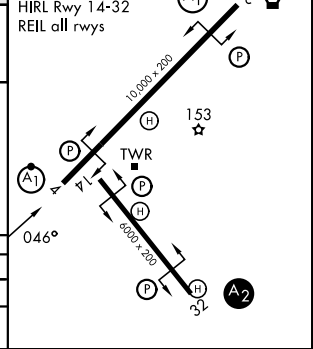
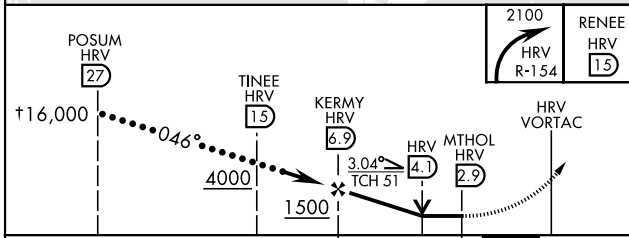
MISSED APPROACH: Climbing right turn to 2100, intercept HRV VORTAC R-154 to RENEÉ and hold.

ATIS★ 279.55	APP CON 123.85 256.9	NAVY NEW ORLEANS TOWER★ 123.8 340.2 (CTAF)	GND CON 121.6 270.35	ASR/ PAR
------------------------	--------------------------------	--	--------------------------------	-------------



ELEV 2	TDZE -2
---------------	----------------

HIRL Rwy 4-22 ⚠★
 HIRL Rwy 14-32
 REIL all rwy's



CATEGORY	C	D	E
S-4*	600-1¾	602	(600-1¾)
CIRCLING**	640-1¾ 638 (700-1¾)	660-2 658 (700-2)	680-2 ½ 678 (700-2½)

HI-TACAN Y RWY 4

SC-4, 16 APR 2026 to 14 MAY 2026

SC-4, 16 APR 2026 to 14 MAY 2026