

ILS or LOC/DME RWY 4

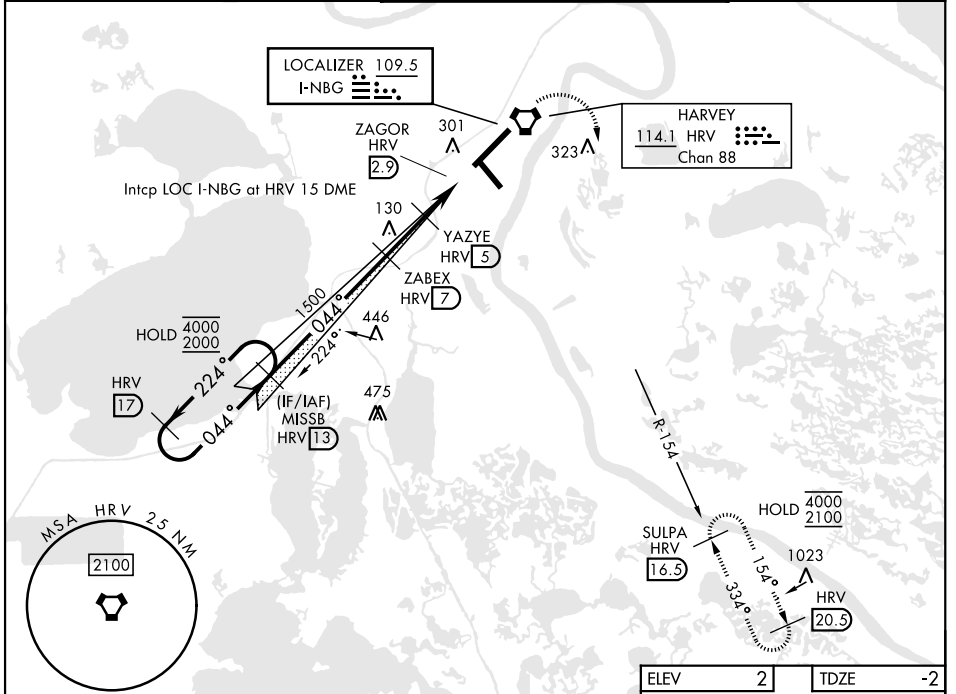
NEW ORLEANS NAS JRB
(ALVIN CALLENDER FLD) (KNBG)

LOC I-NBG 109.5	APCH CRS 044°	Rwy Idg 10,000 TDZE Arpt Elev -2	[USN]
---------------------------	-------------------------	--	-------

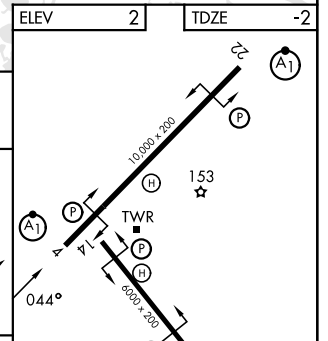
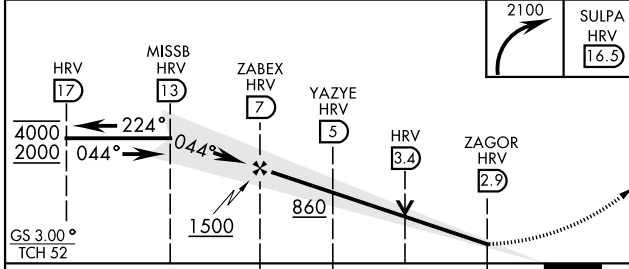
* When ALS inop, increase vis to 3/4 mile.
 ** When ALS inop, increase CAT AB vis to 1 mile; CAT CDE vis to 1 1/8 miles.
 *** Circling not authorized for CAT E NW of Rwy 4-22.

ALSF-1 MISSED APPROACH: Climbing right turn to 2100 direct SULPA and hold.

ATIS* 279.55	APP CON 123.85 256.9	NAVY NEW ORLEANS TOWER* 123.8 340.2 (CTAF)	GND CON 121.6 270.35	ASR/PAR
------------------------	--------------------------------	--	--------------------------------	---------



EMERG SAFE ALT 100 NM 3000



CATEGORY	A	B	C	D	E
S-ILS 4 *	198-1/2		200	(200-1/2)	
S-LOC 4 **	380-1/2	382 (400-1/2)	380-5/8	382	(400-3/4)
CIRCLING ***	640-1	638 (700-1)	640-13/4	660-2	680-2 1/2
			638 (700-13/4)	658 (700-2)	678 (700-2 1/2)

Knots	FAF to MAP 4.1 NM				
	60	90	120	150	180
Min:Sec	4:06	2:44	2:03	1:38	1:22

NEW ORLEANS, LOUISIANA 29°50'N-90°02'W NEW ORLEANS NAS JRB (KNBG)
Amdt 4 04SEP25 (ALVIN CALLENDER FLD)

ILS or LOC/DME RWY 4

SC-4, 16 APR 2026 to 14 MAY 2026

SC-4, 16 APR 2026 to 14 MAY 2026