

NEW ORLEANS, LOUISIANA

RNAV (GPS) RWY 14

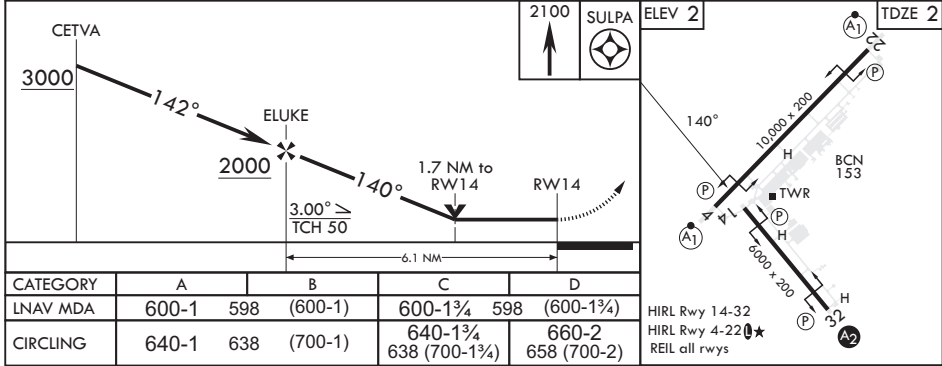
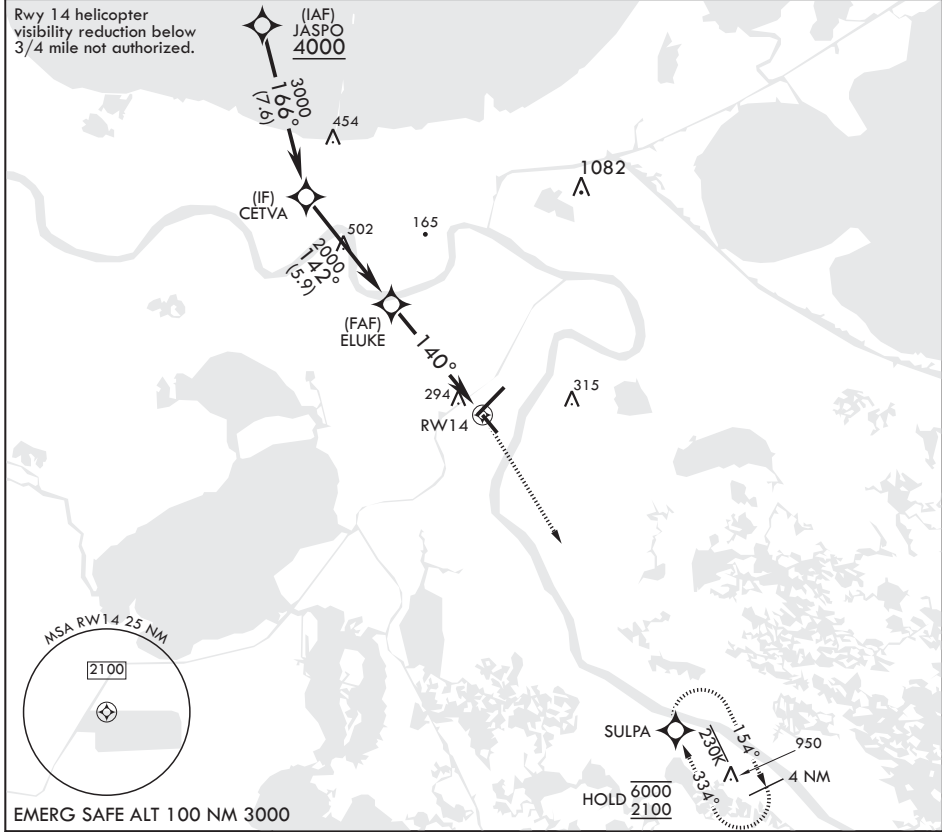
-(USN)

NEW ORLEANS NAS JRB (ALVIN CALLENDER FLD) (KNBG)

APCH CRS	Rwy Idg	6000
140°	TDZE	2
	Arpt Elev	2

RNP APCH-GPS	MISSED APPROACH: Climbing right turn to 2100 direct SULPA and hold.
--------------	---

ATIS*	APP CON/DEP CON	NAVY NEW ORLEANS TOWER*	GND CON	CLNC DEL	ASR/PAR
279.55	123.85 256.9	123.8 0 340.2 (CTAF)	121.6 270.35	128.35 263.0	



CATEGORY	A	B	C	D
LNAV MDA	600-1	598 (600-1)	600-1¾	598 (600-1¾)
CIRCLING	640-1	638 (700-1)	640-1¾	660-2
			638 (700-1¾)	658 (700-2)

HIRL Rwy 14-32
HIRL Rwy 4-22★
REIL all rwy's

NEW ORLEANS, LOUISIANA

29°50'N - 90°02'W NEW ORLEANS NAS JRB (ALVIN CALLENDER FLD) (KNBG)

Amdt 3 10JUL25

RNAV (GPS) RWY 14

SC-4, 16 APR 2026 to 14 MAY 2026

SC-4, 16 APR 2026 to 14 MAY 2026