

NEW ORLEANS, LOUISIANA

RNAV (GPS) RWY 32

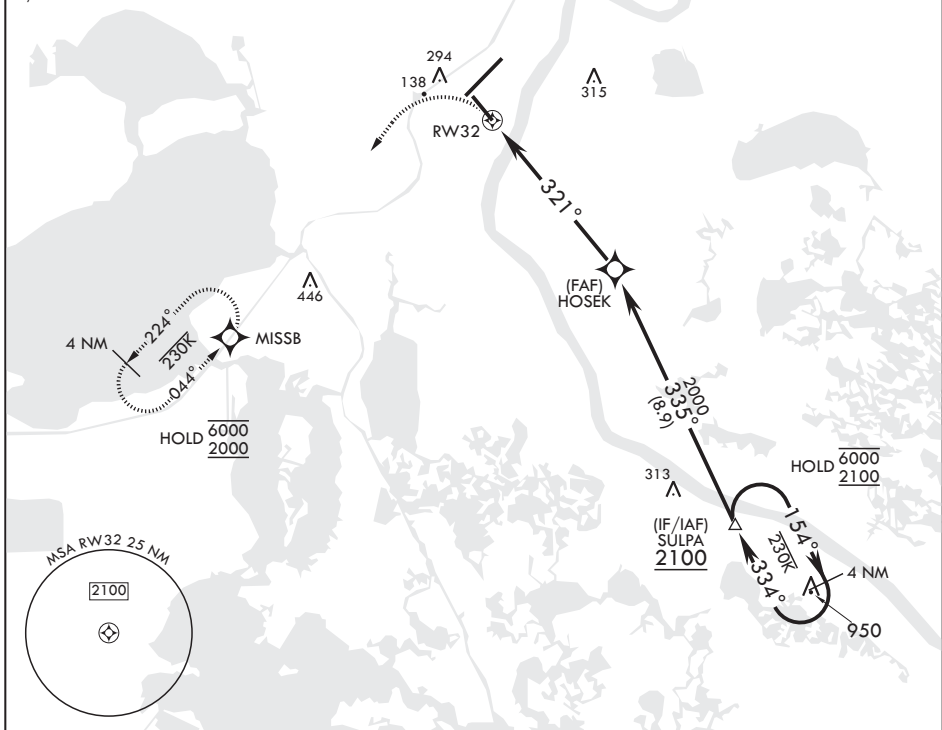
- (USN)
NEW ORLEANS NAS JRB (ALVIN CALLENDER FLD) (KNBG)

APCH CRS	Rwy Idg	6000
321°	TDZE	2
	Arprt Elev	2

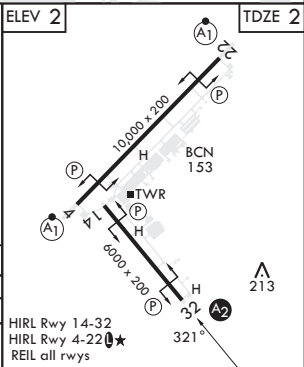
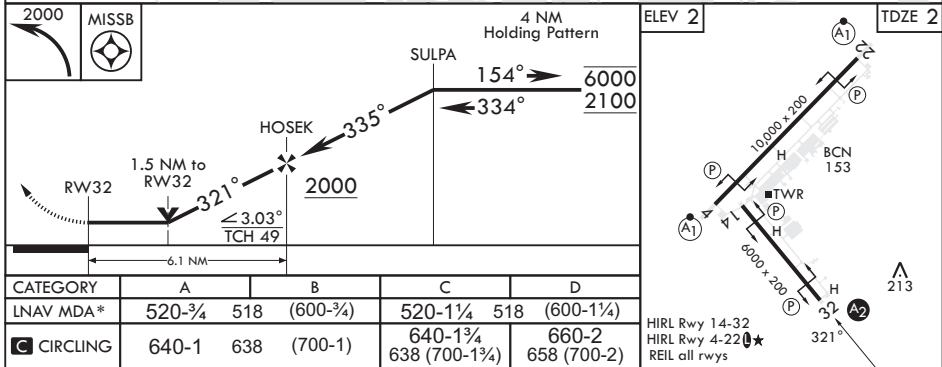
RNP APCH-GPS	SALS	MISSED APPROACH: Climbing left turn to 2000 direct MISSB and hold.
▼ * When ALS inop, increase CAT AB vis to 1 mile; CAT CD vis to 1 3/8 miles.		

ATIS* 279.55	APP CON/DEP CON 123.85 256.9	NAVY NEW ORLEANS TOWER* 123.8 (M) 340.2 (CTAF)	GND CON 121.6 270.35	CLNC DEL 128.35 263.0	ASR/PAR
-----------------	---------------------------------	---	-------------------------	--------------------------	---------

Rwy 32 helicopter visibility reduction below 3/4 mile not authorized.



EMERG SAFE ALT 100 NM 3000



SC-4, 16 APR 2026 to 14 MAY 2026

SC-4, 16 APR 2026 to 14 MAY 2026

NEW ORLEANS, LOUISIANA

29°50'N - 90°02'W NEW ORLEANS NAS JRB (ALVIN CALLENDER FLD) (KNBG)

Amdt 5 10JUL25

RNAV (GPS) RWY 32