

NEW ORLEANS, LOUISIANA

VOR/DME or TACAN Z RWY 22

NEW ORLEANS NAS JRB
(ALVIN CALLENDER FLD) (KNBG)

VORTAC HRV 114.1 Chan 88	APCH CRS 237°	Rwy Idg TDZE Arpt Elev 10,000 0 2
--	-------------------------	---

[USN]

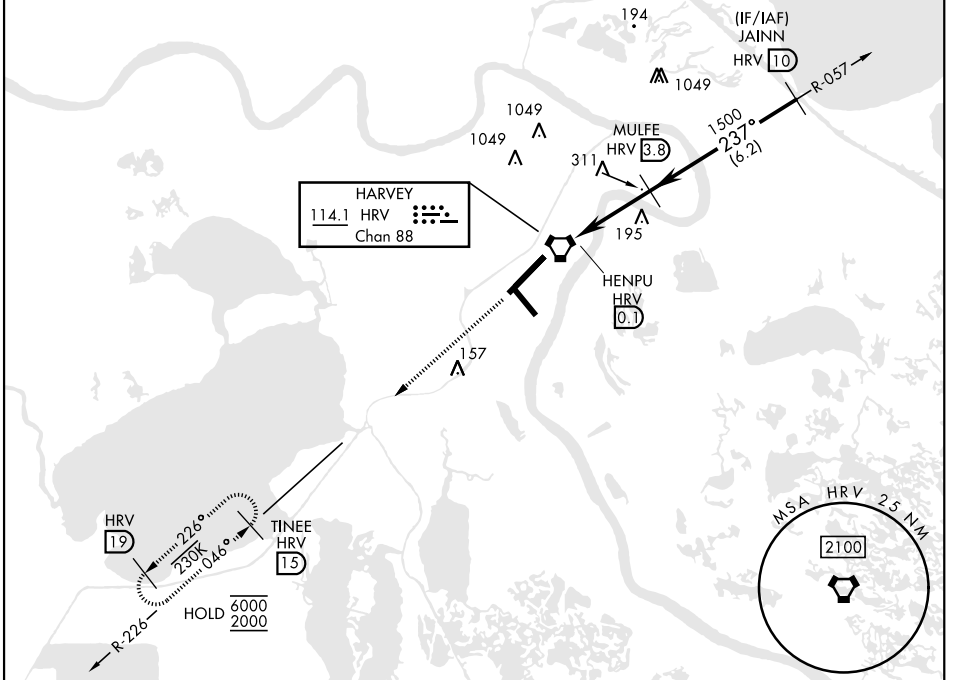
▼ * When ALS inop, increase CAT AB vis to 1 mile, CAT CD vis to 1½ miles.



MISSED APPROACH: Climb to 2000 on HVR R-226 to TINEE and hold.

ATIS★ 279.55	APP CON 123.85 256.9	NAVY NEW ORLEANS TOWER★ 123.8 340.2 (CTAF)	GND CON 121.6 270.35	ASR/ PAR
------------------------	--------------------------------	--	--------------------------------	-------------

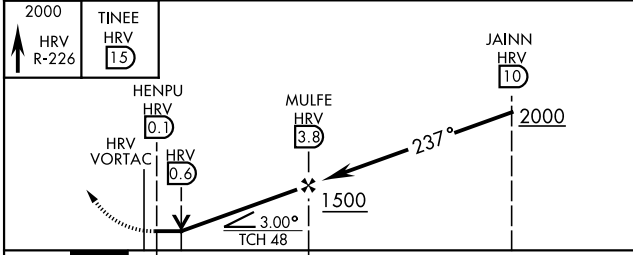
CAUTION: FAC is 602' from RCL at 3000' from threshold.



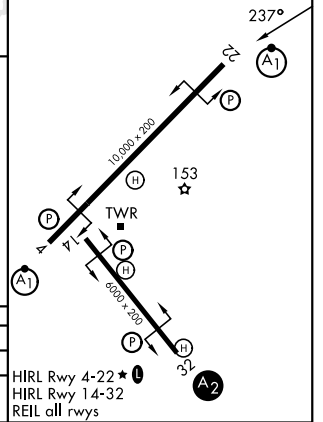
SC-4, 16 APR 2026 to 14 MAY 2026

SC-4, 16 APR 2026 to 14 MAY 2026

EMERG SAFE ALT 100 NM 3000



ELEV	2	TDZE	0
------	---	------	---



CATEGORY	A	B	C	D
S-22 *	480-5/8	480 (500-5/8)	480-1	480 (500-1)
CIRCLING	640-1	638 (700-1)	640-1 3/4 638 (700-1 3/4)	660-2 658 (700-2)

HIRL Rwy 4-22 ★
HIRL Rwy 14-32
REIL all rwy's

NEW ORLEANS, LOUISIANA

29° 50' N-90° 02' W

NEW ORLEANS NAS JRB (KNBG)
(ALVIN CALLENDER FLD)

Amtd 1 04SEP25

VOR/DME or TACAN Z RWY 22