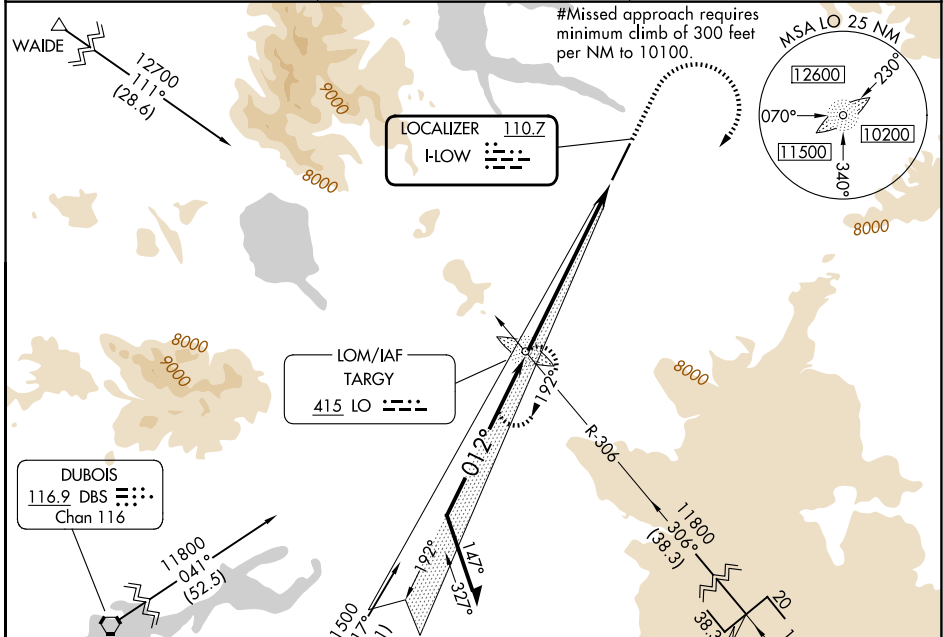


LOC I-LOW 110.7	APP CRS 012°	Rwy Ldg TDZE Apt Elev	8400 6649 6649
---------------------------	------------------------	-----------------------------	---

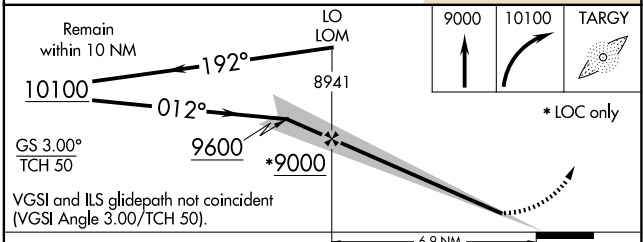
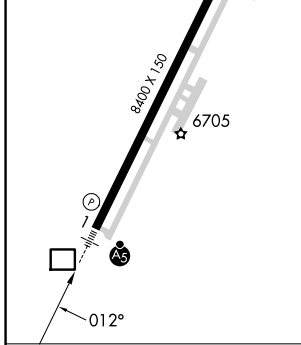
ILS or LOC RWY 1 YELLOWSTONE (WYS)

ADF required. DME required for MUPDE stepdown fix.	MALSR 	MISSED APPROACH: Climb to 9000, then climbing right turn to 10100 direct TARGY LOM and hold.
NA Obtain local altimeter setting on CTAF, when not received procedure NA. Inoperative table does not apply to S-LOC 1 Cat A. For inoperative MALSR, increase S-ILS 1 all Cats visibility to 2 3/4 mile.		

AWOS-3P 118.1	SALT LAKE CENTER 132.4 338.3	UNICOM 123.0 (CTAF)
-------------------------	--	-------------------------------



ELEV 6649	D	TDZE 6649
HIRL Rwy 1-19		
REIL Rwy 19		



CATEGORY	A	B	C	D
S-ILS 1#		6849-1/2	200 (200-1/2)	
S-ILS 1		7449-2 1/4	800 (800-2 1/4)	
S-LOC 1	7780-1 1/4 1131 (1200-1 1/4)	7780-1 1131 (1200-1)	7780-2 1/2 1131 (1200-2 1/2)	
CIRCLING	7780-1 1/4 1131 (1200-1 1/4)	7780-1 1/2 1131 (1200-1 1/2)	7780-3 1131 (1200-3)	8020-3 1371 (1400-3)

FAF to MAP 6.9 NM					
Knots	60	90	120	150	180
Min:Sec	6:54	4:36	3:27	2:46	2:18

NW-1, 16 APR 2026 to 14 MAY 2026

NW-1, 16 APR 2026 to 14 MAY 2026