

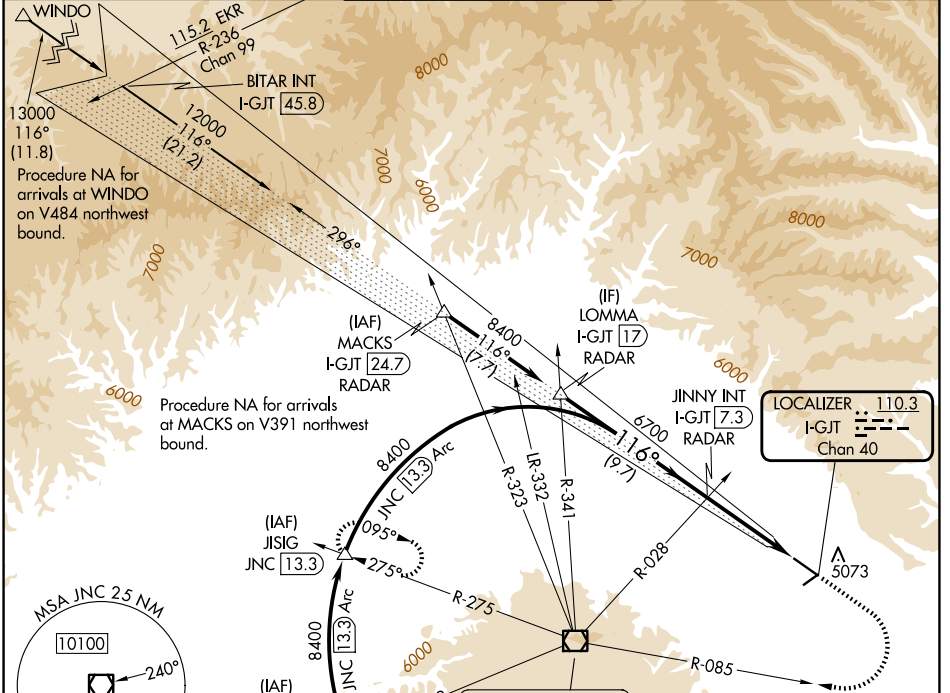
LOC/DME I-GJT <b>110.3</b> Chan 40	APP CRS <b>116°</b>	Rwy Ldg TDZE Apt Elev	<b>9339</b> <b>4840</b> <b>4861</b>
--	------------------------	-----------------------------	---

# ILS or LOC RWY 11

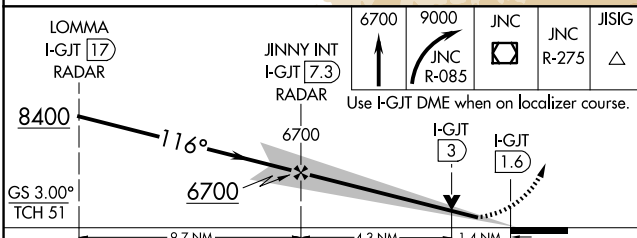
GRAND JUNCTION RGNL (GJT)

<p>Circling NA for Cat D north of Rwy 11-29. Inop table does not apply to S-ILS 11 all Cats.</p>	<p>MALSF</p>	<p>MISSED APPROACH: Climb to 6700 then climbing right turn to 9000 on JNC VOR/DME R-085 to JNC VOR/DME then on JNC VOR/DME R-275 to JISIG/JNC 13.3 DME and hold.</p>

ATIS <b>118.55</b>	DENVER APP CON * <b>119.7 317.4</b>	GRAND JUNCTION TOWER * <b>118.1 (CTAF) 0 257.8</b>	GND CON <b>121.7 257.8</b>	UNICOM <b>122.95</b>
-----------------------	--	---	-------------------------------	-------------------------

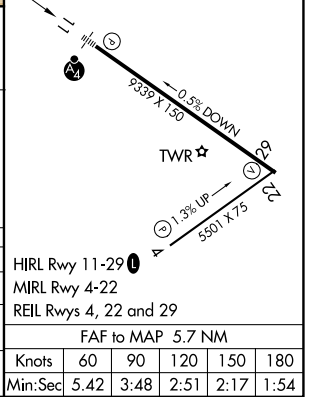


MSA JNC 25 NM	10100	11400
---------------	-------	-------



ELEV 4861	TDZE 4840
-----------	-----------

CATEGORY	A	B	C	D
S-ILS 11	5040/40 200 (200-¾)			
S-LOC 11	5340/40	500 (500-¾)	5340/60	500 (500-1¼)
CIRCLING	5380-1 519 (600-1)	5520-1 659 (700-1)	5840-3	979 (1000-3)



SW-1, 16 APR 2026 to 14 MAY 2026

SW-1, 16 APR 2026 to 14 MAY 2026

HIRL Rwy 11-29	60	90	120	150	180	
MIRL Rwy 4-22	5.42	3:48	2:51	2:17	1:54	
REIL Rwys 4, 22 and 29	FAF to MAP 5.7 NM					
	Knots	60	90	120	150	180
	Min:Sec	5.42	3:48	2:51	2:17	1:54