

# RNAV (GPS) Y RWY 11

GRAND JUNCTION RGNL (GJT)

WAAS CH <b>97514</b> <b>W11A</b>	APP CRS <b>116°</b>	Rwy Ldg TDZE Apt Elev	<b>9339</b> <b>4840</b> <b>4861</b>
--	------------------------	-----------------------------	---

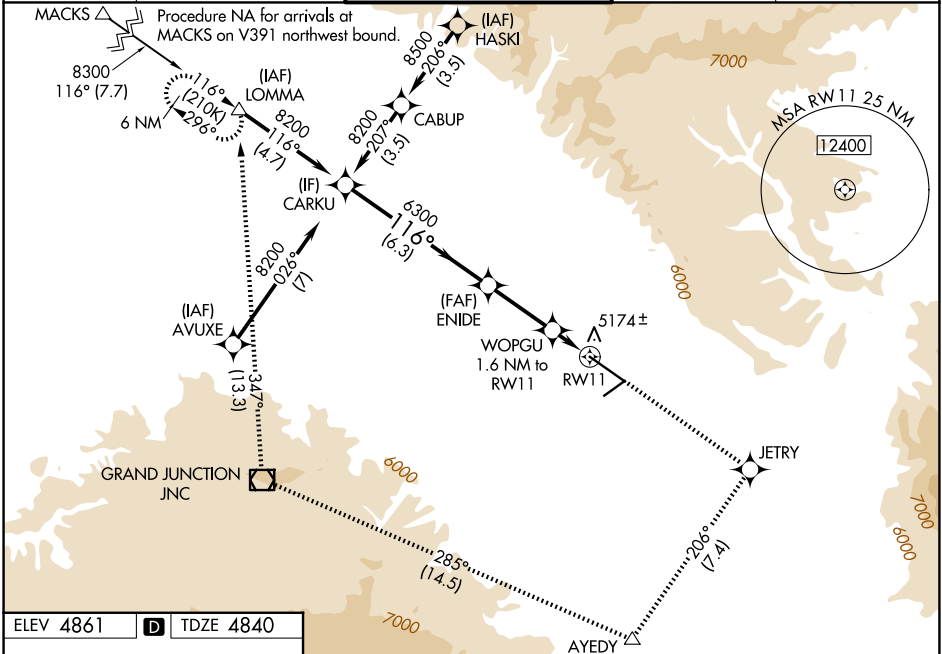
RNP APCH - GPS.

**⚠** Circling NA for Cat D north of Rwy 11-29. For uncompensated Baro-VNAV systems, LNAV/VNAV NA below -17°C or above 54°C. For inop ALS, increase LPV all Cats visibility to RVR 4500 and increase LNAV Cat C/D visibility to 1 $\frac{1}{2}$ . Inop table does not apply to LPV\*.

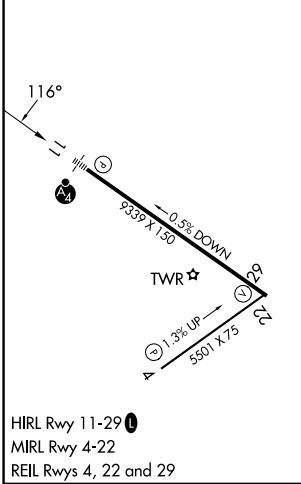
**MALSF**

**MISSED APPROACH:** Climb to 6700 direct JETRY then climbing right turn to 9000 on track 206° to AYEDY and track 285° to JNC VOR/DME and track 347° to LOMMA and hold.  
\*Missed approach requires minimum climb of 206 feet per NM to 7740.

ATIS <b>118.55</b>	DENVER APP CON * <b>119.7 317.4</b>	GRAND JUNCTION TOWER * <b>118.1 (CTAF) 257.8</b>	GND CON <b>121.7 257.8</b>	UNICOM <b>122.95</b>
-----------------------	--	---	-------------------------------	-------------------------



ELEV 4861	<b>D</b>	TDZE 4840
-----------	----------	-----------



	CARKU	6700	JETRY	9000	AYEDY	JNC	LOMMA
	↑	◆	⤵	△	tr 285°	□	tr 347°
	8200	6300	5400				
	116°	206°	285°				
	6.3 NM	2.8 NM	1.6 NM				
CATEGORY	A	B	C	D			
LPV DA*		5040/40	200 (200- $\frac{3}{4}$ )				
LPV DA		5120/40	280 (300- $\frac{3}{4}$ )				
LNAV/VNAV DA		5317/60	477 (500-1 $\frac{1}{4}$ )				
LNAV MDA*	5280/40	440 (500- $\frac{3}{4}$ )	5280/50	440 (500-1)			
LNAV MDA	5360/40	520 (500- $\frac{3}{4}$ )	5360-1 $\frac{1}{4}$	520 (500-1 $\frac{1}{4}$ )			
CIRCLING	5380-1 519 (600-1)	5520-1 659 (700-1)	5840-3	979 (1000-3)			

SW-1, 16 APR 2026 to 14 MAY 2026

SW-1, 16 APR 2026 to 14 MAY 2026