

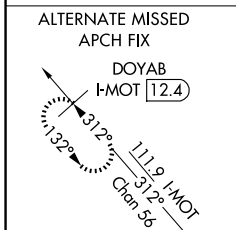
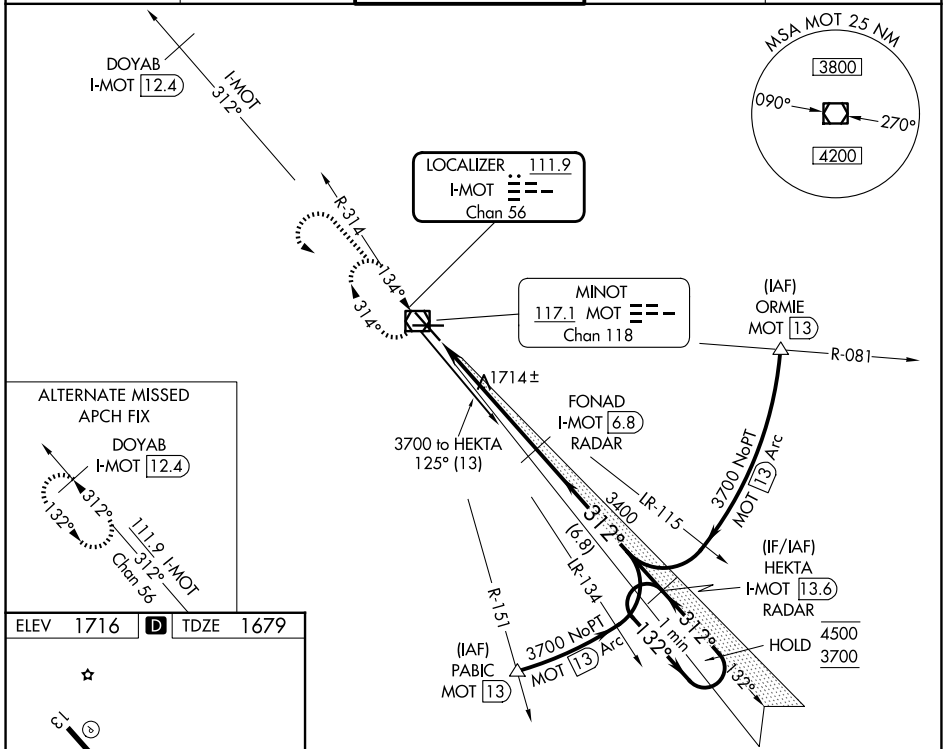
LOC/DME I-MOT 111.9 Chan 56	APP CRS 312°	Rwy Ldg TDZE Apt Elev	7700 1679 1716
---	------------------------	-----------------------------	---

ILS or LOC RWY 31

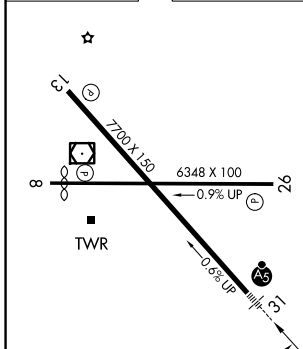
MINOT INTL (MOT)

DME or RADAR required.		MALSR	MISSED APPROACH: Climb to 3700 then left turn direct MOT VOR/DME and hold.
<p>▼ For Inop ALS, increase S-ILS 31 Cat E visibility to RVR 4000, and S-LOC 31 Cat C, D and E visibility to RVR 4500.</p> <p>▲ Autopilot coupled approach NA below 2500.</p>			

ASOS 118.725	MINOT APP CON * 119.6 363.8	MAGIC CITY TOWER * 118.2 (CTAF) 251.125	GND CON 121.9	UNICOM 122.95
------------------------	---------------------------------------	---	-------------------------	-------------------------



ELEV 1716	D	TDZE 1679
-----------	----------	-----------



3700	MOT	Use I-MOT DME when on the LOC course.		One Minute Holding Pattern	
*LOC only.	*I-MOT 2.5	FONAD I-MOT 6.8 RADAR	HEKTA I-MOT 13.6 RADAR	4500	3700
	I-MOT 1.6			132°	GS 3.00° TCH 49
	0.9	4.3 NM	6.8 NM		
CATEGORY	A	B	C	D	E
S-ILS 31	1879/24 200 (200-½)				
S-LOC 31	1980/24 301 (300-½)		1980/40 301 (300-¾)		
CIRCLING	2200-1 484 (500-1)	2240-1 524 (600-1)	2800-3 1084 (1100-3)		

NC-1, 16 APR 2026 to 14 MAY 2026

NC-1, 16 APR 2026 to 14 MAY 2026