

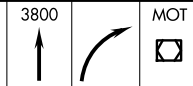
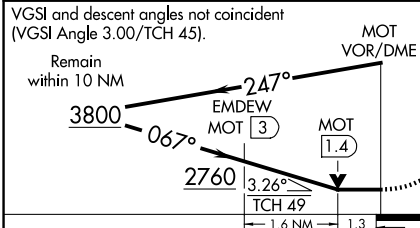
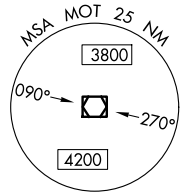
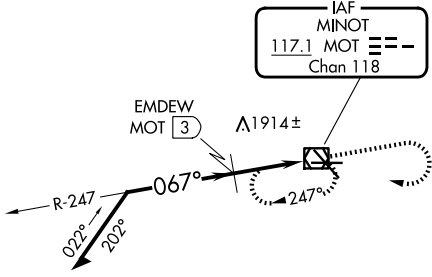
VOR/DME MOT <b>117.1</b> Chan <b>118</b>	APP CRS <b>067°</b>	Rwy Ldg TDZE <b>5955</b> <b>1712</b>	Apt Elev <b>1716</b>
--	------------------------	--	-------------------------

# VOR RWY 8

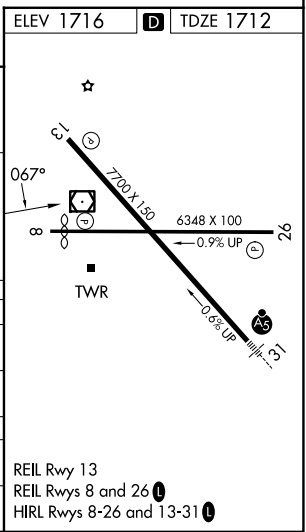
MINOT INTL (MOT)

**▼** Rwy 8 helicopter visibility reduction below ¾ NA. MISSED APPROACH: Climb to 3800 then right turn direct MOT VOR/DME and hold.

ASOS <b>118.725</b>	MINOT APP CON * <b>119.6 363.8</b>	MAGIC CITY TOWER * <b>118.2 (CTAF) 251.125</b>	GND CON <b>121.9</b>	UNICOM <b>122.95</b>
------------------------	---------------------------------------	---	-------------------------	-------------------------



CATEGORY	A	B	C	D
S-8	2760-1¼ 1048 (1100-1¼)	2760-1½ 1048 (1100-1½)	2760-3	1048 (1100-3)
CIRCLING	2760-1¼ 1044 (1100-1¼)	2760-1½ 1044 (1100-1½)	2800-3	1084 (1100-3)
EMDEW FIX MINIMUMS				
S-8	2180-1	468 (500-1)	2180-1⅜ 468 (500-1⅜)	2180-1½ 468 (500-1½)
CIRCLING	2200-1 484 (500-1)	2240-1 524 (600-1)	2800-3	1084 (1100-3)



REIL Rwy 13  
REIL Rws 8 and 26  
HIRL Rws 8-26 and 13-31

NC-1, 16 APR 2026 to 14 MAY 2026

NC-1, 16 APR 2026 to 14 MAY 2026