

WAAS CH 99732 W10A	APP CRS 101°	Rwy Ldg 8005 TDZE 38 Apt Elev 40
--	------------------------	---

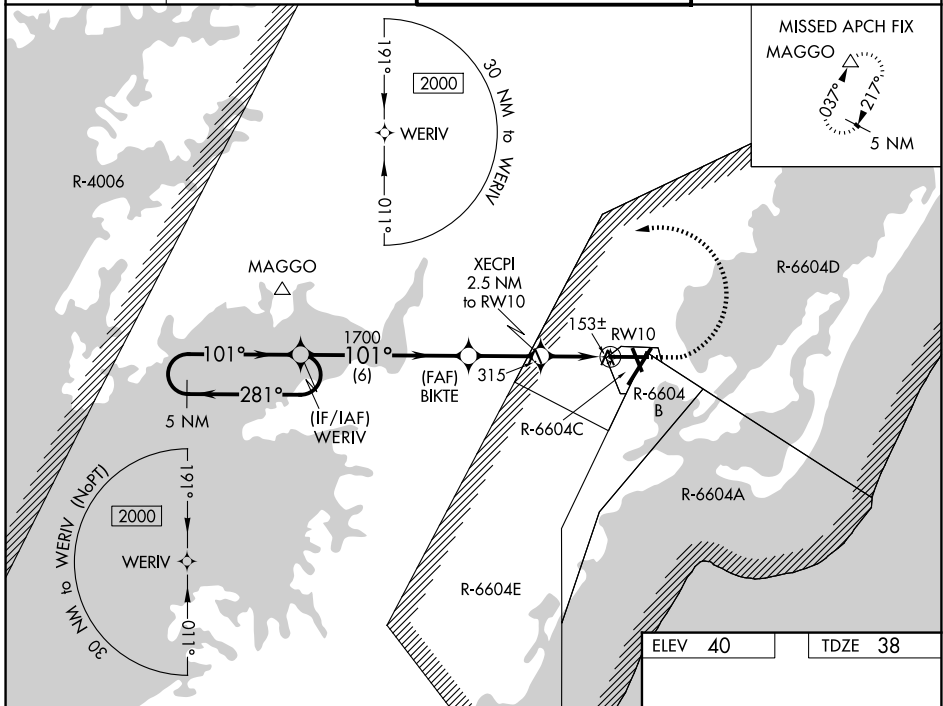
RNAV (GPS) RWY 10

WALLOPS FLIGHT FACILITY (WAL)

⚠ DME/DME RNP -0.3 NA. Rwy 10 helicopter visibility reduction below 3/4 SM NA. When local altimeter setting not received, use Salisbury altimeter setting and increase all DA 60 feet and all visibilities 1/4 SM. Increase all MDA 60 feet and all Cat C and D visibilities 1/4 SM. Baro-VNAV and VDP NA when using Salisbury altimeter setting. For uncompensated Baro-VNAV systems, LNAV/VNAV NA below -11°C (13°F) or above 54°C (130°F).

MISSED APPROACH: Climb to 700 then climbing left turn to 2000 direct MAGGO and hold.

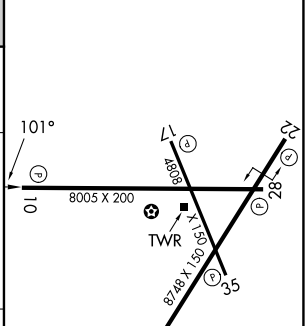
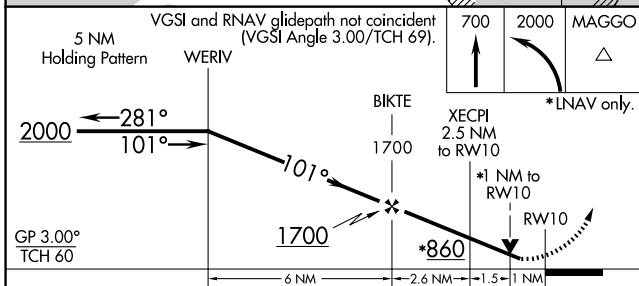
ASOS 119.175	PATUXENT APP CON★ 127.95 314.0	WALLOPS TOWER★ 126.5 (CTAF) 306.975 (CTAF)	GND CON 127.875 269.325
------------------------	--	--	-----------------------------------



NE-3, 16 APR 2026 to 14 MAY 2026

NE-3, 16 APR 2026 to 14 MAY 2026

ELEV 40	TDZE 38
----------------	----------------



CATEGORY	A	B	C	D
LPV DA		330-1	292 (300-1)	
LNAV/VNAV DA		443-1 1/4	405 (500-1 1/4)	
LNAV MDA	420-1	382 (400-1)	420-1 1/8	382 (400-1 1/8)
CIRCLING	600-1	560 (600-1)	620-1 1/2 580 (600-1 1/2)	860-2 3/4 820 (900-2 3/4)

REIL all Rwys
HIRL Rws 4-22, 10-28 and 17-35