

TACAN SBY Chan 49 (111.2)	APP CRS SBY (24.1) Arc	Rwy Ldg 8005 TDZE 38 Apt Elev 40
---	----------------------------------	---

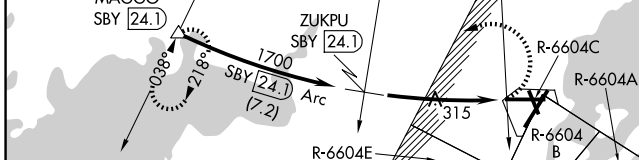
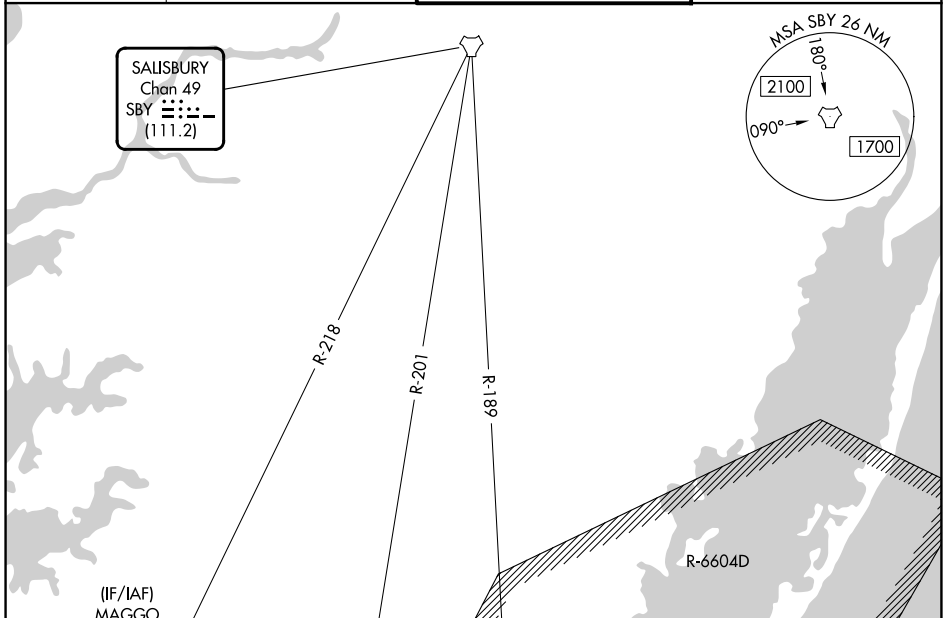
TACAN RWY 10

WALLOPS FLIGHT FACILITY (WAL)

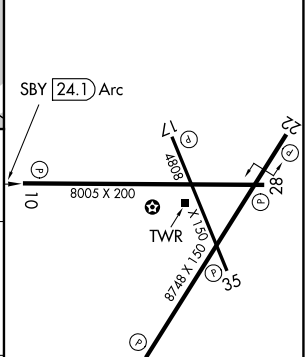
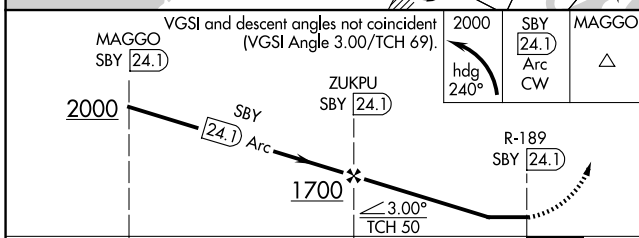
⚠ Helicopter visibility reduction below 3/4 SM NA. When local altimeter setting not received, use SBY altimeter setting and increase all MDA 60 feet; increase S-10 Cat A visibility 1/4 SM, and Circling Cats C and D visibility 1/4 SM. Procedure NA when R-6604 active.

⚠ MISSED APPROACH: Climbing left turn to 2000 on heading 240° and SBY TACAN 24.1 DME Arc clockwise to MAGGO/SBY 24.1 DME and hold.

ASOS 119.175	PATXENT APP CON★ 127.95 314.0	WALLOPS TOWER★ 126.5 (CTAF) 306.975 (CTAF)	GND CON 127.875 269.325
------------------------	---	--	-----------------------------------



ELEV 40	TDZE 38
---------	---------



CATEGORY	A	B	C	D
S-10	900-1¼	862 (900-1¼)	900-2½	862 (900-2½)
CIRCLING	900-1¼	860 (900-1¼)	900-2½ 860 (900-2½)	900-2¾ 860 (900-2¾)

REIL all Rwys
HIRL Rwy's 4-22, 10-28 and 17-35

NE-3, 16 APR 2026 to 14 MAY 2026

NE-3, 16 APR 2026 to 14 MAY 2026