

LOC I-FFV	APP CRS	Rwy Ldg	7540
111.3	139°	TDZE	23
		Apt Elev	30

ILS or LOC RWY 14

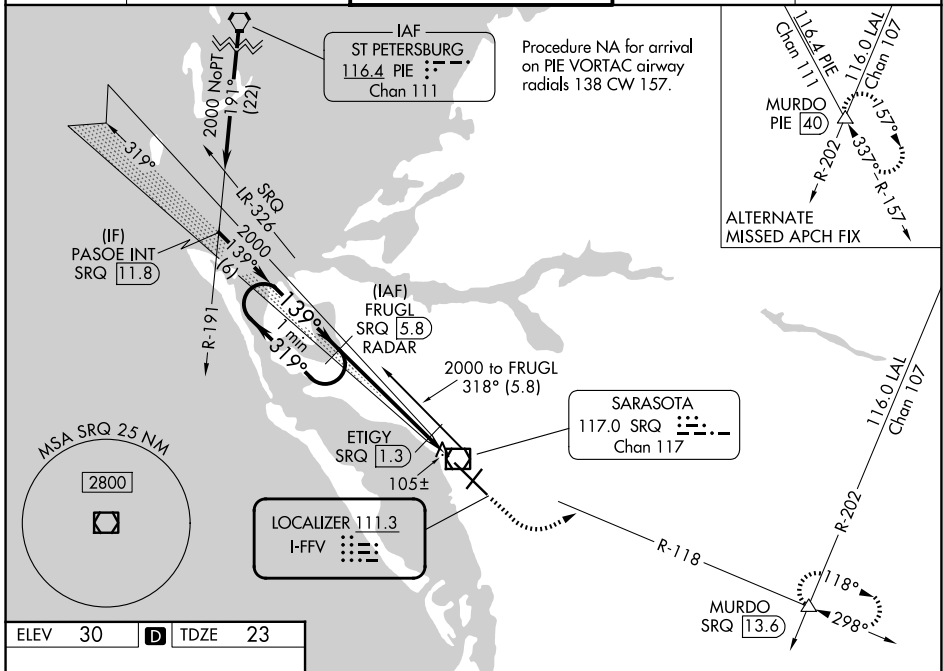
SARASOTA/BRADENTON INTL (SRQ)

DME or RADAR required for LOC only.

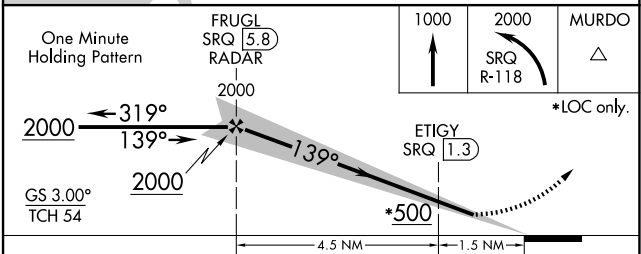
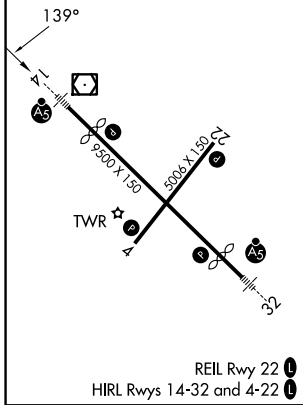
When control tower closed, S-ILS 14 Minimums NA; increase S-LOC 14 Cats A and B and ETIGY Fix Minimums S-LOC 14 all Cats visibility to 1 mile. When control tower closed, inop table does not apply to S-LOC 14 Cats A and B and ETIGY Fix Minimums S-LOC 14 all Cats.

MALSR	MISSED APPROACH: Climb to 1000 then climbing left turn to 2000 on SRQ VOR/DME R-118 to MURDO INT/SRQ 13.6 DME and hold.

ATIS	TAMPA APP CON	SARASOTA TOWER ★	GND CON	UNICOM
124.375	119.65 353.575	120.1(CTAF) 256.8	121.9 273.6	122.95



ELEV 30	D	TDZE 23
---------	----------	---------



CATEGORY	A	B	C	D
S-ILS 14	223-1/2 200 (200-1/2)			
S-LOC 14	500-1/2	477 (500-1/2)	500-1	477 (500-1)
CIRCLING	500-1	470 (500-1)	600-1 1/2	600-2
ETIGY FIX MINIMUMS				
S-LOC 14	360-1/2 337 (400-1/2)			
CIRCLING	500-1	470 (500-1)	600-1 1/2	600-2
			570 (600-1 1/2)	570 (600-2)

FAF to MAP 6 NM					
Knots	60	90	120	150	180
Min:Sec	6:00	4:00	3:00	2:24	2:00

SARASOTA/BRADENTON, FLORIDA
Amdt 6D 04NOV21

27°24'N-82°33'W

SARASOTA/BRADENTON INTL (SRQ)
ILS or LOC RWY 14

SE-3, 16 APR 2026 to 14 MAY 2026

SE-3, 16 APR 2026 to 14 MAY 2026