

LOC I-SRQ <b>109.7</b>	APP CRS <b>319°</b>	Rwy Ldg TDZE Apt Elev	<b>7510</b> <b>27</b> <b>30</b>
---------------------------	------------------------	-----------------------------	---------------------------------------

# ILS or LOC RWY 32

SARASOTA/BRADENTON INTL (SRQ)

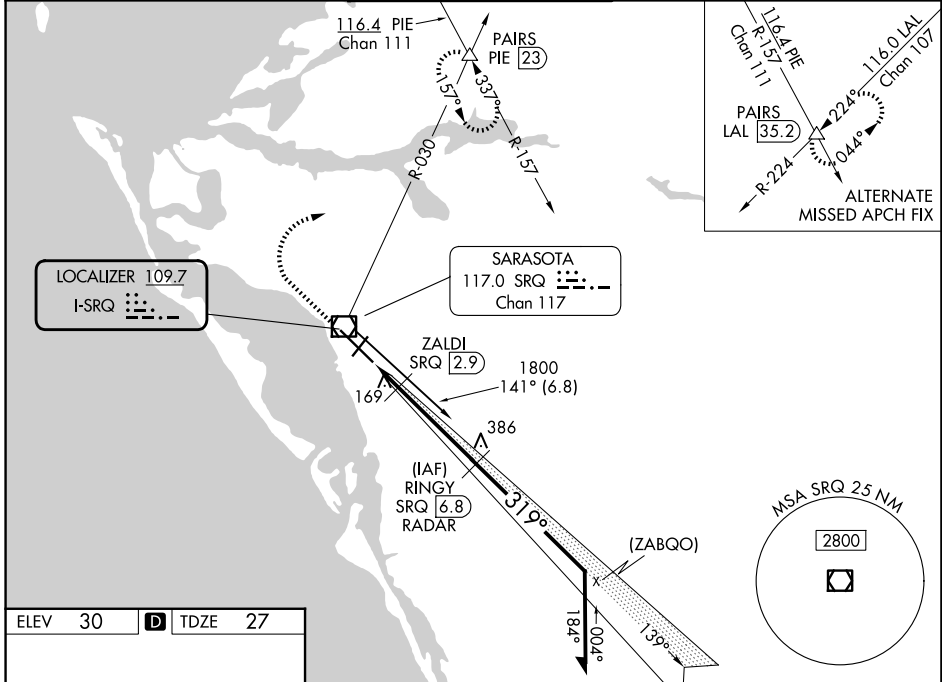
**DME or RADAR required.**

**Autopilot coupled approach NA below 840. When control tower closed, S-ILS 32 Minimums NA, increase S-LOC 32 and ZALDI Fix Minimums S-LOC 32 all Cats visibility to 1. When control tower closed, inop table does not apply to S-LOC 32 and ZALDI Fix Minimums all Cats.**

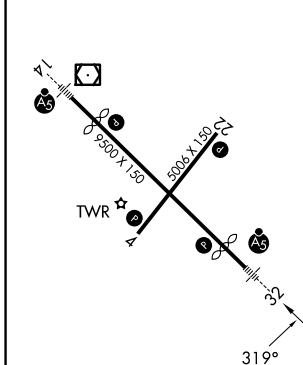
**MALSR**  
AS

**MISSED APPROACH:** Climb to 1000 then climbing right turn to 3000 on heading 065° and SRQ VOR/DME R-030 to PAIRS INT/PIE VORTAC 23 DME and hold, continue climb-in-hold to 3000.

ATIS <b>124.375</b>	TAMPA APP CON <b>119.65 353.575</b>	SARASOTA TOWER ★ <b>120.1(CTAF) 256.8</b>	GND CON <b>121.9 273.6</b>	UNICOM <b>122.95</b>
------------------------	--	--	-------------------------------	-------------------------



ELEV 30	<b>D</b>	TDZE 27
---------	----------	---------

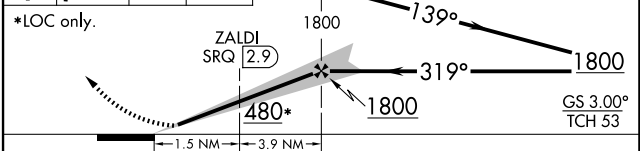


REIL Rwy 22  
HIRL Rwys 14-32 and 4-22

FAF to MAP 5.4 NM

Knots	60	90	120	150	180
Min:Sec	5:24	3:36	2:42	2:10	1:48

1000	3000	SRQ R-030	PAIRS	RINGY SRQ 6.8 RADAR	Remain within 10 NM
------	------	-----------	-------	---------------------	---------------------



CATEGORY	A	B	C	D
S-ILS 32	227-½ 200 (200-½)			
S-LOC 32	480-½	453 (500-½)	480-⅞	453 (500-⅞)
CIRCLING	500-1	470 (500-1)	600-1½ 570 (600-1½)	600-2 570 (600-2)
ZALDI FIX MINIMUMS				
S-LOC 32	360-½ 333 (400-½)			
CIRCLING	500-1	470 (500-1)	600-1½ 570 (600-1½)	600-2 570 (600-2)

SE-3, 16 APR 2026 to 14 MAY 2026

SE-3, 16 APR 2026 to 14 MAY 2026