

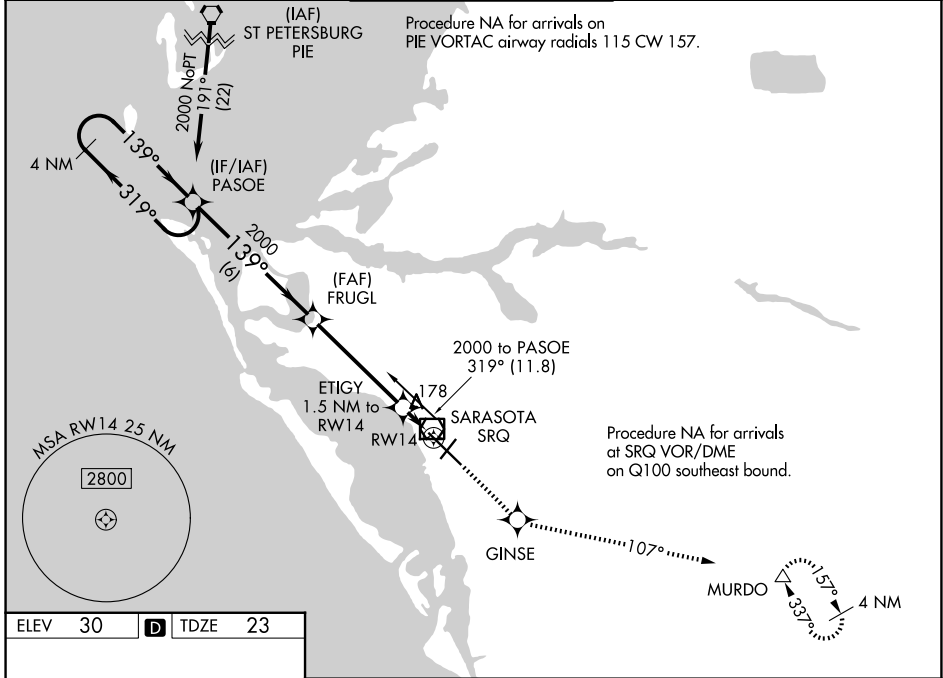
WAAS CH 86705 W 14A	APP CRS 139°	Rwy Ldg 7540 TDZE 23 Apt Elev 30
---	------------------------	---

RNAV (GPS) RWY 14

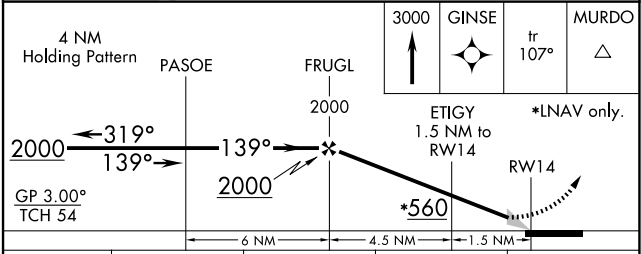
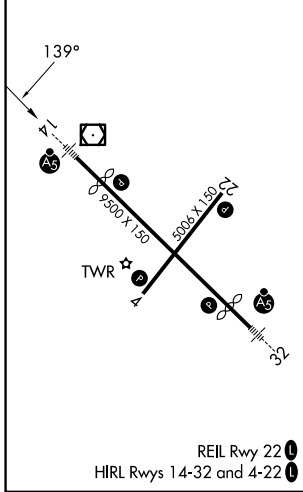
SARASOTA/BRADENTON INTL (SRQ)

RNP APCH. ▼ For uncompensated Baro-VNAV systems, LNAV/VNAV NA below -15°C or above 43°C. When control tower closed, LPV and LNAV/VNAV NA; increase LNAV all Cats visibility to 1 mile. When control tower closed, inop table does not apply to LNAV Cats A and B. When control tower closed, for inop MALSR, increase LNAV Cats C and D visibility to 1½ mile.		MALSR 	MISSED APPROACH: Climb to 3000 direct GINSE and on track 107° to MURDO and hold.
---	--	-----------	--

ATIS 124.375	TAMPA APP CON 119.65 353.575	SARASOTA TOWER ★ 120.1 (CTAF) 256.8	GND CON 121.9 273.6	UNICOM 122.95
------------------------	--	---	-------------------------------	-------------------------



ELEV 30	D	TDZE 23
---------	----------	---------



CATEGORY	A	B	C	D
LPV DA	223-½		200 (200-½)	
LNAV/VNAV DA	489-1⅛		466 (500-1⅛)	
LNAV MDA	440-½	417 (500-½)	440-¾	417 (500-¾)
CIRCLING	500-1	470 (500-1)	600-1½ 570 (600-1½)	600-2 570 (600-2)

SE-3, 16 APR 2026 to 14 MAY 2026

SE-3, 16 APR 2026 to 14 MAY 2026