

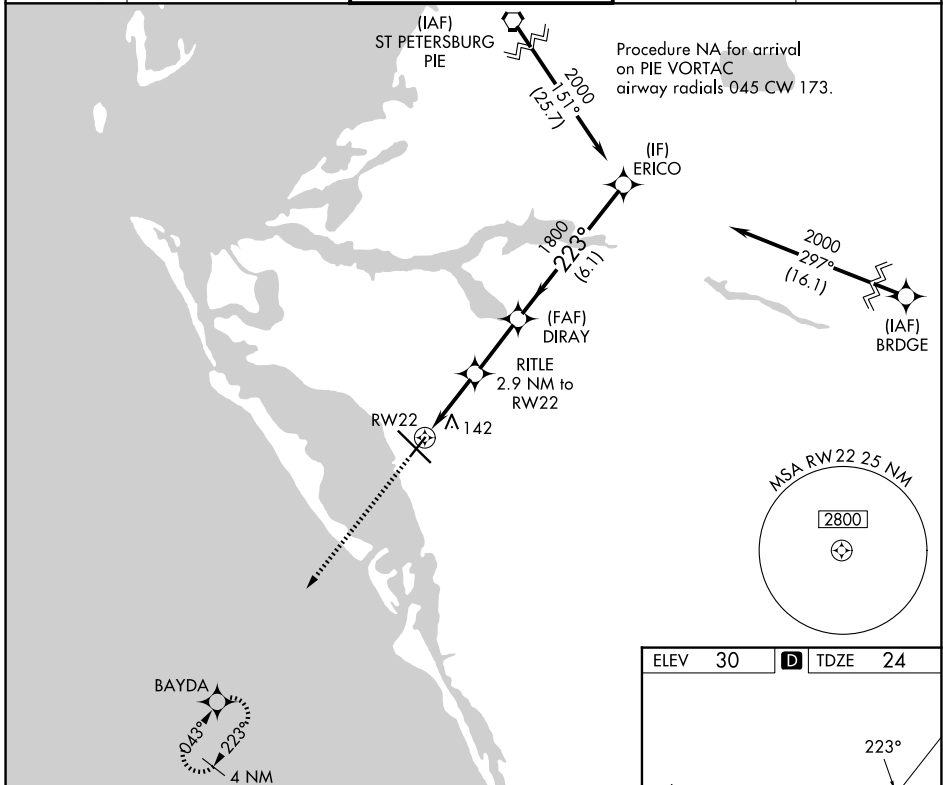
APP CRS	Rwy Ldg	<b>5006</b>
<b>223°</b>	TDZE	<b>24</b>
	Apt Elev	<b>30</b>

# RNAV (GPS) RWY 22

SARASOTA/BRADENTON INTL (SRQ)

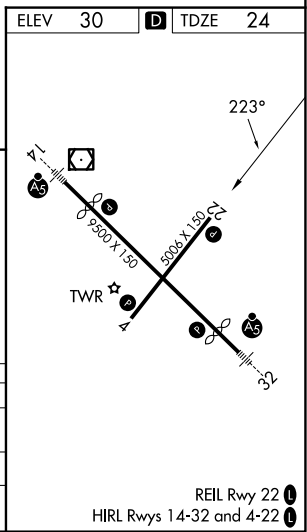
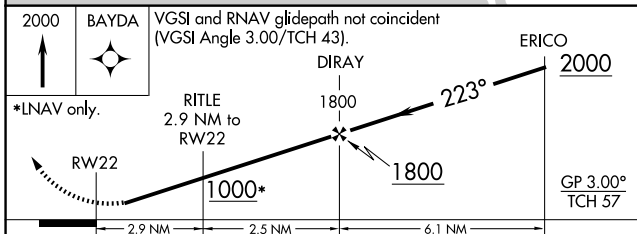
RNP APCH.		MISSED APPROACH: Climb to 2000 direct BAYDA and hold.		
<p><b>▼</b> Rwy 22 helicopter visibility reduction below 1 SM NA. For uncompensated Baro-VNAV systems, LNAV/VNAV NA below -1.5°C or above 43°C.</p>				

ATIS <b>124.375</b>	TAMPA APP CON <b>119.65 353.575</b>	SARASOTA TOWER ★ <b>120.1(CTAF) 256.8</b>	GND CON <b>121.9 273.6</b>	UNICOM <b>122.95</b>
------------------------	--	--	-------------------------------	-------------------------



SE-3, 16 APR 2026 to 14 MAY 2026

SE-3, 16 APR 2026 to 14 MAY 2026



CATEGORY	A	B	C	D
LNAV/VNAV DA	303-1 279 (300-1)			
LNAV MDA	400-1 376 (400-1)			
CIRCLING	500-1 470 (500-1)	600-1½ 570 (600-1½)		600-2 570 (600-2)